

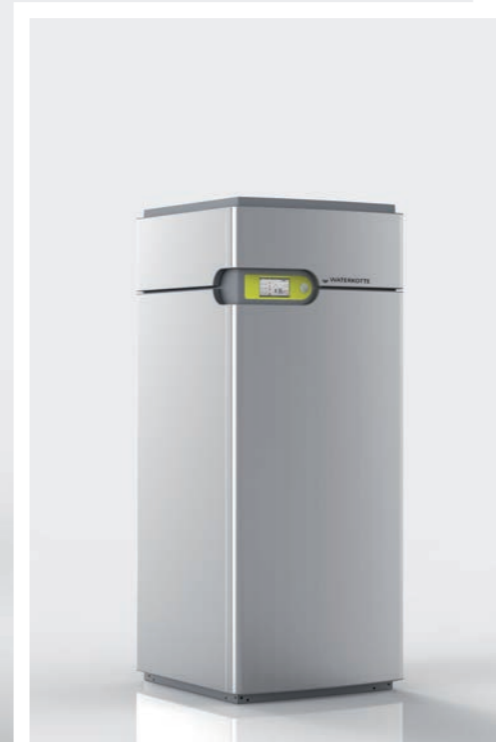
Efficiency at its best

High-end heat pumps | EcoTouch 5029 Ai



EcoTouch 5029 Ai | Power range from 5 – 29 kW

up to
COP 5.1



A+++ : Space heating energy efficiency class of the package (with WWPR II controller) at W10/W55. Discrepancies within the model series possible.

High performance with minimal noise emission

The EcoTouch 5029 Ai series with a performance spectrum from 5 to 29 kW is suitable for use in buildings with higher heating demand. At COP values up to 5.1 the compact heat pump is as quiet as a refrigerator.

Completely high-end

The EcoTouch 5029 Ai not only impresses with its efficiency, but also by its modern design. The innovative control software EasyCon also allows an intuitive and convenient control.

Space-saving compact heating center

By connecting a water tank from the EcoStock series the EcoTouch 5029 Ai becomes a complete heating system. The footprint of less than 0.38 m² is ideal for a space-saving installation.

Climate control on demand

The EcoTouch 5029 Ai is available in the versions NC for natural cooling with system separation and RC for climate cooling with reversing circuit. Based on your climate-control need the suitable model can be selected.

Features

- Heat pump for higher capacity
- 4.3 inch colour touch-display
- Integrated web interface for App-control
- Intuitive control software EasyCon
- Central power switch
- Sensor system with numerous sensors
- COP counter and display of all operating data
- Domestic hot water heating available optionally
- Integrated electrical heating element 6 kW
- Chlorine-free refrigerant R410A without ozone depletion
- Speed-controlled circulation pumps of efficiency class A
- Integrated vibration damper Silenter®
- Easy to service unit design
- Connections installed on rear
- Unit dimensions: (W x H x D) 600 x 1470 x 633 mm

Optional features

- Connection set
- Natural cooling (NC) and reversing circuit (RC)
- Starting current damping (400 V)
- Controller extension for:
 - Second heating circuit e.g. for swimming pool heating
 - Use of thermal solar energy
 - 2 additional mixer circuits

Highlights

- Low operating costs due to COP values up to 5.1
- Low noise emission of 44 dB (A)
- Power reserves can be used efficiently
- Touch-display with innovative EasyCon software
- Smartphone control via EasyCon Mobile
- Fully integrated into the Internet
- Indication of current COP value
- Housing in high gloss white
- Optimized footprint 0.38 m²

EasyCon Software | The new type of control



Touch symbols in colour

As the name suggests, EasyCon makes the operation of your heat pump even easier. The software uses simple, self-explanatory symbols like on a Smartphone. The symbols on the colour touch display of the EcoTouch units require only a light touch.

This is as easy as it gets

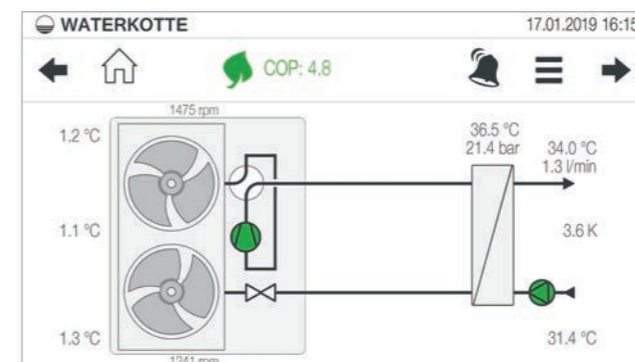
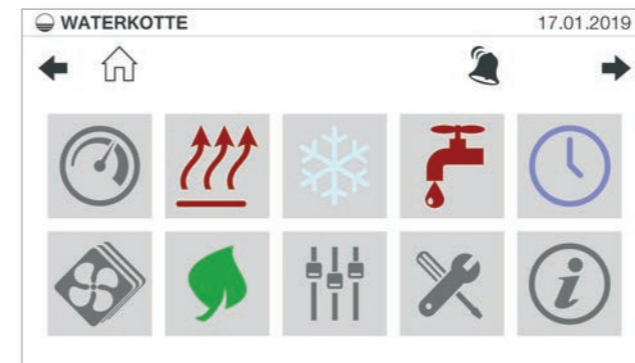
The symbols, also referred to as icons, are self-explanatory. You therefore always have quick access to all important functions of the unit. Setting the desired temperature or timer program is child's play. Operating a heating system without the operating manual has never been easier.

Comprehensive data evaluation

On the large colour display you can evaluate a variety of data. The actual consumption data, performance data and operating states are clearly displayed in graphics. This is made possible by the data acquisition by the sensor system and the mathematical analysis by EasyCon.

Fully integrated into the Internet

The particularly advanced feature of EasyCon, in addition to the modern user Interface, is its easy integration into the network. As a standard, all heat pumps in the EcoTouch series are connected to the network via the touchscreen. The free app EasyCon Mobile allows you to control your heat pump even while you are on the move.



Features of the control unit

- Touch Display, 4.3"
- Icon orientated user interface that makes it easy to use, configure and monitor
- Control via Smartphone app
- USB Port integrated as standard to permit upgrades and uploading of logged data
- Network Ethernet Port for remote access

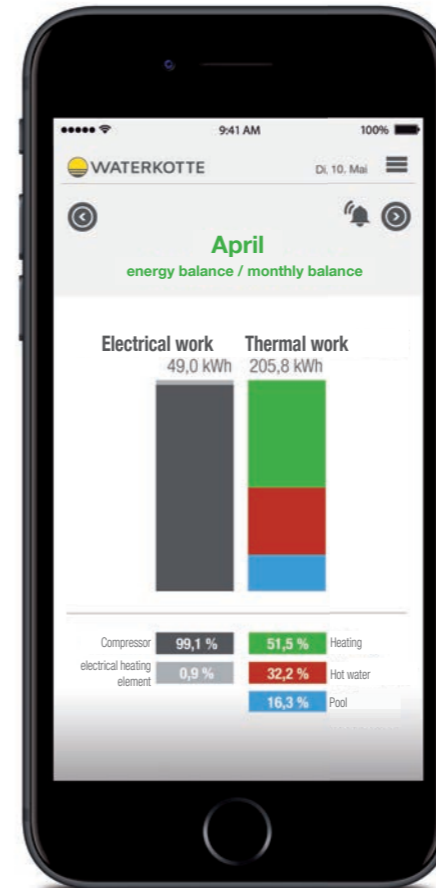
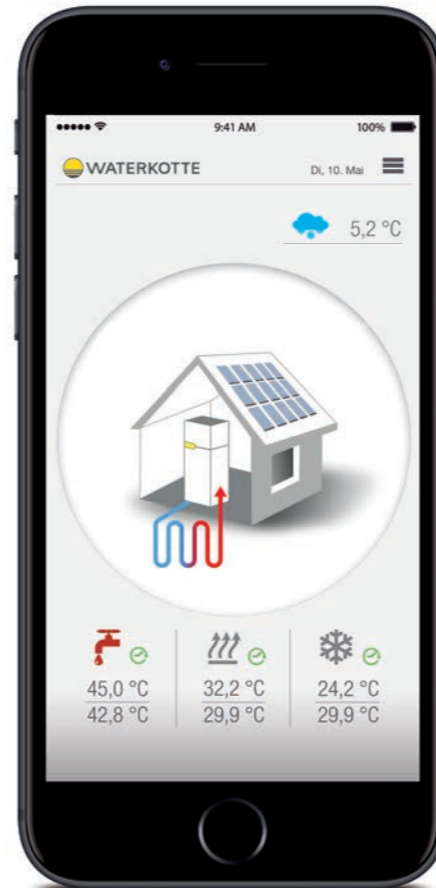
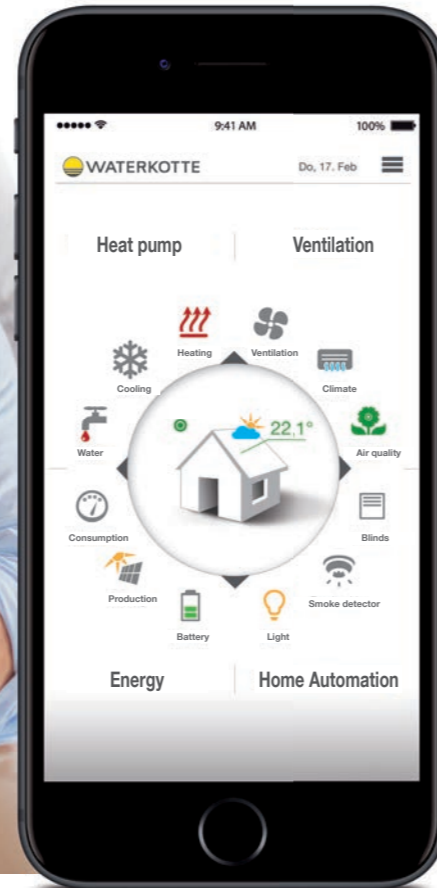
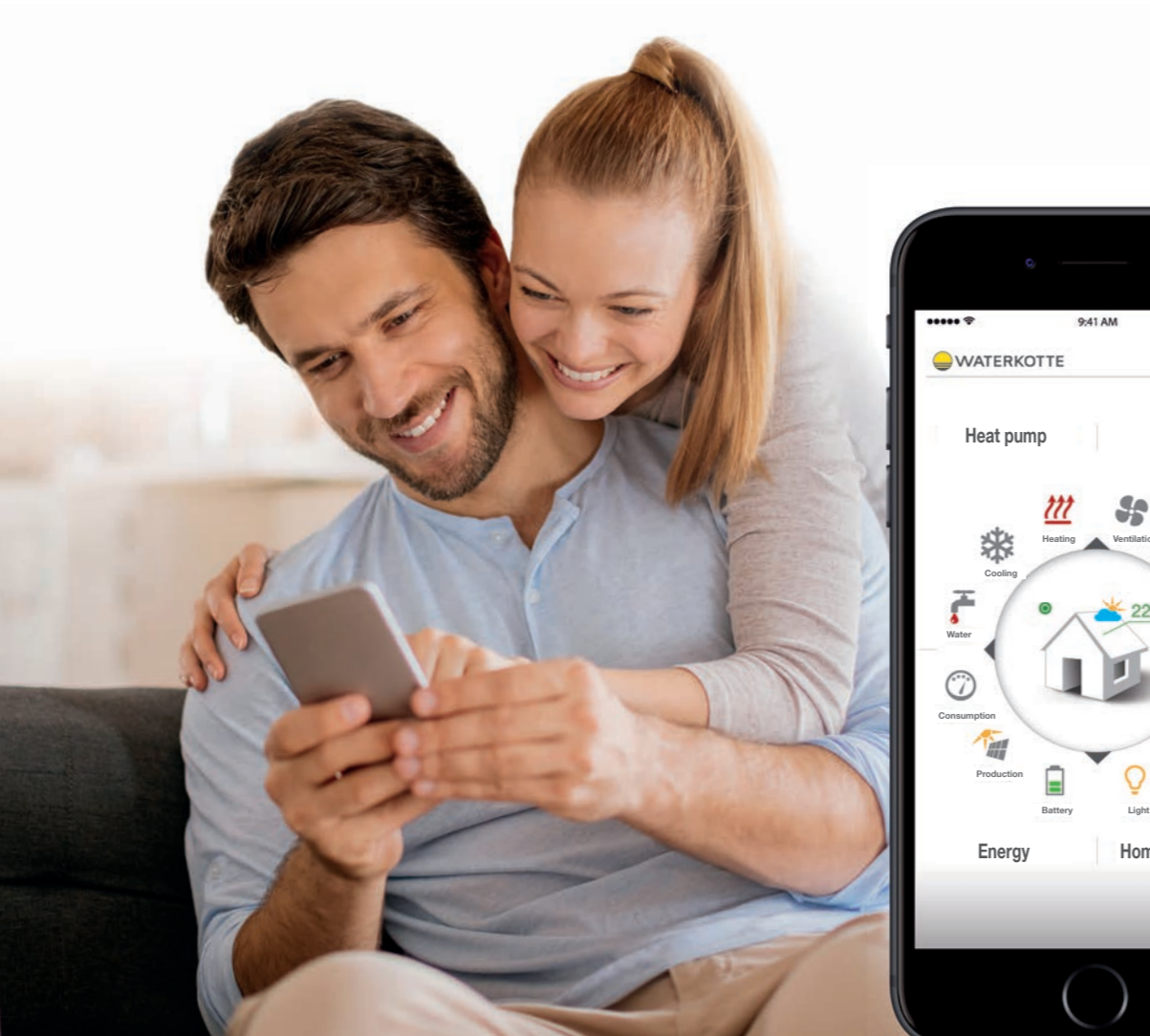
Software

- Modern Control technology
- Efficient automation of heating and cooling
- Additional Control Functions included as standard:
 - Integration of Solar Thermal
 - Integration of Photovoltaics (PV)
 - Second Heating Circuit
 - Three additional Weather Compensated (Mixing Circuits)
- Energy Monitoring included as standard
- Advanced Bivalent control possibilities
- Remote Control via EasyCon mobile app
- Automatic Screen Saver

Easy to use

- Intuitive EasyCon touch control interface
- System state clear to see
- Touch shortcuts to main system functions
- Dynamic display of refrigerant circuit
- Automatic email failure messages
- Graphical display of temperatures (current and historic)
- Continuous display of energy performance (SPF / COP)
- Individual timer program and vacation mode
- Internet Connection and Web interface included as standard

EasyCon | Mobile App Control



Features

- Control and monitoring software for heat pumps living area ventilation, energy storage and homeautomation
- Multilingual full version
- Intuitive menu structure
- Available as Apple and Android app
- Can be installed on smartphones and tablet PCs
- Expandable, e.g. for living area ventilation

Technical Requirements

- Available LAN network
- Existing Internet access via provider
- Router with a spare RJ45 connection
- WATERKOTTE EcoTouch products
- WATERKOTTE RemoteBox / SmartBox

Highlights

- Free control software
- Continuous system overview
- Comprehensive display of measured data
- Active system messages from the heat pump

Quick and convenient via Internet

With the EasyCon App for mobile control you can access to your WATERKOTTE products by smartphone or tablet. This is made possible by an Internet connection that you can establish with your heat pump via the application and a web interface.

Free of charge and easy to install

EasyCon Mobile is available free of charge as an App- and Android- app for your Smartphone or your tablet computer. Simply download from Internet and install. Then enter your heat pump ID, and you are connected.

Mobile control of your heat pump


The menu structure of the application for mobile control is like the control software that is installed on your heat pump. This allows immediate and intuitive navigation. With the software you are able to send mobile control commands, or check data evaluations.

More ease of use and less costs

The EasyCon applications make the mobile control of your WATERKOTTE products possible. This results in real ease of use. By mobile control you can already turn up the heat from the sofa. Saving costs has never been so much fun.



Technical data | EcoTouch 5029 Ai

EcoTouch 5029 Ai mit R410A		5007.5Ai	5008.5Ai	5010.5Ai	5014.5Ai	5018.5Ai	5023.5Ai	5029.5Ai		
Heat source groundwater¹⁾										
Power cons./output W10/W35	kW	1.1/6.8	1.3/7.9	1.6/10.4	2.1/14.0	2.7/17.8	3.8/23.5	4.8/29.1		
Coefficient of performance (COP) at W10/W35		6.6	6.6	6.9	6.4	6.7	5.9	5.5		
Space heating energy efficiency class ²⁾		A+++	A+++	A+++	A+++	A+++	A+++	A+++		
Space heating energy efficiency class of the package ²⁾		A+++	A+++	A+++	A+++	A+++	A+++	A+++		
Groundwater flow rate	m ³ /h (ΔT=3K)	1.6	1.9	2.6	3.5	4.4	5.7	7.1		
Groundwater flow rate, minimum	m ³ /h ³⁾ (ΔT=6K)	0.9	1.0	1.4	1.8	2.3	3.0	3.7		
Heating water flow rate	m ³ /h (ΔT=5K)	1.2	1.4	1.8	2.5	3.1	4.1	5.1		
Operating limit					W10/W65					
Ground source heating										
Power cons./output B0/W35	kW	1.1/5.0	1.3/5.9	1.6/7.7	2.1/10.4	2.7/13.2	3.7/17.5	4,6/21.6		
Coefficient of performance (COP) at B0/W35		4.7	4.8	5.0	5.1	5.0	4.8	4.5		
Space heating energy efficiency class ²⁾		A++	A++	A++	A++	A++	A++	A++		
Space heating energy efficiency class of the package ²⁾		A++	A++	A++	A++	A++	A++	A++		
Heat source flow rate ⁴⁾	m ³ /h (ΔT=3K)	1.2	1.4	1.9	2.6	3.3	4.3	5.4		
Heating water flow rate	m ³ /h (ΔT=5K)	0.9	1.0	1.3	1.8	2.3	3.1	3.8		
Max. power consumption (pump heat source)	W	75	75	75	75	130	130	130		
Max. power consumption (pump heating)	W	75	75	75	75	130	130	130		
Operating limit					B-5/W60 B0/W63					
Compressor					Fully hermetic scroll					
Sound power at B0/W55	dB(A)	44	44	45	46	46	47	47		
Electrical data										
Electrical Energy Supply	V, AC, Hz	3, 400, 50 (1, 230, 50)								
Starting current (unreduced)	A	28 (52)	28 (60)	43 (83)	51,5 (108)	62 (130)	75	102		
Starting current soft start	A	14 (45)	14 (45)	22 (45)	26 (45)	31 (45)	38	51		
Max. operating current.	A	4.8 (10.5)	4.8 (12.8)	6,2 (17.1)	7.4 (22.8)	9.7 (27.9)	13	15.3		
Main fuse, compressor (provided by customer)	A	C16A (C16A)	C16A (C16A)	C16A (C20A)	C16A (C25A)	C16A (C32A)	C 16 A	C 20 A		
Control fuse (provided by customer)	A	B 10 A	B 10 A	B 10 A	B 10 A	B 10 A	B 10 A	B 10 A		
Electrical heating element	kW	6								
Filling capacities, dimensions, weights, connections										
Unit weight ⁵⁾	kg	194	194	208	208	219	225	225		
Connections: Heat source / use		Flat-sealing G 1 ¼" a / G 1 ¼" a								
Dimensions W x H x D	mm	600 x 1470 x 633								
Subject to technical change. Tolerances as per EN 12900, EN 14511 and EN 12102 apply to the performance data listed above.										
¹⁾ Groundwater source heating is to be used with intermediate circuit; for solutions, please refer to our product range. Our performance data are based on this system configuration. ²⁾ Mean temperature application, average climatic conditions. When the composite label WATERKOTTE controller WWPR class III is considered (without room temperature sensor). ³⁾ At W10/W35 and ΔT=6K. ⁴⁾ Fluid (70 % water + 30 % ethylene glycol). ⁵⁾ NC version +8 kg										
 WATERKOTTE		WATERKOTTE GmbH Gewerkenstraße 15 D-44628 Herne Tel.: +49 (0) 23 23 93 76 - 0 Fax: +49 (0) 23 23 93 76 - 99 Service Tel.: +49 23 23 93 76 - 350 info@waterkotte.de www.waterkotte.de			WATERKOTTE Schweiz AG Oberdorfstr. 37 CH-1735 Giffers Tel.: +41 (0) 26 684 82 40 Fax: +41 (0) 26 684 82 41 info@waterkotte.ch www.waterkotte.ch			WATERKOTTE Austria GmbH Carolinestraße 10 A-9073 Klagenfurt-Viktring Tel.: +43 (0) 463 29403-0 Fax: +43 (0) 463 29403-018 wouk@waterkotte.at www.waterkotte.at		
Copyright © 2019 by WATERKOTTE GmbH, Herne										