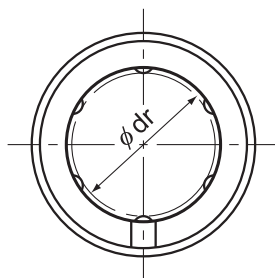


# Model LM-L



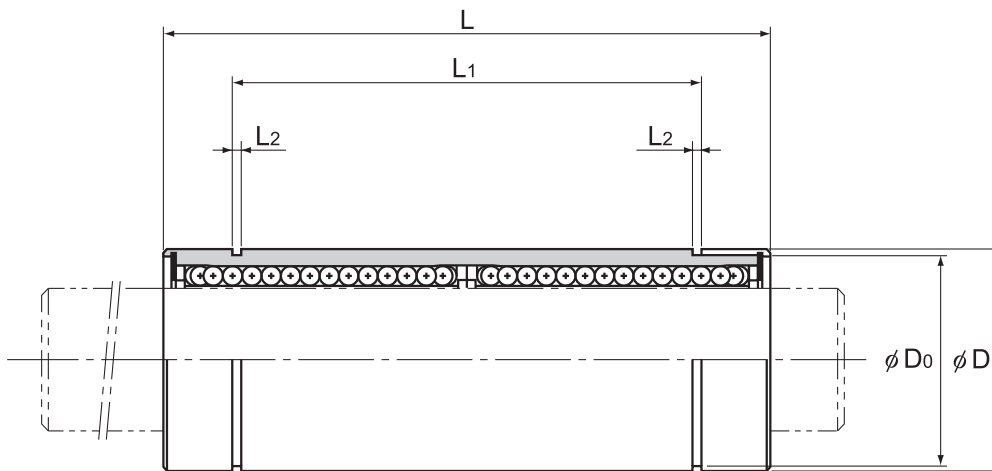
Model LM-L

Model No.	Ball rows	Main					
		Inscribed bore diameter		Outer diameter		Length	
		dr	Tolerance	D	Tolerance	L	Tolerance
LM 3L	4	3	0 -0.010	7	0 -0.013	19	0 -0.3
LM 4L	4	4		8		23	
LM 5L	4	5		10		29	
LM 6L	4	6		12		35	
LM 8L	4	8		15		45	
LM 10L	4	10		19	55		
LM 12L	4	12		21	0 -0.016	57	
LM 13L	4	13		23	61		
LM 16L	5	16		28	70		
LM 20L	5	20		32	0 -0.019	80	
LM 25L	6	25	-0.012	40	112	0 -0.4	
LM 30L	6	30	45	123			
LM 35L	6	35	0 -0.015	52	135		
LM 40L	6	40	60	-0.022	154		
LM 50L	6	50	80	192			
LM 60L	6	60	0 -0.020	90	0 -0.025		211

Note) Since this model contains a synthetic resin retainer, do not use it at temperature exceeding 80°C.  
If requiring a type equipped with a seal, indicate it when placing an order.

(Example) LM13L UU

└── Seal attached on both ends of the nut



Unit: mm

dimensions					Eccentricity (max) $\mu\text{m}$	Radial clearance tolerance $\mu\text{m}$	Basic load rating		Mass g
$L_1$	Tolerance	$L_2$	$D_0$	C N			$C_0$ N		
—	—	—	—	10	-2	139	216	3	
—		—	—	10	-3	139	254	4	
20	0 -0.3	1.1	9.6	10	-3	263	412	10	
27		1.1	11.5	15	-5	324	529	15	
35		1.1	14.3	15	-5	431	784	26	
44		1.3	18	15	-5	588	1100	48	
46		1.3	20	15	-5	657	1200	56	
46		1.3	22	15	-7	814	1570	75	
53		1.6	27	15	-7	1230	2350	147	
61		1.6	30.5	20	-9	1400	2750	163	
82	0 -0.4	1.85	38	20	-9	1560	3140	397	
89		1.85	43	20	-9	2490	5490	434	
99		2.1	49	25	-13	2650	6270	696	
121		2.1	57	25	-13	3430	8040	1087	
148		2.6	76.5	25	-13	6080	15900	2770	
170		3.15	86.5	25	-16	7650	20000	3340	

Note) A stainless steel type (LM3ML to 30ML) is also available. Contact THK for details.

If an oil hole is required, this can be indicated by appending "OH" to the end of the model number.

For further information, contact THK.