

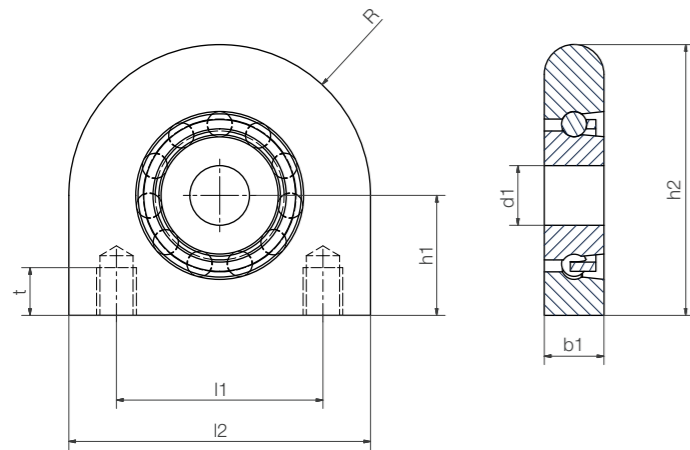
Type Material

ESTM-BB1-F25-B180-ES-SL

Pillow block bearing	Ball bearing, single row	Fixed version	Inner Ø	Race/cage material	Ball material	Slim Line
----------------------	--------------------------	---------------	---------	--------------------	---------------	-----------

Race/cage material
 B180 = xirodur® B180
Ball material
 ES = Stainless steel

- FDA-compliant components
- Can withstand loads of up to approximately 50kg (depending on installation size)

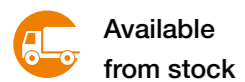


Technical data

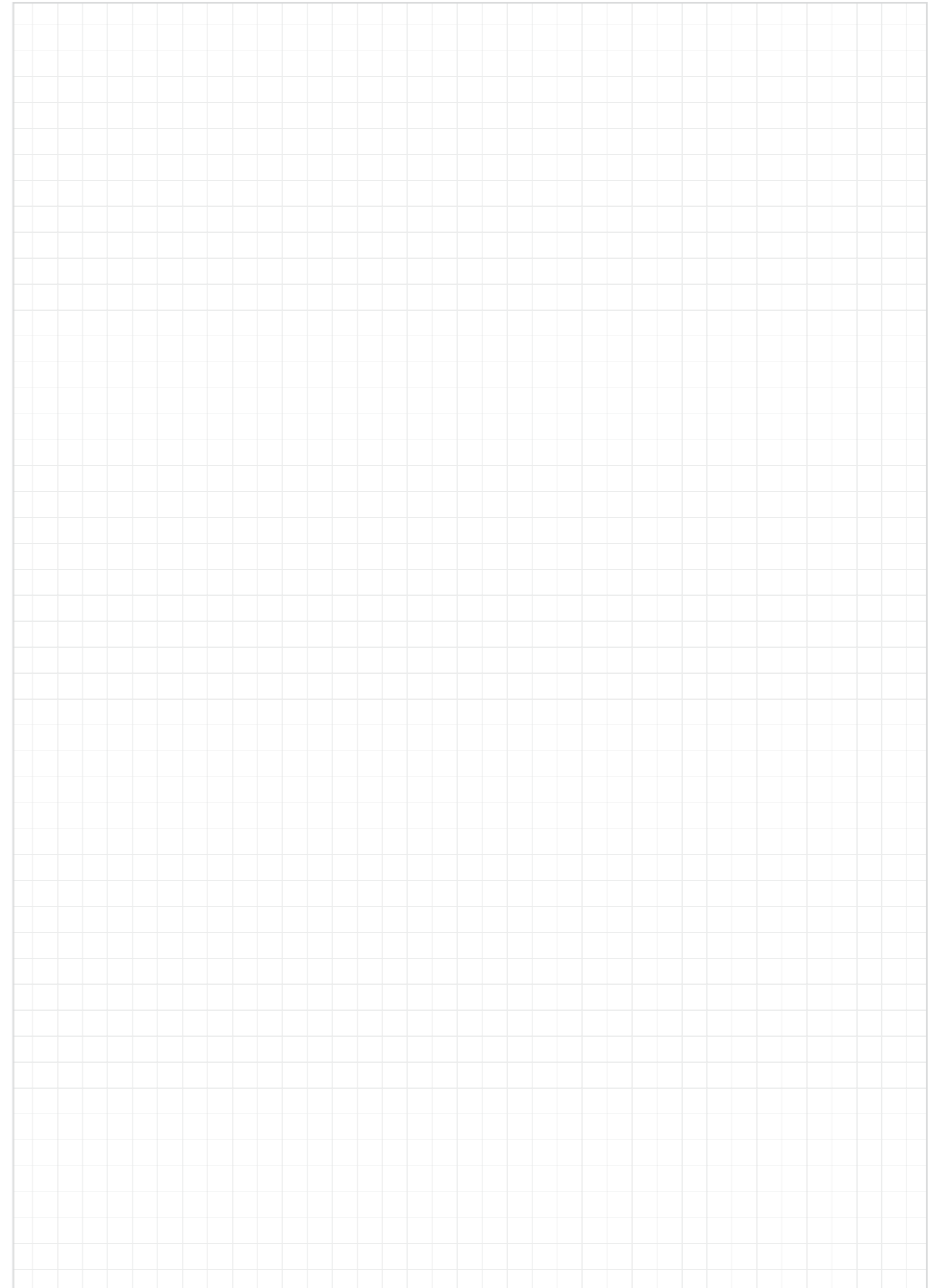
Type	Load capacity, radial		Max. speed [rpm]	Weight ES [g]
	stat. [N]	dyn. [N]		
ESTM-F15	270	350	1,250	86
ESTM-F17	280	360	1,200	85
ESTM-F20	290	370	1,150	83
ESTM-F25	480	520	850	119
ESTM-F30	500	550	840	163

Technical data

d1	b1	h1	h2	l1	l2	R	Thread	t	Part No.
15	15	30.2	68.2	52	76	38	M10	12	ESTM-BB1-F15-B180-ES-SL
17	15	30.2	68.2	52	76	38	M10	12	ESTM-BB1-F17-B180-ES-SL
20	15	30.2	68.2	52	76	38	M10	12	ESTM-BB1-F20-B180-ES-SL
25	17	36.5	78.5	56	84	42	M10	15	ESTM-BB1-F25-B180-ES-SL
30	19	42.9	89.9	66	94	47	M14	18	ESTM-BB1-F30-B180-ES-SL



Available from stock



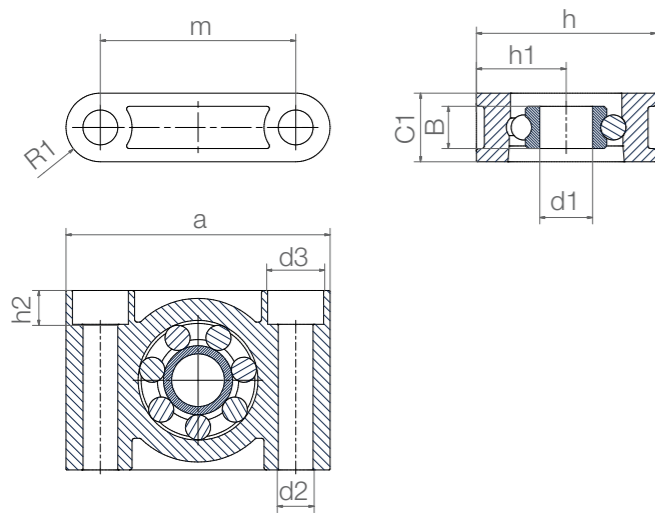
Fixed version



igumid G housing, PA cage, stainless steel balls

igumid G housing, PA cage, glass balls

- Assembly-friendly



Order key

Type	Material
------	----------

ESTM-BB1-F06-B180-ES

Pillow block bearing	Ball bearing, single row	Fixed version	Inner Ø	Race material	Ball material
----------------------	--------------------------	---------------	---------	---------------	---------------

Race material

B180 = xirodur® B180

Options:

Ball material

ES = Stainless steel

GL = Glass

Technical data

Type	Radial load capacity		Max. speed [rpm]	Weight	
	stat. [N]	dyn. [N]		B180/ES [g]	B180/GL [g]
ESTM-F06	41	43	2,600	7.7	6.7
ESTM-F10	110	130	1,900	20.2	18.2
ESTM-F20	250	320	1,150	54.1	47.7

Dimensions [mm]

Inner Ø d1	Hole Ø d2	d3	h	h1	h2	a	m	C1	B	R1	Part No.
6	5.5	-	22	11	-	36	26	10	6	5.0	ESTM-BB1-F06-B180-□
10	6.6	10.6	34	17	6.6	50	37	13	8	6.5	ESTM-BB1-F10-B180-□
20	9.0	14.0	48	24	8.6	72	54	18	12	9.0	ESTM-BB1-F20-B180-□



Order example:

ESTM-BB1-F06-B180-ES = Pillow block bearing, fixed version, made from xirodur® B180 with stainless steel balls



Available from stock

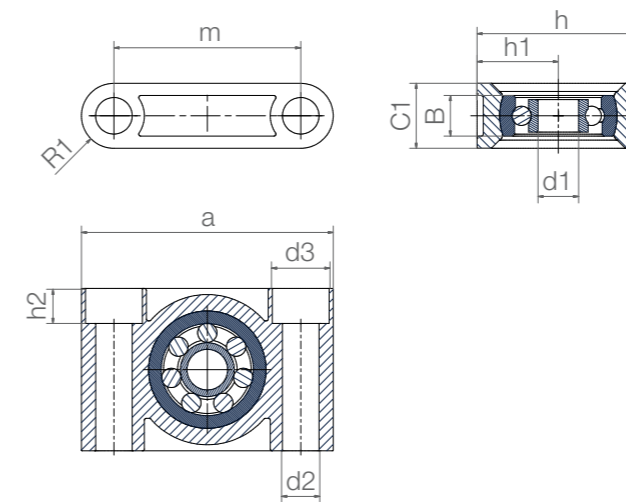
Pivoting version



igumid G housing, PA cage, stainless steel balls

igumid G housing, PA cage, Glass balls

- Compensation of misalignment errors



Order key

Type	Material
------	----------

ESTM-BB1-P 08-B180-ES

Pillow block bearing	Ball bearing, single row	Pivoting version	Inner Ø	Race material	Ball material
----------------------	--------------------------	------------------	---------	---------------	---------------

Race material

B180 = xirodur® B180

Options:

Ball material

ES = Stainless steel

GL = Glass

Technical data

Type	Radial load capacity		Max. speed [rpm]	Weight	
	stat. [N]	dyn. [N]		B180/ES [g]	B180/GL [g]
ESTM-P08	80	94	2,200	19.6	18.2
ESTM-P10	110	130	1,900	32.9	30.3
ESTM-P12	130	147	1,750	54.8	52.8

Dimensions [mm]

Inner Ø d1	Hole Ø d2	d3	h	h1	h2	a	m	C1	B	R1	Max. pivot angle	Part No.
8	6.6	10.6	34	17	6.4	50	37	13	8	6.5	±5°	ESTM-BB1-P08-B180-□
10	9.0	14.0	40	20	8.6	62	46	16	10	8	±5°	ESTM-BB1-P10-B180-□
12	9.0	14.0	48	24	8.6	72	54	18	12	9	±5°	ESTM-BB1-P12-B180-□



Order example:

ESTM-BB1-P08-B180-ES = Pillow block bearing, pivoting version, made from xirodur® B180 with stainless steel balls

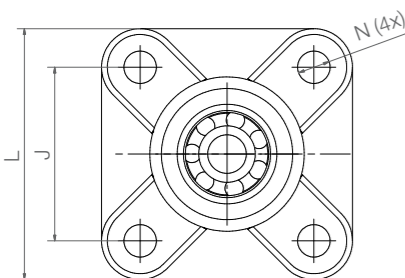
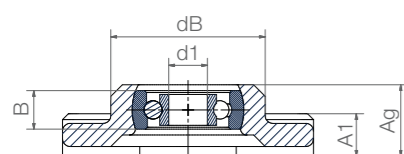


Available from stock



igumid G housing,
PA cage,
stainless steel balls or
glass balls

- Compensation of misalignment errors



Order key

Type	Material
------	----------

EFSM-BB1-P 08-B180-ES

4-hole fixed flange ball bearings	Ball bearing, single row	Pivoting version	Inner Ø	Face material	Ball material
-----------------------------------	--------------------------	------------------	---------	---------------	---------------

Race material

B180 = xirodur® B180

Options:

Ball material

ES = Stainless steel

GL = Glass

Technical data

Type	Radial load capacity		Max. speed [rpm]	Weight	
	stat. [N]	dyn. [N]		B180/ES [g]	B180/GL [g]
EFSM-P08	80	94	2,200	25.2	24.0
EFSM-P10	110	130	1,900	48.8	46.2
EFSM-P12	130	147	1,750	80.0	77.7

Dimensions [mm]

Inner Ø d1	dB d2	L	J	A1	Ag	B	N	Max. pivot angle	Part No.
8	32.5	52	36	9	15.5	8	6.4	±20°	EFSM-BB1-P08-B180- <input type="checkbox"/>
10	40.0	65	45	11	18.8	10	8.4	±20°	EFSM-BB1-P10-B180- <input type="checkbox"/>
12	48.0	74	52	14	23.5	12	8.4	±20°	EFSM-BB1-P12-B180- <input type="checkbox"/>



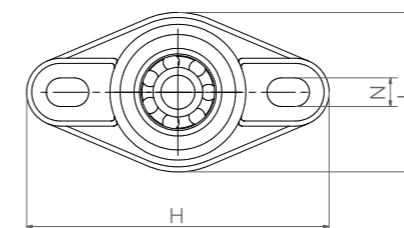
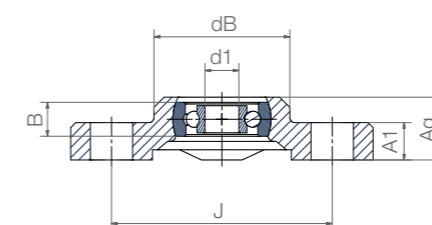
Order example:

EFSM-BB1-P08-B180-ES = 4-hole fixed flange ball bearing with race material xirodur® B180 and stainless steel balls

Available
from stock

igumid G housing,
PA cage,
stainless steel balls or
glass balls

- Trouble-free readjustment thanks to elongated holes
- Precise alignment of the bearings not necessary



Order key

Type	Material
------	----------

EFOM-BB1-P 08-B180-ES

2-hole fixed flange ball bearings	Ball bearing, single row	Pivoting version	Inner Ø	Face material	Ball material
-----------------------------------	--------------------------	------------------	---------	---------------	---------------

Race material

B180 = xirodur® B180

Options:

Ball material

ES = Stainless steel

GL = Glass

Technical data

Type	Radial load capacity		Max. speed [rpm]	Weight	
	stat. [N]	dyn. [N]		B180/ES [g]	B180/GL [g]
EFOM-P08	80	94	2,200	19.5	18.1
EFOM-P10	110	130	1,900	36.3	33.6
EFOM-P12	130	147	1,750	61.7	59.4

Dimensions [mm]

Inner Ø d1	dB d2	H	L	J	A1	Ag	B	N	Max. pivot angle	Part No.
8	32.5	72.6	38	53	10	15.5	8	6.4x10.1	±20°	EFOM-BB1-P08-B180- <input type="checkbox"/>
10	40.0	89.0	47	65	11	18.8	10	8.4x12.5	±20°	EFOM-BB1-P10-B180- <input type="checkbox"/>
12	48.5	101.0	58.5	75	14	23.5	12	8.4x12.5	±20°	EFOM-BB1-P12-B180- <input type="checkbox"/>



Order example:

EFOM-BB1-P08-B180-ES = 2-hole fixed flange ball bearing with race material xirodur® B180 and stainless steel balls

Available
from stock