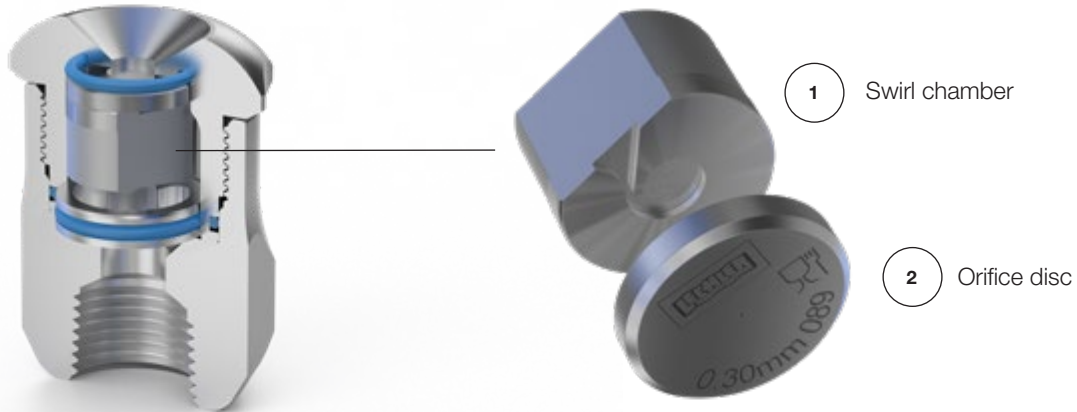


➤ DryMASTER special products

Expand your options

Lechler don't just do spray nozzles. For 100 years we have been supporting our customers with spray headers, spray lances, manifolds, valves and much more. Get in touch with your local office to find out how we can support you with lance repairs, modifications and replacements.

DryMASTER Low Flow



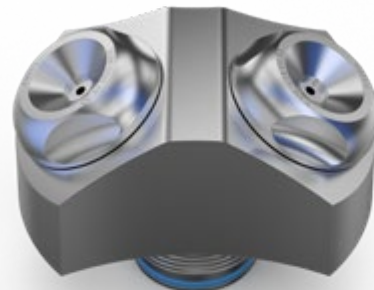
With the DryMASTER Low Flow, much smaller production volumes can be achieved with comparable back pressures and spray profiles to larger systems. The Low Flow assembly achieves this by simply swapping out the orifice disc and swirl chamber, giving the end user complete flexibility with existing plant and equipment.

Technical data

- An additional 60 orifice disc and swirl chamber combinations
- Flow range: 0.27 l/min–4.20 l/min
- Operating pressure: max. 465 bar at 20 °C (BP 1,000 bar, calculated)
- Spray angles: 30°–90°

No.	Component	Order No.
1	Low Flow swirl chamber size 1	2DM.SC1.27.LF.00.0
	Low Flow swirl chamber size 2	2DM.SC2.27.LF.00.0
	Low Flow swirl chamber size 3	2DM.SC3.27.LF.00.0
	Low Flow swirl chamber size 4	2DM.SC4.27.LF.00.0
2	Low Flow orifice disc size 0.30 mm	2DM.030.27.LF.00.0
	Low Flow orifice disc size 0.35 mm	2DM.035.27.LF.00.0
	Low Flow orifice disc size 0.40 mm	2DM.040.27.LF.00.0
	Low Flow orifice disc size 0.45 mm	2DM.045.27.LF.00.0
	Low Flow orifice disc size 0.50 mm	2DM.050.27.LF.00.0
	Low Flow orifice disc size 0.55 mm	2DM.055.27.LF.00.0
	Low Flow orifice disc size 0.60 mm	2DM.060.27.LF.00.0
	Low Flow orifice disc size 0.65 mm	2DM.065.27.LF.00.0
	Low Flow orifice disc size 0.70 mm	2DM.070.27.LF.00.0
	Low Flow orifice disc size 0.75 mm	2DM.075.27.LF.00.0
	Low Flow orifice disc size 0.80 mm	2DM.080.27.LF.00.0
	Low Flow orifice disc size 0.85 mm	2DM.085.27.LF.00.0
	Low Flow orifice disc size 0.90 mm	2DM.090.27.LF.00.0
	Low Flow orifice disc size 0.95 mm	2DM.095.27.LF.00.0
	Low Flow orifice disc size 1.00 mm	2DM.100.27.LF.00.0

DryMASTER Multi Head Adaptor

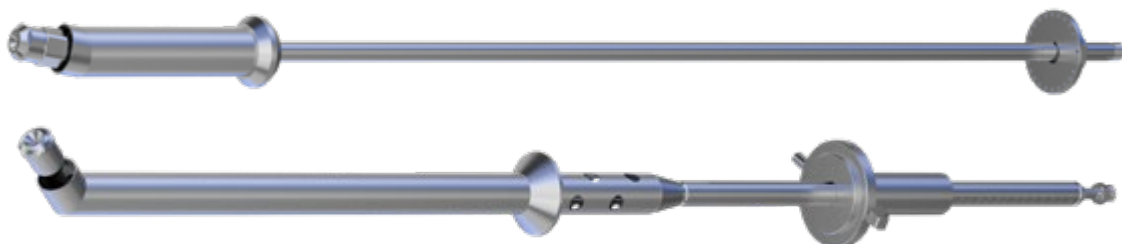


The DryMASTER Multi Head Adaptor enables the user to triple throughput while maintaining back pressure and spray profiles. Designed to fit into an 80 mm duct and attach to your standard nozzle fitting on the end of your spray lance, allowing the end user to increase capacity with minimal change to equipment.

- Fits into existing nozzle adaptor
- Designed for 80 mm penetration duct
- Easy to assemble and maintain
- No modification required to existing spray lance

Component	Order No.
DryMASTER Multi Head Adaptor 3 Ports	2DM.AS0.1Y.03.00.0
DryMASTER Multi Head Adaptor 2 Ports	2DM.AS0.1Y.02.00.0
DryMASTER body for Multi Head Adaptor	2DM.BS0.1Y.00.00.0

Spray lances



Manufactured with care and produced from Stainless Steel Duplex/316L, we provide only the highest quality equipment to work in harmony with the spray nozzle. Lechler can offer any design modifications to the spray lance design to work better with your production processes.