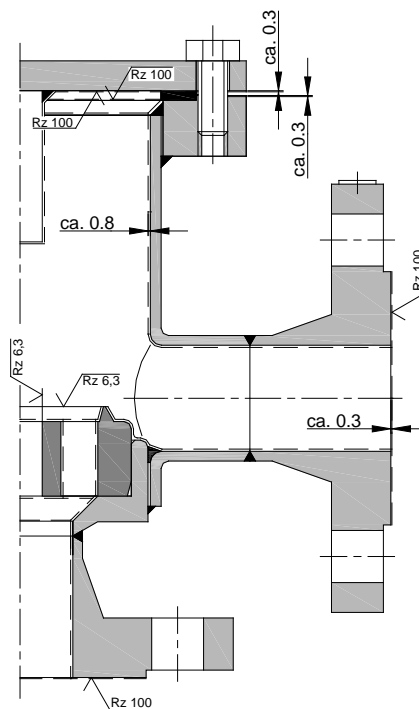
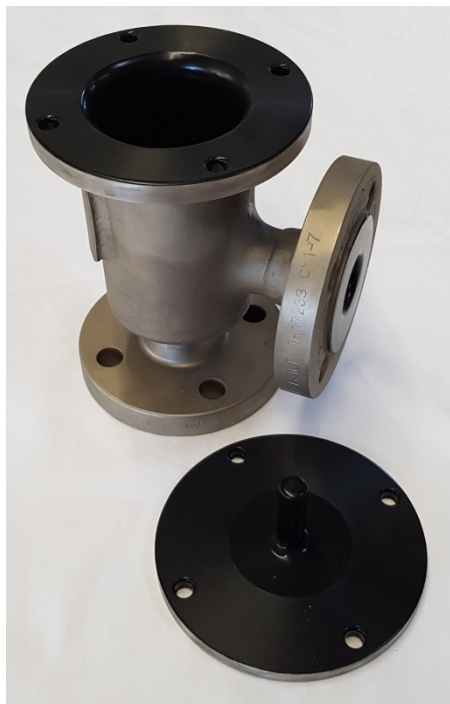


Halar® (E-CTFE) - Coating of KITO®-Armatures (with and without KITO®-flame arrester element)

Application

Used for gases or vapors, against which cast iron, steel including Cro-Ni-Mo alloys are not resistant.

Example (KITO® VD/Sc-...)



Coating specification

- Halar® / E-CTFE are thermoplastic fluoroplastics and are applied in a powder coating procedure
- Layer thickness approx. 600-800 µ, nonporous and incombustible
- Color black, electrically conductive
- Temperature resistance -75 bis +150 °C
- Halar® is resistant to most technical acids, bases and solvents
- According to current information, it is not resistant to tetrahydrofural and tetrahydrofurane

Design

	standard	optionally
housing / cover	cast steel, steel	steel, stainless steel
E-CTFE-coating	inner surfaces of cover and housing	
valve seat, valve spindle	Hastelloy	
load weight	Hastelloy	steel, stainless steel with E-CTFE-coating <i>only at higher settings</i>
valve sealing	PTFE	
gasket	PTFE	
KITO® casing	Hastelloy	
KITO® grid	Hastelloy	
bolts / nuts (inside)	Hastelloy	PEEK
bolts / nuts (outside)	A4	
temperature sensor protection tube	Hastelloy	

For certain KITO® types, Halar® coating is not feasible (e.g. KITO® VD/o3, VD/T..., VL/T...) !!!