

Air-Oil Centralized Lubrication Systems

Keep in Motion!



A lubrication system should always be as modern and efficient as the machine it's lubricating. Lincoln air-oil systems are ideally suited for this because they offer:

- Optimal supply to the bearing
- Reduction in lubricant costs
- Environmental friendliness

Index

Air-oil Centralized Lubrication Systems

Air-oil Single-line System

3

- Air-oil Mixing Distributor Valve Type AOI-FL



Air-oil Progressive System

4 – 7

- Progressive Metering Device SSV and SSVD
- Air-oil Mixing Block Type MB
- Air-oil Metering Device Type ECOFLOW
- EFC Installation Assembly



Air-oil Centralized Lubrication Systems

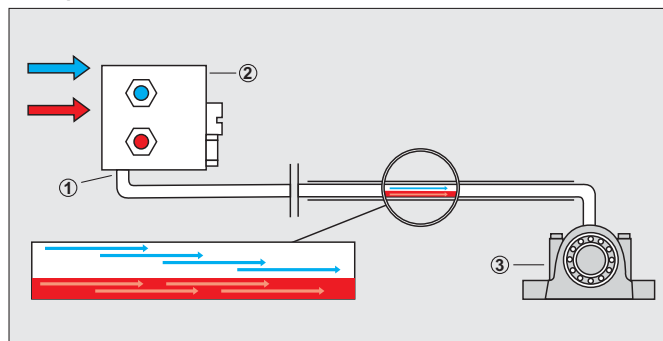
Advantages of Air-oil

- Reduced lubricant consumption: Reduction up to 1/100th of the quantity when compared to grease lubrication
- Continuous supply with fresh oil
- Increased bearing lifespan
- Positive pressure sealing of the bearing against contamination (water, dirt)
- Drastic reduction in maintenance costs; no cleaning of grease during bearing inspection
- No grease contamination of equipment, the working area and cooling water
- No misting of oil
- Environmentally friendly by simple disposal methods
- Oil and scale can individually be disposed of (clean separation)

Function Principal Air-oil Lubrication

An oil pump supplies a progressive or a single-line metering device with oil. The metered quantities of oil from the metering device are supplied to a mixing block that is connected to the compressed air network. The oil droplets in the line to the bearing are pulled apart in streaks by the flow of air. The airflow in the middle of the tube transports the oil along the inner wall of the tube. The carrier compressed air exits the bearing and simultaneously assists in sealing the bearing. No oil mist develops. A continuous, minuscule amount of oil enters the bearing.

Principal



- ① Line
- ② Air-oil Mixing Block
- ③ Bearing

■ Compressed Air
■ Oil

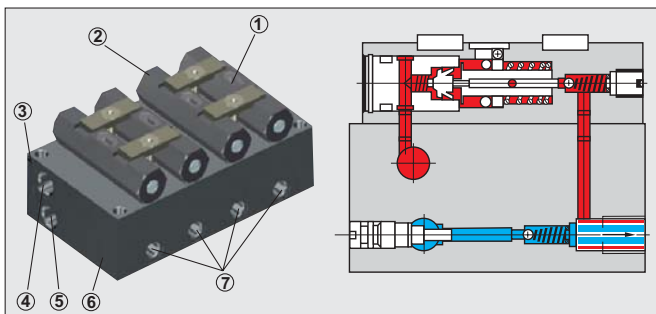
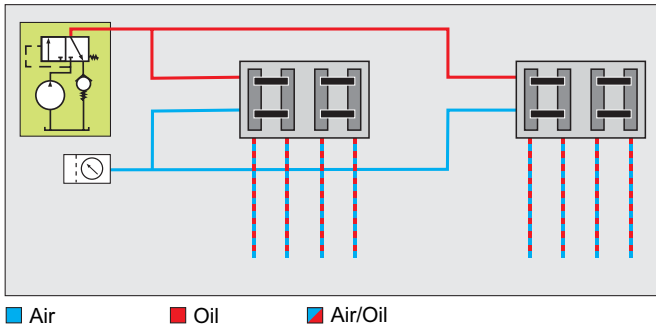
Air-oil Single-line System

Air-oil Mixing Distributor Type AOI-FL

Output quantity:
0.025 – 0.65 cm³/stroke
With metering screws in
increments of 0.025; 0.05; 0.1;
0.3; 0.4; 0.5; 0.65
Oil pressure: max. 50 bar
Venting Pressure: max. 6 bar
Air pressure: 3–6 bar
Monitoring: visual via steel ball
that indicates the stroke of the
distributor

For applications with large
variances in lubricant
requirements per point.

The AOI distributor injector
operates on the single-line
concept. This means, all injectors
are connected via a mainline to
the pump. The mainline is
alternatively pressurized with oil
and vented. Each injector outlet
can be individually metered and
the function is visually monitored
via a steel ball. In addition, the
airflow is adjustable for each
outlet. As a result, the AOI
injectors are especially suited for
systems with lubrication points
that have large variances in
lubricant requirements per point.
Visual monitoring is performed via
a steel ball that externally shows
the piston movement.



- ① Steel ball
- ② Injector
- ③ Air throttle
- ④ Oil inlet
- ⑤ Air inlet
- ⑥ Mixing block
- ⑦ Outlet air/oil

Environmental Information Air-oil System

Lincoln air-oil systems with AOI and Ecoflow distributors, reduce and accurately meter the lubricant quantities.

- Cleaning and disposal cost are reduced, as grease contamination of equipment, cooling water and the sinter is eliminated
- When comparing to oil mist lubrication, the breathing air is not contaminated with micro oil droplets. The macro oil drops remain in the bearing, thus avoiding breathing air contamination.

EMAS

VALIDATED INFORMATION

REG.NO. D-153 000 19

Lincoln Environmental Declaration
may be found under:
[www.lincolnindustrial.de/
Environment](http://www.lincolnindustrial.de/Environment)

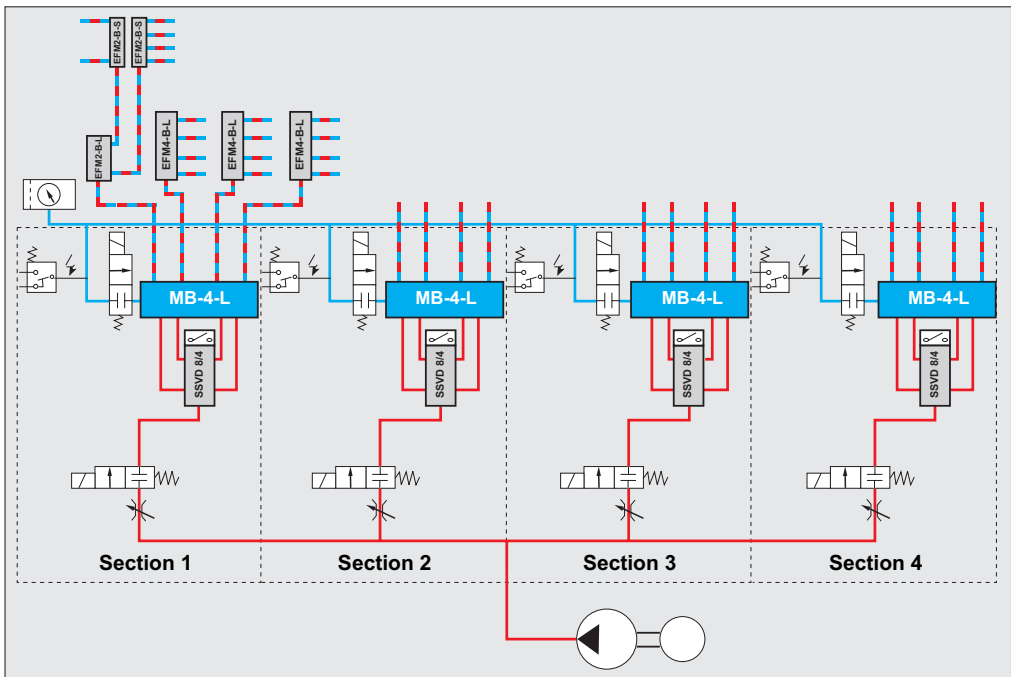
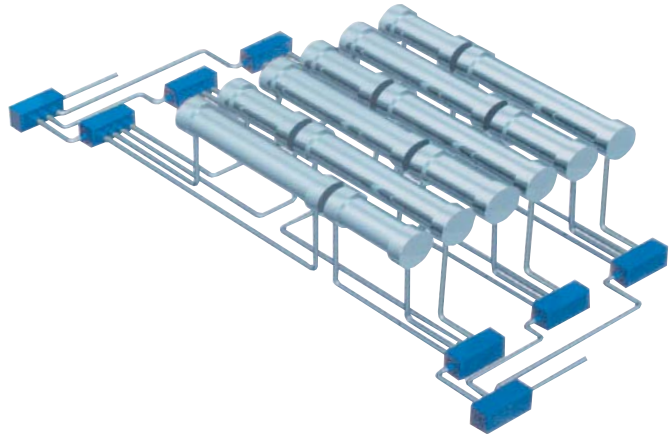
Air-oil Progressive System

When several hundred lubrication points are to be supplied, for example in continuous casting or roll-out areas, progressive systems with mixing blocks and ECOFLOW metering devices are used.

The air-oil mixture is produced within the mixing blocks. The distribution of oil to the mixing blocks occurs via SSV progressive metering devices. Depending on the size of the system, the mixing blocks are available in two different sizes. And, when different size strands are to be lubricated, SSV metering devices may be used for the oil distribution. The air-oil flow is then distributed to the lubrication points by ECOFLOW metering devices - which are also available in two sizes: "S" (small), "L" (large).

The large ECOFLOW metering devices are used as primary units that supply the smaller metering devices. This reduces the total number of mixing blocks, and provides an even distribution for large systems.

Both the mixing blocks and the ECOFLOW metering devices do not have moving parts, thus eliminating wear.



- Air
- Oil
- Air/oil

- MB: Mixing Block
- EFM: ECOFLOW Metering Device
- SSVD: Progressive Metering Device

Air-oil Progressive System

Progressive Metering Devices SSV and SSVD

Metering Device SSV

The progressive metering devices SSV supply the oil in metered quantities to the mixing blocks. Number of outlets: 6–22
Monitoring via piston detector (proximity switch)



Progressive Metering Device SSV

Metering Device SSVD

When vastly differing quantities are required, the SSVD may be used instead of the SSV. The SSVD is adjustable per outlet pair (metering from 0.08 to 1.8 cm³ in 10 increments). The metering occurs with the metering device block via metering screws.

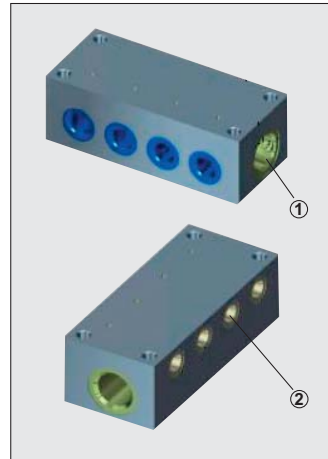


Progressive Metering Device SSVD with Metering Screws

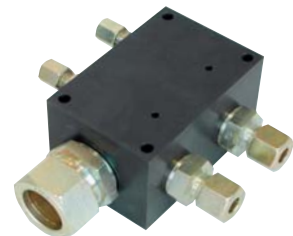
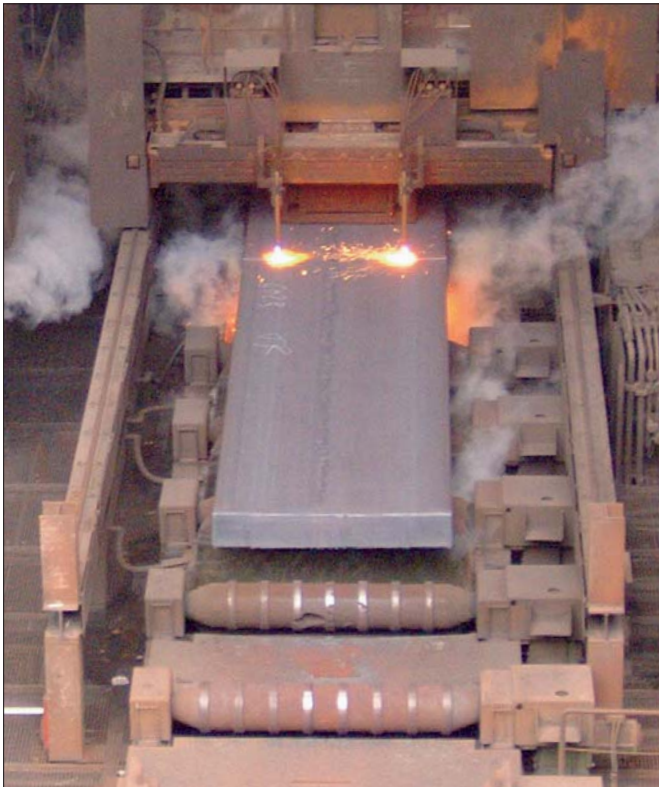
Air-oil Mixing Block Type MB

The air-oil mixing blocks produce the air-oil flow. They are available in 2 sizes: type MB..S and MB..L. MB..S mixing blocks have 2 to 6 outlets, and the MB..L have 2, 3 or 4 outlets. As a result, various size strands with different numbers of lubrication points can be supplied with a flow of air-oil. In accordance with the flow rate, the inlet and outlet port sizes are different.

Mixing Block MB



- ① Compressed Air Inlet
- ② Air-oil Outlet

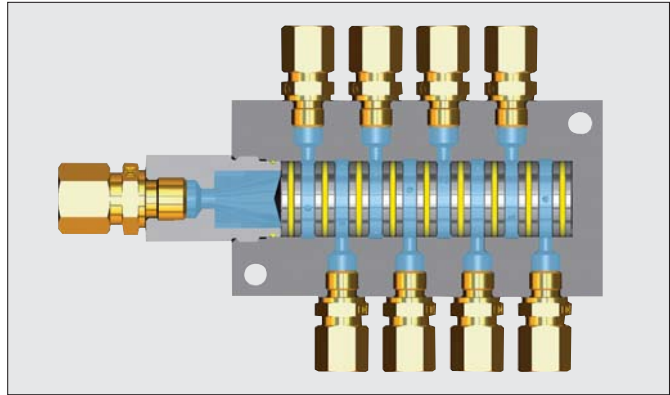


Mixing Block MB-2-S

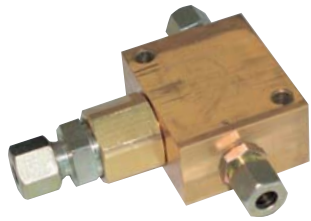
Air-oil Progressive System

with ECOFLOW Air-oil Flow Metering Device

The dividing of the finished air-oil flow is accomplished with the ECOFLOW air-oil flow metering device. The special design concept avoids the Coanda Effect* and achieves the desired split to secondary metering devices or to the lubrication points.

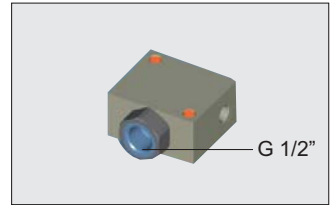
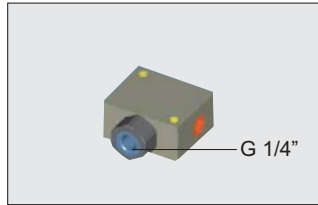


Air-oil Flow Metering Device Type EFM 5-B-S

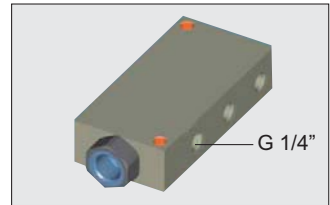
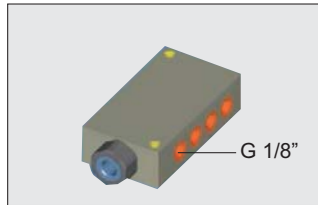


Air-oil Flow Metering Device Type EFM 2-B-L

Inlets



Outlets



The ECOFLOW metering devices are available in 2 sizes "S" (small) and "L" (large):

The large ECOFLOW metering devices are used as a primary to supply the smaller ECOFLOW metering devices.

The large ECOFLOW metering devices are available with 2 to 6 outlets, and the small metering devices with 2 to 8 outlets.

Model	Outlets
EFM 2-B-S	2
EFM 3-B-S	3
EFM 4-B-S	4
EFM 5-B-S	5
EFM 6-B-S	6
EFM 7-B-S	7
EFM 8-B-S	8

Model	Outlets
EFM 2-B-L	2
EFM 3-B-L	3
EFM 4-B-L	4
EFM 5-B-L	5
EFM 6-B-SL	6

*Coanda Effect:
The tendency of a stream of fluid to stay attached to a convex surface. This results in an undetermined build-up of the oil film on one or more ports.

Air-oil Progressive System

EFC Installation Assembly

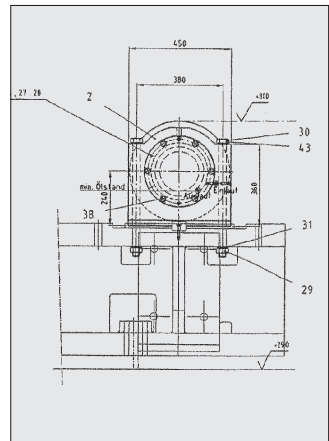
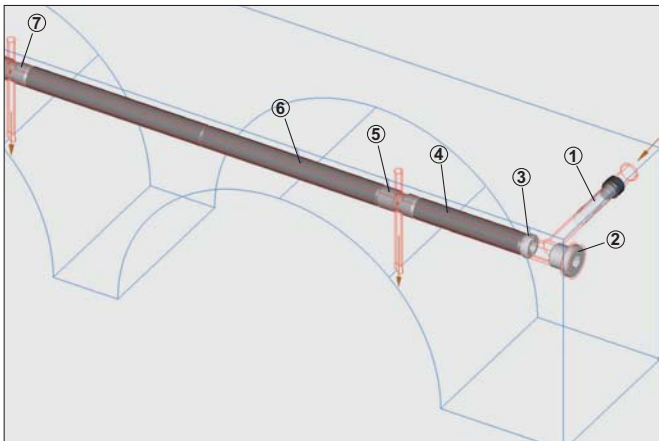
EFC installation assembly units are used for the lubrication of bearings in rolling mills or straighteners. The EFC supplies 2, 3 or 4 lubrication points from a single inlet with an air-oil flow mixture.

Every assembly consists of a number of installation cartridges and spacers.

The special design of the cartridges enable the air-oil flow to be divided into the desired portions for each connected lubrication point. The spacers are used to match the length of the assembly to that of the bearing.



ECOFLOW Installation Assembly Unit

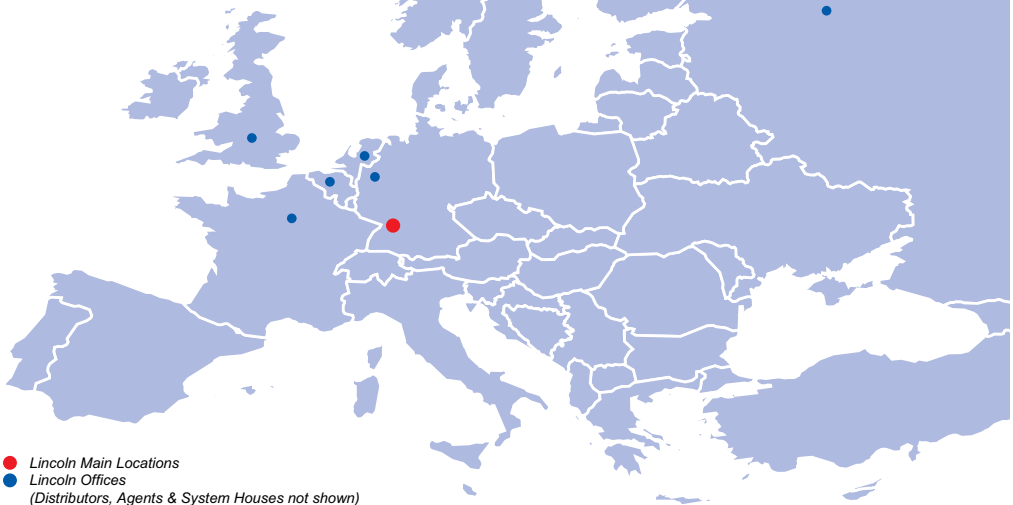


- | | |
|----------------|-----------------|
| ① Strainer | ⑤ Cartridge |
| ② Closure plug | ⑥ Spacer |
| ③ Holding ring | ⑦ End Cartridge |
| ④ Spacer | |

Lincoln's Global Distribution and Service Network

The Best in our Industry

Hundreds of Lincoln System Houses are available for you - worldwide



● Lincoln Main Locations
● Lincoln Offices
(Distributors, Agents & System Houses not shown)

In all levels of service – lubrication system selection & evaluation, custom-engineered system installation, or the supply of top-quality products – the employees of our Lincoln locations, offices, agents and distributors make certain you always get the very best value.

System House Distributors

Our system house distributors offer the highest level of expertise available in the industry. They custom-design systems with the exact combination of Lincoln components required.

Then they install the system at your facility with experienced technicians or work with your personnel to ensure the job is done correctly. Each distributor stocks a full inventory of pumps, metering devices, controllers and accessories. Each continues to meet our stringent requirements for product, systems and service knowledge. From St. Louis to Singapore, Walldorf and worldwide, Lincoln's top-of-the-industry system house distributors will be there when and where you require them.

For the nearest authorized Lincoln sales and service representative, contact:

Americas:

St. Louis, Missouri
Phone +1 314.679.4200
Fax +1 800.424.5359
www.lincolnindustrial.com
DistributorLocator

Europe/Middle East/Africa:

Walldorf, Germany
Phone + 49.6227.33.0
Fax + 49.6227.33.259
www.lincolnindustrial.de
CONTACT

Asia/Pacific:

Singapore
Phone + 65.65880188
Fax + 65.65883438



Lincoln GmbH & Co. KG
Heinrich-Hertz-Str. 2-8
D-69190 Walldorf · Germany
phone + 49.6227.33.0
fax + 49.6227.33.259

lincoln@lincolnindustrial.de
www.lincolnindustrial.de
© Copyright 2006
Printed in Germany
Form W-139-A-0806



QUALITÄTSMANAGEMENTSYSTEM
DIN EN ISO 9001 Reg.-Nr. 799



EMAS
GRUPPES
UMWELTMANAGEMENT
D-153-00019