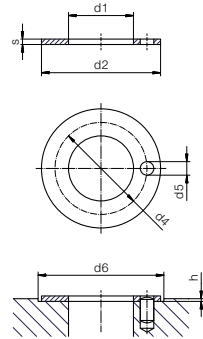


Bearing technology | Plain bearing | iglidur® X

Thrust washer (form T)

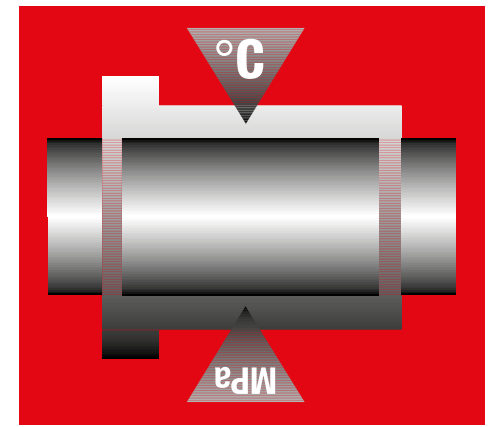


i Dimensions according to ISO 3547-1 and special dimensions

i Order example: **XTM-0620-015** – no minimum order quantity.
X iglidur® material T Thrust washer M Metric 06 Inner Ø d1 20 Outer Ø d2 015 Thickness s

d1	d2	d4	d5	h	d6	s	Part No.
+0.25	-0.25	-0.12 +0.12	+0.375 +0.125	+0.2/-0.2	+0.12	-0.05	
[mm]	[mm]	[mm]	[mm]	[mm]	[mm]	[mm]	
6	20	13	1.5	1	20	1.5	XTM-0620-015
8	18	13	1.5	1	18	1.5	XTM-0818-015
8	29	⁴⁾	⁴⁾	1	29	1.5	XTM-0829-015
8	30	⁴⁾	⁴⁾	1	30	1.5	XTM-0830-015
10	18	⁴⁾	⁴⁾	0.7	18	1	XTM-1018-010
12	24	18	1.5	1	24	1.5	XTM-1224-015
14	26	20	2	1	26	1.5	XTM-1426-015
15	22	⁴⁾	⁴⁾	0.5	22	0.8	XTM-1522-008
15	24	19.5	1.5	1	24	1.5	XTM-1524-015
16	30	22	2	1	30	1.5	XTM-1630-015
18	32	25	2	1	32	1.5	XTM-1832-015
20	36	28	3	1	36	1.5	XTM-2036-015
22	38	30	3	1	38	1.5	XTM-2238-015
24	42	33	3	1	42	1.5	XTM-2442-015
26	44	35	3	1	44	1.5	XTM-2644-015
28	48	38	4	1	48	1.5	XTM-2848-015
32	54	43	4	1	54	1.5	XTM-3254-015
38	62	50	4	1	62	1.5	XTM-3862-015
42	66	54	4	1	66	1.5	XTM-4266-015
48	74	61	4	1.5	74	2	XTM-4874-020
52	78	65	4	1.5	78	2	XTM-5278-020
62	90	76	4	1.5	90	2	XTM-6290-020

⁴⁾ Design without fixing hole



Long service life under extreme conditions

Resistant to wear and impact even at high loads and temperatures

iglidur® Z



When to use it?

- For temperatures up to +250°C long-term or +310°C short-term
- When low wear is required especially under high radial loads
- For high surface speeds
- For edge pressure in connection with high surface pressures



When not to use?

- For low loads and temperatures
iglidur® P
- When a cost-effective all-round plain bearing is required
iglidur® G
- When electrically conductive plain bearings are required
iglidur® F, iglidur® H, iglidur® H370