

## Angled ball and socket joint: WGRM and WGLM



- Connection for rotating and pivoting movements
- Lightweight
- Easy and quick assembly
- Vibration-dampening
- Resistance to dust and dirt
- Ball studs made from plastic, galvanised steel and stainless steel<sup>19)</sup>

► Accessories, page 777

## Order key

Type	Size [mm]	Options
------	-----------	---------

**WG ... M - 05**

**Angled ball and socket joint**

**Thread**

**Metric**

**Inner Ø**

### Thread

L: left-hand thread  
R: right-hand thread

### Ball stud

Blank: plastic stud  
MS: ball studs made from galvanised steel<sup>19)</sup>  
ES: ball stud made from Stainless steel<sup>28)</sup>

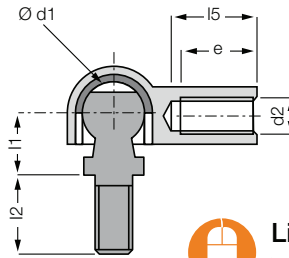
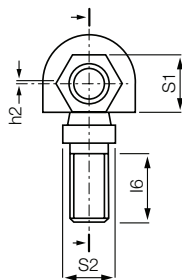
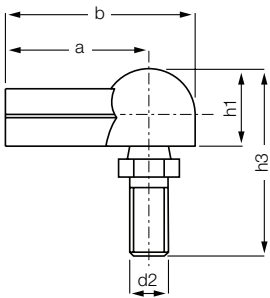
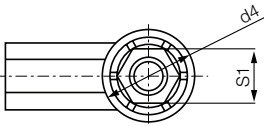
## Material:

Housing: **igumid G** ► Page 1496

Spherical cap: **iglidur® W300** ► Page 153

## Lifetime calculation online

► [www.igus.eu/igubal-expert](http://www.igus.eu/igubal-expert)



## Technical data

Part No.		Max. axial tensile force (Ball stud axis <sup>19)</sup> )		Max. axial compressive force (Ball stud axis)		Max. axial tensile force (Housing axis)		Max. axial Tensile force steel stud (Housing axis)		Weight
Right-hand thread	Left-hand thread	Short-term [N]	Long-term [N]	Short-term [N]	Long-term [N]	Short-term [N]	Long-term [N]	Short-term [N]	Long-term [N]	[g]
<b>WGRM-05</b>	<b>WGLM-05</b>	30	15	200	100	100	50	600	300	2.6
<b>WGRM-06</b>	<b>WGLM-06</b>	35	17.5	300	150	140	70	800	400	3.8
<b>WGRM-08</b>	<b>WGLM-08</b>	250	125	500	250	200	100	1,500	750	8.0
<b>WGRM-10</b>	<b>WGLM-10</b>	250	125	900	450	400	200	1,900	950	13.7

## Dimensions [mm]

Part No.		d1	d2	d4	l1	l2	l5	l6	h1	h2	h3	a	b	e	S1	S2	Max. pivot angle
Right-hand thread	Left-hand thread	+0.1	+0.5	+0.2	+0.3				+0.4	+0.5	+0.5	+0.3	+0.5	+1.0			25°
		-0.1	-0.5	-0.2	-0.3		Min.		-0.4	-0.5	-0.5	-0.3	-0.5	-1.0			
<b>WGRM-05</b>	<b>WGLM-05</b>	8.0	M5	12.8	9.0	10.2	14.0	8.2	10.8	0.65	25.6	22.0	28.4	11.0	SW 8	SW 7	25°
<b>WGRM-06</b>	<b>WGLM-06</b>	10.0	M6	14.8	11.0	12.5	16.0	10.5	12.3	0.70	30.9	25.0	32.4	13.0	SW 9	SW 8	25°
<b>WGRM-08</b>	<b>WGLM-08</b>	13.0	M8	19.3	13.0	16.5	18.0	13.5	16.2	1.15	38.8	30.0	39.7	16.0	SW12	SW11	25°
<b>WGRM-10</b>	<b>WGLM-10</b>	16.0	M10	24.0	16.0	20.0	20.0	16.0	20.0	1.15	47.0	35.0	47.0	18.0	SW14	SW13	25°

<sup>19)</sup> Galvanised steel stud only available with right-hand thread. Order example: **WGRM-05 MS**

<sup>28)</sup> Stainless steel ball stud upon request