





FOC

Harnessed Fibre Optic Cables



chainflex® readycable®



	Material	Page
Harnessed Fibre Optic Cables for video		
 FOC 2 fibres	PVC/TPE	510
 FOC 4 fibres	TPE	511
Harnessed Fibre Optic Cables for network		
 FOC 6 fibres	TPE	512
 FOC 12 fibres	TPE	512



igus 36-month
chainflex cable
guarantee and
service life
calculator based
on 2 billion test
cycles per year



Harnessed Fibre Optic Cables for video

* Technical information on the cable quality:

PVC from page 214
TPE from page 220
TPE-ROBOT from page 388

Harnessed Fibre Optic Cables, glass-fibre, 2 fibres, to your required length						
Cable quality	Part No.	Base article	No. of fibres	Fibre diameter	Ø	Bend radius
					[mm]	[x d]

ST/ST Connector

Pre-harnessed at both ends



PVC	LWL99230001	CFLG88.2.50/125	2	50/125	7.0	7.5
PVC	LWL99230002	CFLG88.2.62.5/125	2	62.5/125	7.0	7.5
TPE H*	LWL90412394	CFLG.2LB.50/125	2	50/125	8.5	5
TPE H*	LWL90412397	CFLG.2LB.62.5/125	2	62.5/125	8.5	5
TPE H*	LWL9040086	CFLG.4LB.50/125	4	50/125	9.0	5
TPE H*	LWL9040085	CFLG.4LB.62.5/125	4	62.5/125	9.0	5
TPE Robot	LWL90422492	CFROBOT5.501	2	50/125	8.5	10
TPE Robot	LWL90422495	CFROBOT5.500	2	62.5/125	8.5	10

ST/LC Connector

Pre-harnessed at both ends



PVC	LWL99230007	CFLG88.2.50/125	2	50/125	7.0	7.5
PVC	LWL99230008	CFLG88.2.62.5/125	2	62.5/125	7.0	7.5
TPE H*	LWL90412393 ¹⁾	CFLG.2LB.50/125	2	50/125	8.5	5
TPE H*	LWL90412396 ¹⁾	CFLG.2LB.62.5/125	2	62.5/125	8.5	5
TPE H*	LWL9040093	CFLG.4LB.50/125	4	50/125	9.0	5
TPE H*	LWL9040094	CFLG.4LB.62.5/125	4	62.5/125	9.0	5
TPE Robot	LWL90422491 ¹⁾	CFROBOT5.501	2	50/125	8.5	10
TPE Robot	LWL90422494	CFROBOT5.500	2	62.5/125	8.5	10

LC/LC Connector

Pre-harnessed at both ends



PVC	LWL99230005	CFLG88.2.50/125	2	50/125	7.0	7.5
PVC	LWL99230006	CFLG88.2.62.5/125	2	62.5/125	7.0	7.5
TPE H*	LWL90412395	CFLG.2LB.50/125	2	50/125	8.5	5
TPE H*	LWL90412398	CFLG.2LB.62.5/125	2	62.5/125	8.5	5
TPE H*	LWL90425050	CFLG.4LB.50/125	4	50/125	9.0	5
TPE H*	LWL9040092	CFLG.4LB.62.5/125	4	62.5/125	9.0	5
TPE Robot	LWL90422493	CFROBOT5.501	2	50/125	8.5	10
TPE Robot	LWL90422496	CFROBOT5.500	2	62.5/125	8.5	10

¹⁾When installing this cable as an extension, 2 ST connectors (MAT0176314) must also be ordered.

Note: The given outer diameters are maximum values and may tend toward lower tolerance limits.
G = with green-yellow earth core x = without earth core
igus® GmbH defines cable length as entire length including connectors or open harnessing. ▶ Page 915

Harnessed Fibre Optic Cables for video

* Technical information on the cable quality:

PVC from page 214
TPE from page 220
TPE-ROBOT from page 388

Harnessed Fibre Optic Cables, glass-fibre, 2 fibres, to your required length						
Cable quality	Part No.	Base article	No. of fibres	Fibre diameter	Ø	Bend radius
					[mm]	[x d]

SC/SC Connector

Pre-harnessed at both ends



PVC	LWL99230003	CFLG88.2.50/125	2	50/125	7.0	7.5
PVC	LWL99230004	CFLG88.2.62.5/125	2	62.5/125	7.0	7.5

ST/SC Connector

Pre-harnessed at both ends



PVC	LWL99230009	CFLG88.2.50/125	2	50/125	7.0	7.5
PVC	LWL99230010	CFLG88.2.62.5/125	2	62.5/125	7.0	7.5

LC/SC Connector

Pre-harnessed at both ends



PVC	LWL99230011	CFLG88.2.50/125	2	50/125	7.0	7.5
PVC	LWL99230012	CFLG88.2.62.5/125	2	62.5/125	7.0	7.5

Note: The given outer diameters are maximum values and may tend toward lower tolerance limits.
G = with green-yellow earth core x = without earth core
igus® GmbH defines cable length as entire length including connectors or open harnessing. ▶ Page 915

Harnessed with these connectors

Connector



Tube sinking

Tube sinking



LWL90428935

Closed corrugated tube to feed in Fibre Optic Cables
(shown cut open)

Harnessed Fibre Optic Cables for network | TPE

* Technical information on the cable quality:

TPE

from page 220

Harnessed Fibre Optic Cables, glass-fibre, 6/12 fibres, to your required length					
Cable quality	Part No.	No. of fibres	Fibre diameter	Ø	Bend radius
				[mm]	[x d]

ST/ST Connector



Pre-harnessed at both ends

TPE H*	LWL9040091	6	50/125	11.0	5
TPE H*	LWL9040090	6	62.5/125	11.0	5
TPE H*	LWL90428938	12	50/125	14.0	5
TPE H*	LWL90428937	12	62.5/125	14.0	5

LC/LC Connector



Pre-harnessed at both ends

TPE H*	LWL90428946	6	50/125	11.0	5
TPE H*	LWL90428945	6	62.5/125	11.0	5
TPE H*	LWL90428942	12	50/125	14.0	5
TPE H*	LWL90428941	12	62.5/125	14.0	5

SC/SC Connector



Pre-harnessed at both ends

TPE H*	LWL90428944	6	50/125	11.0	5
TPE H*	LWL90428943	6	62.5/125	11.0	5
TPE H*	LWL90428940	12	50/125	14.0	5
TPE H*	LWL90428939	12	62.5/125	14.0	5

Note: The given outer diameters are maximum values and may tend toward lower tolerance limits. Example images. igus® GmbH defines cable length as entire length including connectors or open harnessing. ▶ Page 915

Harnessed with these connectors

Connector



Tube sinking

Tube sinking



LWL90428935

Closed corrugated tube to feed in Fibre Optic Cables (shown cut open)

Harnessed Fibre Optic Cables for network | TPE

* Technical information on the cable quality:

TPE

from page 220

Harnessed Fibre Optic Cables, glass-fibre, 6/12 fibres, to your required length					
Cable quality	Part No.	No. of fibres	Fibre diameter	Ø	Bend radius
				[mm]	[x d]

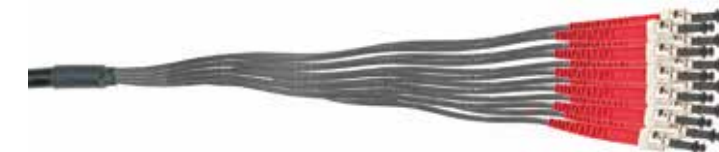
ST/ST Connector



Pre-harnessed at both ends

	LWL9040030	6	50/125	10.0	10
	LWL9040045	6	62.5/125	10.0	10
incl. conversion to SC	LWL9040032	6	50/125	10.0	10
incl. conversion to SC	LWL9040047	6	62.5/125	10.0	10
incl. conversion to LC	LWL9040031	6	50/125	10.0	10
incl. conversion to LC	LWL9040046	6	62.5/125	10.0	10

ST/ST Connector



Pre-harnessed at both ends

	LWL9040060	12	50/125	10.0	10
	LWL9040075	12	62.5/125	10.0	10
incl. conversion to SC	LWL9040062	12	50/125	10.0	10
incl. conversion to SC	LWL9040077	12	62.5/125	10.0	10
incl. conversion to LC	LWL9040061	12	50/125	10.0	10
incl. conversion to LC	LWL9040076	12	62.5/125	10.0	10

Note: The given outer diameters are maximum values and may tend toward lower tolerance limits. G = with green-yellow earth core x = without earth core

Harnessed with these connectors

Connector



ST

Tube sinking

Tube sinking



LWL90428936

Closed corrugated tube to feed in Fibre Optic Cables (shown cut open)

Fibre identification

Part No.	Fibre identification	Hollow core identification
CFLG.6G.62,5/125.TC	ecru, yellow, green, red, violet, blue	orange
CFLG.6G.50/125.TC	ecru, yellow, green, red, violet, blue	blue
CFLG.12G.62,5/125.TC	ecru, yellow, green, red, violet, blue, light blue, grey, brown, black, orange, pink	orange
CFLG.12G.50/125.TC	ecru, yellow, green, red, violet, blue, light blue, grey, brown, black, orange, pink	blue