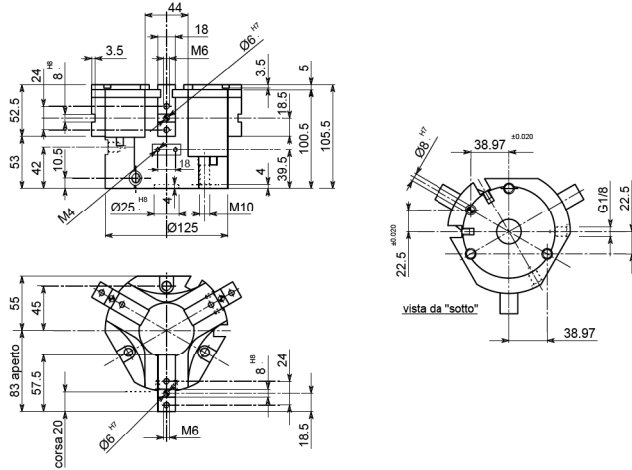


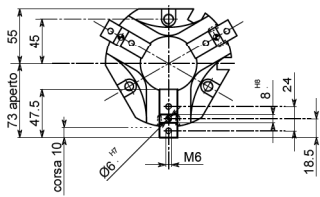


- **ORGANO DI PRESA A CORSA PARALLELA A TRE GRIFFE**
- **Three-jaw parallel gripper**
- **Drei-finger Parallelgreifer**
- **Pince de préhension à course parallèle, à trois griffes**

• Disegno OPE 125-3 • Drawing OPE 125-3 • Zeichnung OPE 125-3 • Dessin OPE 125-3

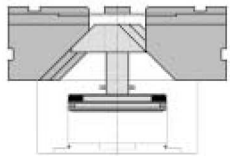


• Versione OPE 125-3 S • Version OPE 125-3 S • Ausführung OPE 125-3 S • Version OPE 125-3 S

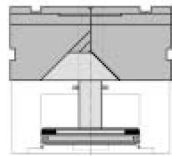


• Le dimensioni sono indicative e suscettibili di variazioni per migliorie tecniche. Ci riserviamo di apportare modifiche senza preavviso • All dimensions are indicative and subject to variation for technical upgrading. We reserve the right to make alterations without prior notification • Die Maßangaben sind inkativ und können sich bei technischen Verbesserungen ändern. Wir behalten uns vor, ohne vorherige Benachrichtigung Änderungen vorzunehmen • Les dimensions sont fournies à titre indicatif; elles peuvent subir des variations pour cause d'améliorations techniques. Nous nous réservons le droit d'apporter des modifications sans préavis.

• SCHEMA DI FUNZIONAMENTO • OPERATIONAL DIAGRAM
• BETRIEBSSCHEMA • SCHEMA DE FONCTIONNEMENT



Aperto
Open
Geöffnet
Ouvert



Chiuso
Closed
Geschlossen
Formé

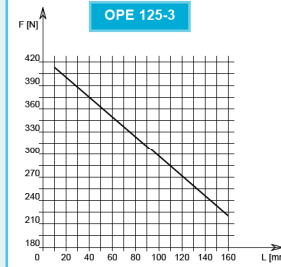


tecnomors spa. - Via Roma 141/143 - 28017 San Maurizio d'Opaglio (NO) - Italy
tel.: 0322 96142 - fax.: 0322 967453 - e mail: info@tecnomors.it

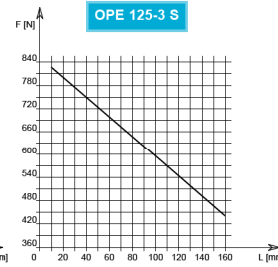


- **ORGANO DI PRESA A CORSA PARALLELA A TRE GRIFFE**
- **Three-jaw parallel gripper**
- **Drei-finger Parallelgreifer**
- **Pince de préhension à course parallèle, à trois griffes**

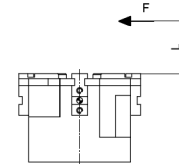
DIAGRAMMA FORZA DI CHIUSURA
CLAMPING FORCE DIAGRAM • DIAGRAM SCHLIEßKRAFT
DIAGRAMME DE LA FORCE DE FERMETURE



F = Forza di chiusura reale per griffa
L = Distanza di rilevamento
F = True clamping force per jaw
L = Reading distance



F = Reelle Schließkraft pro Greiffinger
L = Messungsabstand
F = Force de fermeture réelle par griffe
L = Distance de lecture



P = 6 bar

Valori nei dati tecnici rilevati alla distanza L = 20 mm • Technical specification values read at a distance L = 20 mm
• Werte der technischen Daten auf Distanz aufgenommen L = 20 mm • Valeurs des données techniques relevées à la distance L = 20 mm

DATI TECNICI

| | OPE125-3 | OPE125-3S |
|--|---------------------|---------------------|
| Corsa per griffa | 20 mm | 3 mm |
| Corsa pistone | 20 mm | 20 mm |
| Volume aria per doppia corsa | 150 cm ³ | 150 cm ³ |
| Forza teorica di chiusura per griffa a 6 bar | 729 N | 1431 N |
| Forza reale di chiusura per griffa a 6 bar | 400 N | 787 N |
| Forza teorica di apertura per griffa a 6 bar | 769 N | 1434 N |
| Forza reale di apertura per griffa a 6 bar | 422 N | 830 N |
| Pressione di esercizio | 2-12 bar | 2-12 bar |
| Ripetibilità | ±0.05 mm | ±0.05 mm |
| Peso | 3.15 Kg | 2.95 Kg |
| Temperatura di esercizio | -5-60 °C | -5-60 °C |
| Codice articolo | .OE875PFE | .OE675PFS |

TECHNISCHE DATEN

| | OPE125-3 | OPE125-3S |
|--|---------------------|---------------------|
| Hub pro Greiffinger | 20 mm | 3 mm |
| Kolbenhub | 20 mm | 20 mm |
| Luftvolumen pro Doppelhub | 150 cm ³ | 150 cm ³ |
| Theoretische Schließkraft pro Greiffinger 6 bar | 729 N | 1431 N |
| Reelle Schließkraft pro Greiffinger 6 bar | 400 N | 787 N |
| Theoretische Öffnungskraft pro Greiffinger 6 bar | 769 N | 1434 N |
| Reelle Öffnungskraft pro Greiffinger 6 bar | 422 N | 830 N |
| Betriebsdruck | 2-12 bar | 2-12 bar |
| Wiederholbarkeit | ±0.05 mm | ±0.05 mm |
| Gewicht | 3.15 Kg | 2.95 Kg |
| Betriebstemperatur | -5-60 °C | -5-60 °C |
| Artikelcode | .OE875PFE | .OE675PFS |

SPECIFICATIONS

| | OPE125-3 | OPE125-3S |
|---|---------------------|---------------------|
| Stroke per jaw | 20 mm | 3 mm |
| Piston stroke | 20 mm | 20 mm |
| Dual stroke air volume | 150 cm ³ | 150 cm ³ |
| Theoretical clamping force per jaw at 6 bar | 729 N | 1431 N |
| Actual clamping force per jaw at 6 bar | 400 N | 787 N |
| Theoretical opening force per jaw at 6 bar | 769 N | 1434 N |
| Actual opening force per jaw at 6 bar | 422 N | 830 N |
| Working pressure | 2-12 bar | 2-12 bar |
| Reproducibility | ±0.05 mm | ±0.05 mm |
| Weight | 3.15 Kg | 2.95 Kg |
| Working temperature | -5-60 °C | -5-60 °C |
| Article code | .OE875PFE | .OE675PFS |

DONNÉES TECHNIQUES

| | OPE125-3 | OPE125-3S |
|---|---------------------|---------------------|
| Course par griffe | 20 mm | 3 mm |
| Course piston | 20 mm | 20 mm |
| Volume d'air pour course double | 150 cm ³ | 150 cm ³ |
| Force théorique en fermeture par griffe à 6 bar | 729 N | 1431 N |
| Force réelle en fermeture par griffe à 6 bar | 400 N | 787 N |
| Force théorique en ouverture par griffe à 6 bar | 769 N | 1434 N |
| Force réelle en ouverture par griffe à 6 bar | 422 N | 830 N |
| Pression d'exercice | 2-12 bar | 2-12 bar |
| Répétibilité | ±0.05 mm | ±0.05 mm |
| Poids | 3.15 Kg | 2.95 Kg |
| Température d'exercice | -5-60 °C | -5-60 °C |
| Code article | .OE875PFE | .OE675PFS |



tecnomors spa. - Via Roma 141/143 - 28017 San Maurizio d'Opaglio (NO) - Italy
tel.: 0322 96142 - fax.: 0322 967453 - e mail: info@tecnomors.it

OPE 205-3
OPE 205-3 S

OPE 175-3
OPE 175-3 S

OPE 125-3
OPE 125-3 S

OPE 110-3
OPE 110-3 S

OPE 105-3
OPE 105-3 S

OPE 90-3
OPE 90-3 S

OPE 80-3
OPE 80-3 S

OPE 65-3
OPE 65-3 S

OPE 60-3
OPE 60-3 S

OPE 205-3
OPE 205-3 S

OPE 175-3
OPE 175-3 S

OPE 125-3
OPE 125-3 S

OPE 110-3
OPE 110-3 S

OPE 105-3
OPE 105-3 S

OPE 90-3
OPE 90-3 S

OPE 80-3
OPE 80-3 S

OPE 65-3
OPE 65-3 S

OPE 60-3
OPE 60-3 S