

Fixed flange bearings with 4 mounting holes and split housing: KFSM GT

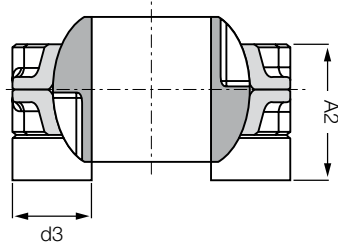
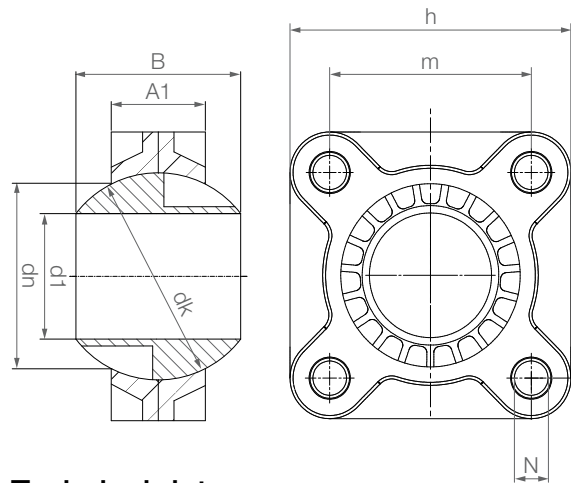
Order key

Type	Size [mm]	Options
K F S M-GT	35	- A
K series	Fixed flange bearing	4 holes
	Metric	Split housing
	Inner Ø	With push-in feet

i Material:
Housing: RN33 ▶ Page 1657
Spherical ball: iglidur® J ▶ Page 159



- Pre-assembled
- Option with push-in feet
- Resistant to dirt
- Lightweight
- Low installation space
- For high static loads
- High stiffness and durability
- Predictable service life
- Maintenance-free dry operation
- Mounting: with push-in feet M10, without push-in feet M12



Example: KFSM-GT-40-A

Technical data

Part No.	Max. static radial load		Max. static axial load		Weight [g]
	Short-term	Long-term	Short-term	Long-term	
	[N]	[N]	[N]	[N]	
KFSM-GT35-A ²³⁾	5,000	2,500	4,500	2,250	183.5
KFSM-GT40-A	5,000	2,500	4,500	2,250	161.6
KFSM-GT45-A ²³⁾	6,000	3,000	5,000	2,500	294.6
KFSM-GT50-A	6,000	3,000	5,000	2,500	260.1

Max. tightening torque for fixing: 30Nm

Dimensions [mm]

Part No.	d1	dn	d3	dk	A1	A2	B	m	h	N	Max. pivot angle
	E10										
KFSM-GT35-A ²³⁾	35.0	59.0	26.0	66.0	30.0	45.0	48.5	66.0	92.0	13.5	24°
KFSM-GT40-A	40.0	59.0	26.0	66.0	30.0	45.0	48.5	66.0	92.0	13.5	24°
KFSM-GT45-A ²³⁾	45.0	72.0	26.0	82.0	40.0	60.0	60.0	78.0	104.0	13.5	24°
KFSM-GT50-A	50.0	72.0	26.0	82.0	40.0	60.0	60.0	78.0	104.0	13.5	24°

For KFSM with distance pieces, please add an "A" to the Part No. Example: KFSM-GT-50-A

²³⁾ Diameter given by iglidur® J bore reducer

812 Online tools and more information ▶ www.igus.eu/igubal-flange



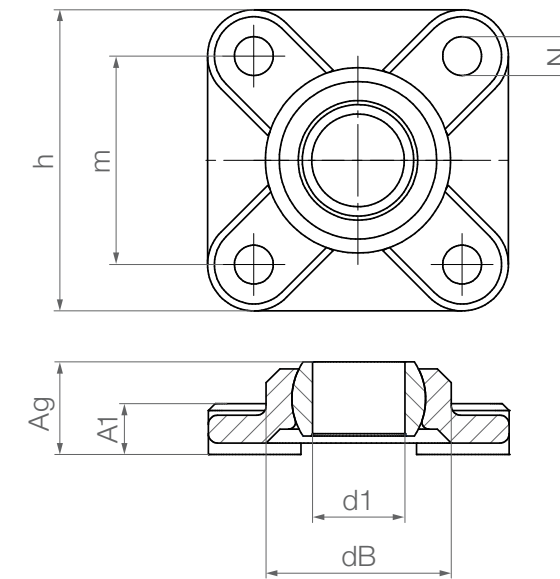
High-temperature fixed flange bearings with 4 mounting holes: EFSM-HT

Order key

Type	Size [mm]	Version
E F S M-	05	- HT
E series	Fixed flange bearing	4 holes
	Metric	Inner Ø
		High temperature

i Material:
Housing: iguton G ▶ Page 1655
Spherical ball: iglidur® X ▶ Page 279

- Applicable up to +200°C
- Easy to fit
- Compensation of misalignment errors
- Absolute corrosion resistance
- Lightweight
- Chemical-resistant (chemical table ▶ Page 1636)
- For underwater applications



Technical data

Part No.	Max. permissible axial load		Max. permissible radial load		Max. tightening torque Holes [Nm]	Weight [g]
	Short-term	Long-term	Short-term	Long-term		
	[N]	[N]	[N]	[N]		
EFSM-05-HT	275	138	440	220	0.6	3.5
EFSM-06-HT	339	170	523	262	0.6	3.3
EFSM-08-HT	412	206	713	356	1.3	7.1
EFSM-10-HT	864	432	1,202	601	2.5	11.2
EFSM-12-HT	1,024	512	1,347	674	2.5	13.3

Dimensions [mm]

Part No.	d1	dB	h	m	A1	Ag	N	Max. pivot angle
	E10		Width	Hole pitch ±0.1	Height of plate	Total height	Hole d	
EFSM-05-HT	5	14	25	17	4.5	8.5	3.2	29°
EFSM-06-HT	6	14	25	17	4.5	8.5	3.2	25°
EFSM-08-HT	8	18	33	22	5.5	10.5	4.3	25°
EFSM-10-HT	10	22	38	26	6.5	12.0	5.3	25°
EFSM-12-HT	12	25	40	28	7.0	13.0	5.3	21°

Other dimensions available upon request



3D CAD files, prices and delivery time online ▶ www.igus.eu/igubal-flange 813