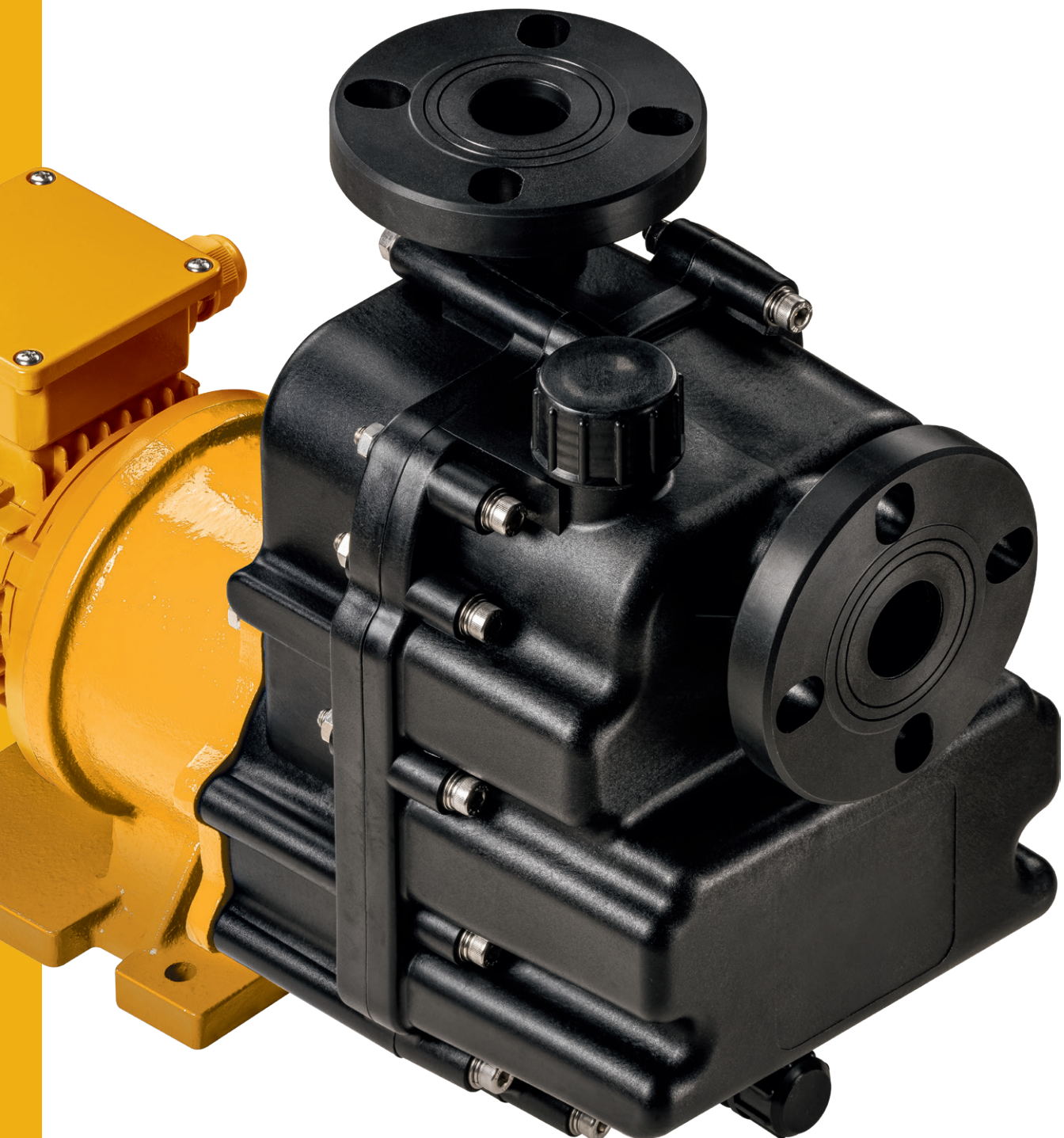


Reinventing
flow.
Since 1964

SMP

Self-Priming Centrifugal Pumps
Made of PP with Magnetic Coupling



SMP

Self-priming Centrifugal Pumps

Made of PP with Magnetic Coupling

Housing and impeller materials

PP

Elastomers

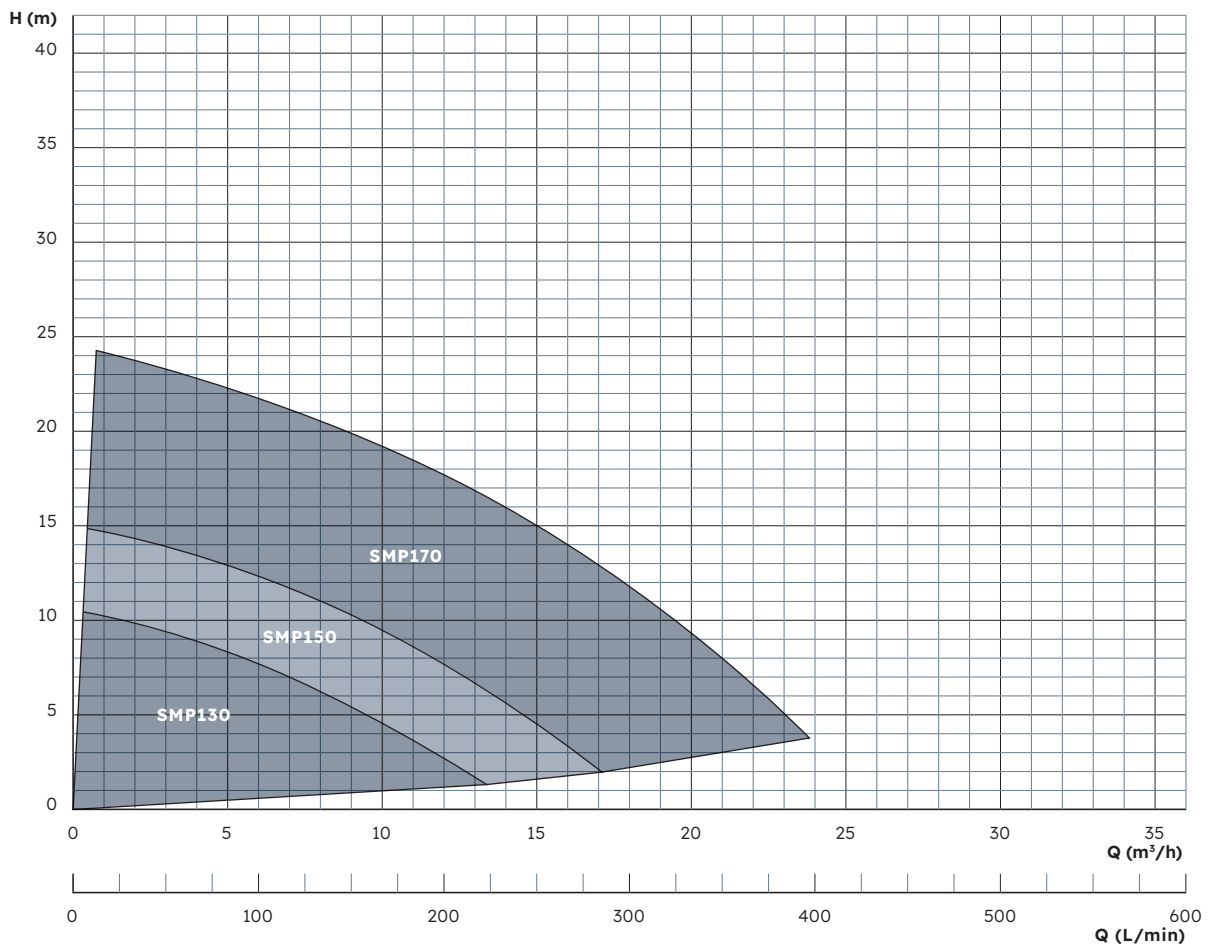
EPDM, FKM (e.g. Viton®)

Bearing material pairing

Carbon / Al₂O₃ ceramic

The SMP series is specially designed for self-priming operation. It is particularly suitable if the pump has to draw from a lower container and the suction line is filled with air. The motor power is transmitted contact-free and abrasion-free with a magnetic coupling through a closed containment shell to the pump impeller.

Performance Overview



Self-Priming Centrifugal Pumps
Made of PP with Magnetic Coupling

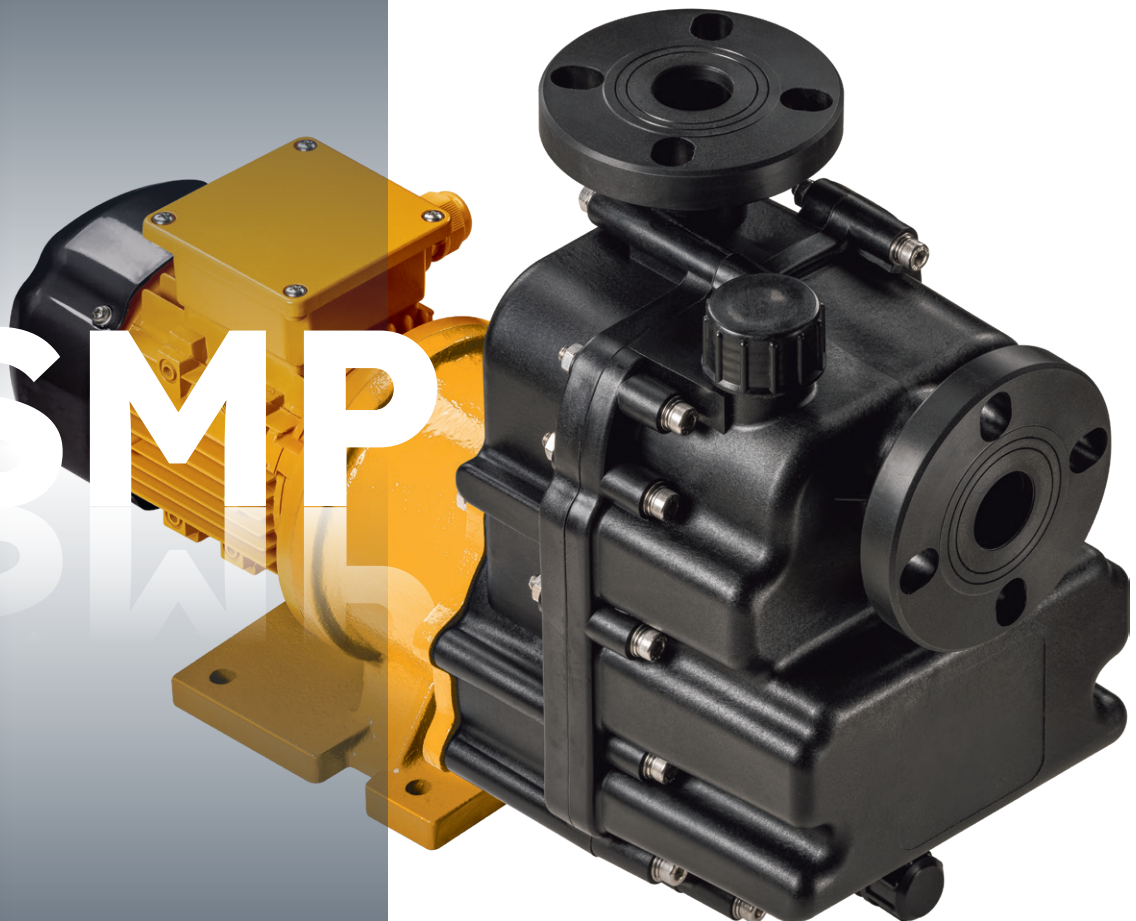
Advantages

- + Suction lift up to 7 m (depending on pump size)
- + Hermetically sealed and absolutely leak-free, since no shaft seal is required
- + Particularly suited for use with toxic, environmentally hazardous, and aggressive media

Liquid Level? Irrelevant.

Automatic self-priming up to 7 m suction lift.

SMP



SMP

Description

Characteristics

Chemical-resistant, single-stage, magnetic drive, self-priming centrifugal pump

Features

- Hermetically sealed and absolutely leak-free (no mechanical seal)
- Contact-free magnetic drive system
- All wet parts made of high-quality, corrosion-resistant plastics or PP
- Flanges and threaded connections as standard
- Universally applicable, low-noise and compact close-coupled design
- Corrosion-resistant paint finish
- All stainless steel screws in 1.4571 (316Ti)

Fields of application

Delivery of acids, bases or other corrosive, harmful or toxic liquids in such applications where the pump is installed above the liquid level and a hermetically sealed pump is required.

For example in the following applications:

- Plating and surface coating
- Semiconductor technology and solar cell production
- PCB and electronics manufacturing
- Wastewater and fresh water treatment
- Laboratory equipment and medical technology,
- Emission controls and gas scrubbers
- Battery production and energy storage
- High-purity applications, demineralized water, ultrapure water

Characteristics

Available materials

- Pump housing / wet end: PP
- Elastomers: FKM, EPDM
- Bearing material pairing: Carbon / Al₂O₃ ceramic

Standard motors

(available from stock)

- Three-phase motors: Δ230/Y400 V, 3-ph @ 50 Hz; Y460 V, 3-ph @ 60 Hz; IP55, Class F, with PTC as standard
- All three-phase motors from 0.75 kW comply with energy efficiency class IE3
- Single-phase motors: up to 1.1 kW: 230 V, 1-ph, 50/60 Hz, IP55, Class F
- ATEX-certified motors (temperature rating T3)

Special motors

(on request)

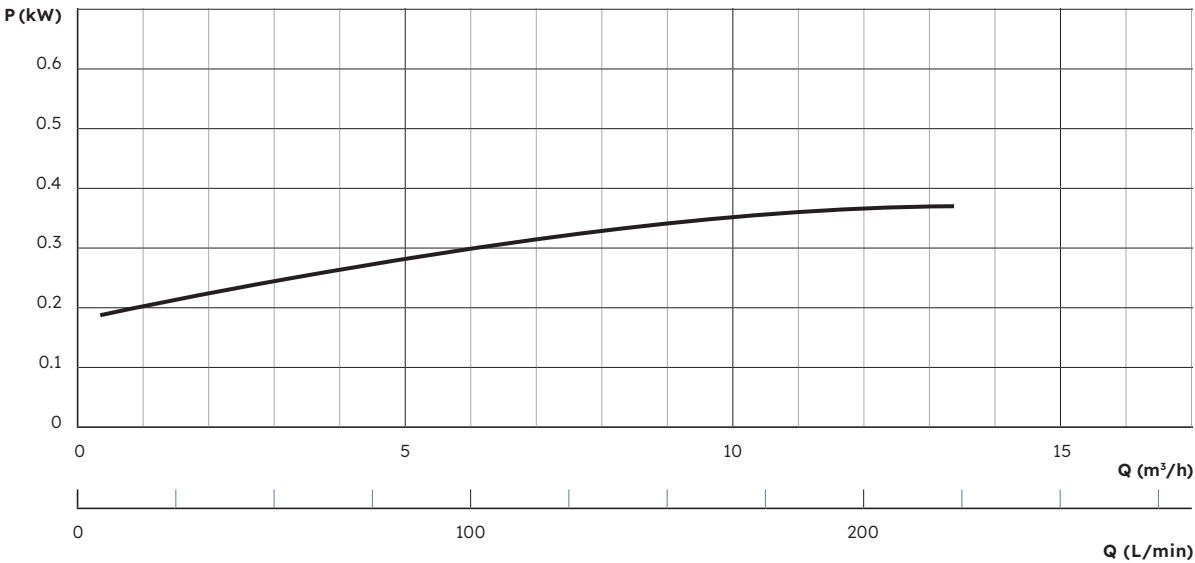
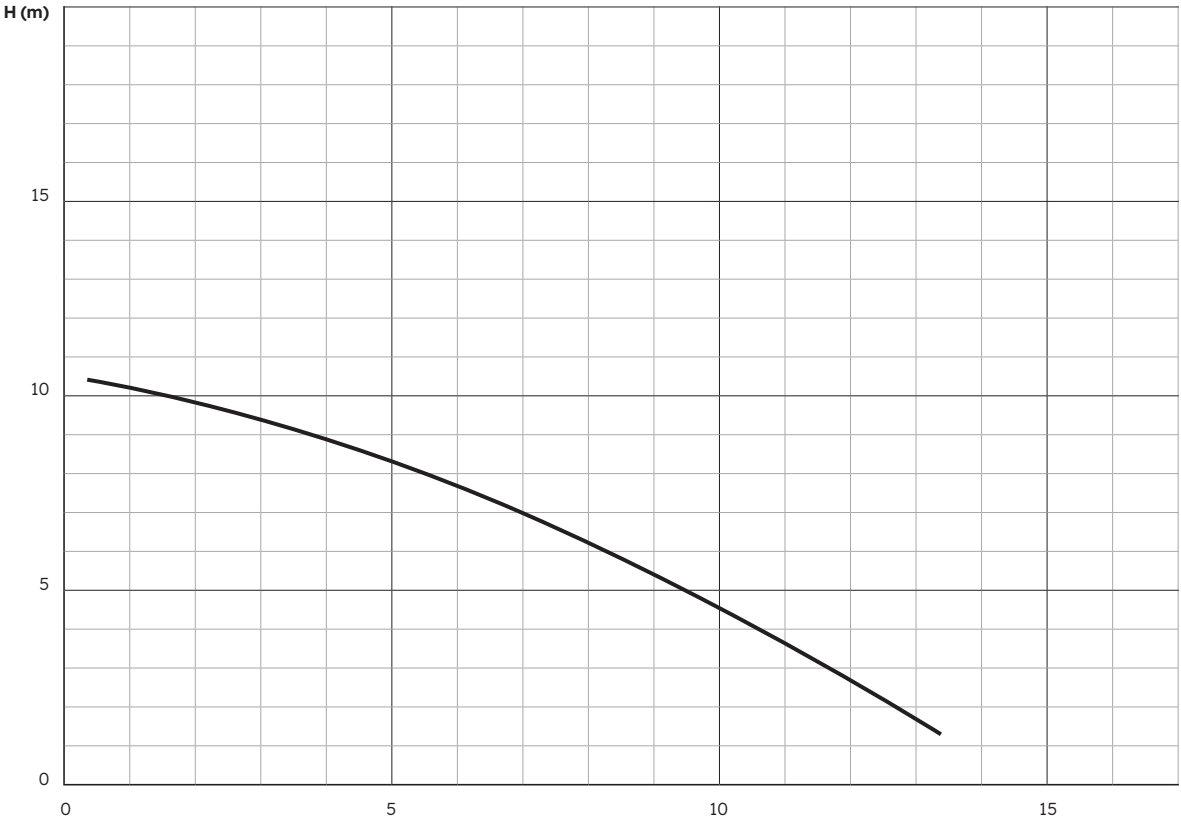
- Special voltages and frequencies
- Three-phase motors with integrated frequency converter
- ATEX-certified motors with flameproof enclosure and temperature rating T4
- Four-pole motors with 1450 rpm @ 50 Hz / 1650 rpm @ 60 Hz
- UL- and CSA-certified motors
- Special types of protection, e.g., IP65
- Special insulation classes, e.g., tropical insulation
- Multi-voltage, e.g., Δ220-290/Y380-500 V @ 50 Hz; Δ220-332/Y380-575 V @ 60 Hz
- Direct-current motors (DC or BLDC)

Operating conditions

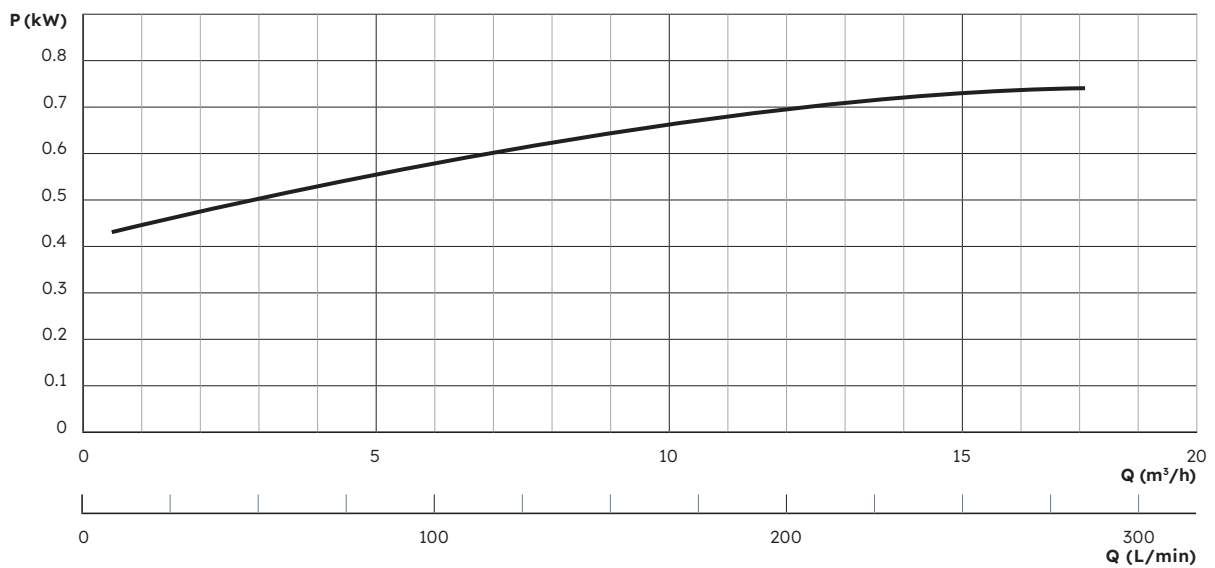
- Max. flow rate: up to 23 m³/h
- Max. delivery head: up to 24 m
- Liquid temperature: 0 to 60°C (PP)
- Ambient temperature: -10 to 40°C, higher temperatures on request
- Pumps can be adapted to high-density liquids (up to 2.0)



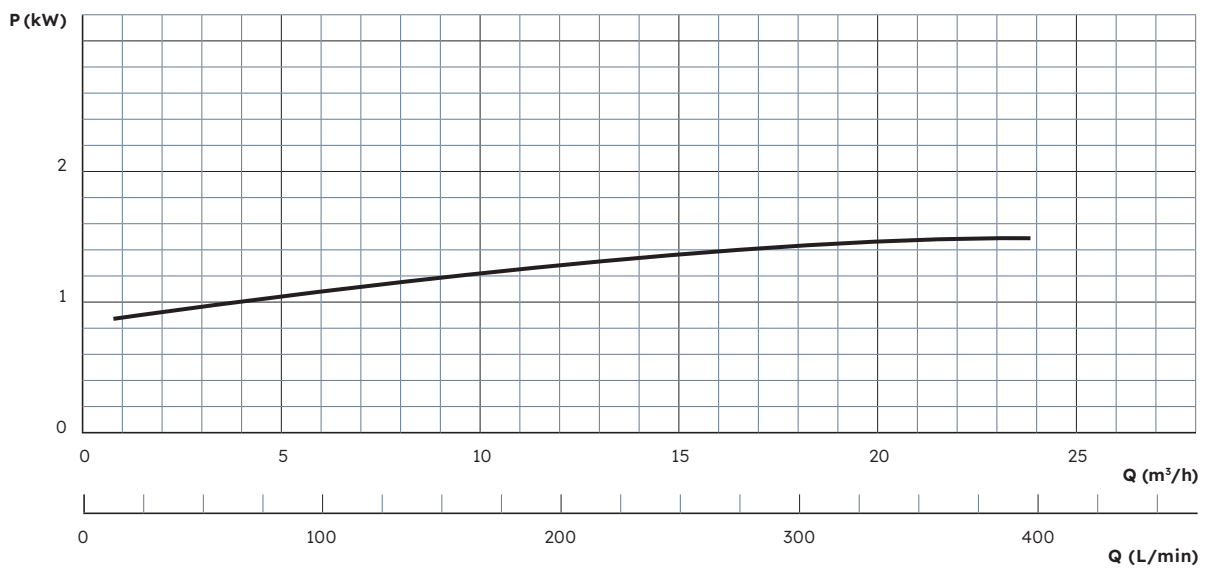
Performance Curve SMP 130



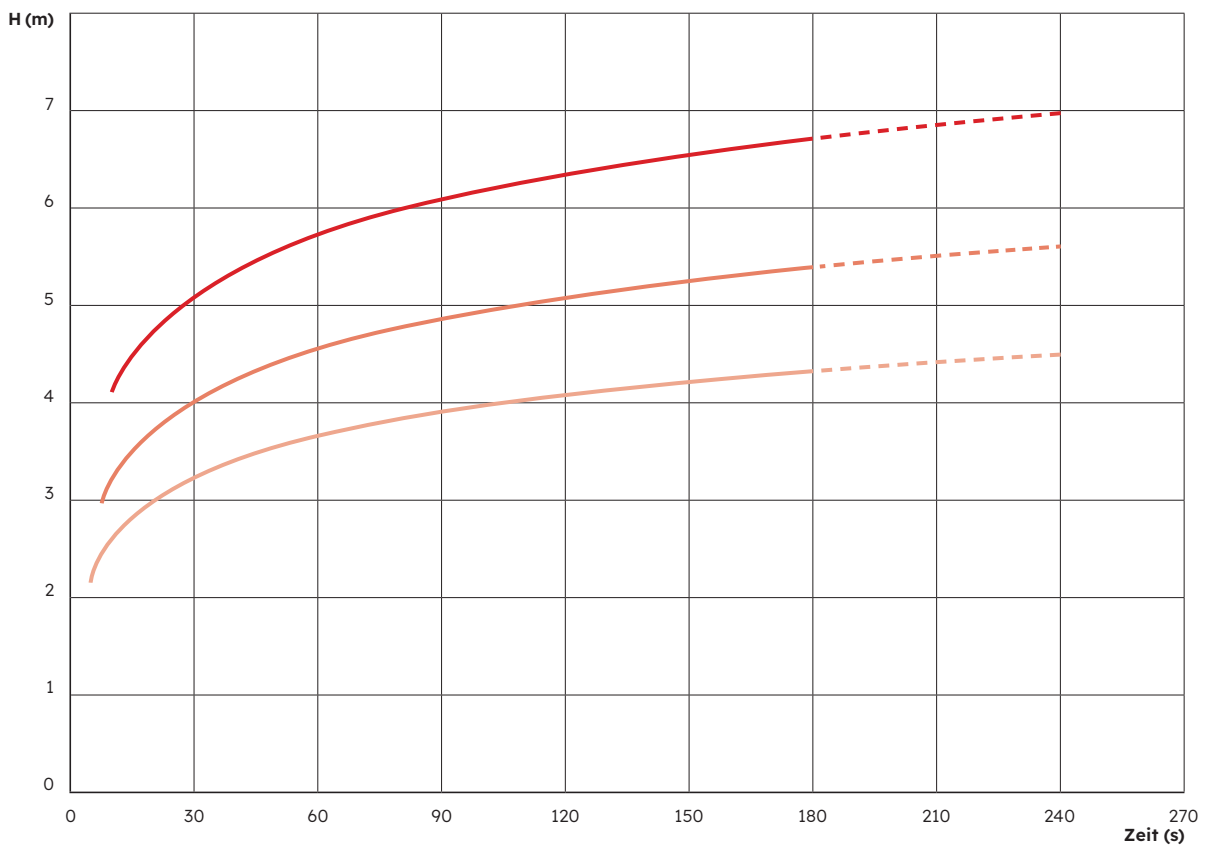
Performance Curve SMP 150



Performance Curve SMP 170

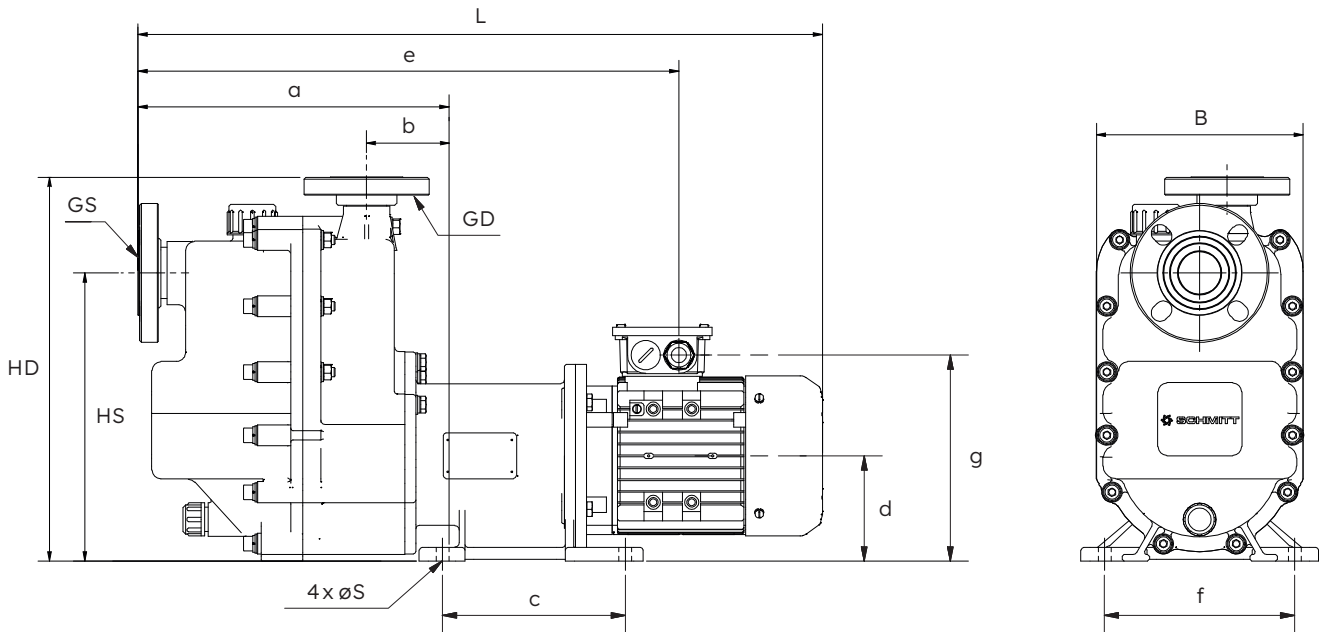


Suction Performance **SMP 130** / **SMP 150** / **SMP 170**



Remark: at water 20°C, density 1.0kg/m³, suction pipe d=DN

Dimensions



Type	GS		GD		L (mm)	B (mm)	HD (mm)	HS (mm)	øS (mm)	a (mm)	b (mm)	c (mm)	d (mm)	e (mm)	f (mm)	g (mm)
	Thread	DN	Thread	DN												
130	G1½"	40	G1½"	40	588	226	391	285	12	309	96	130	115	471	130	200
150	G1½"	40	G1½"	40	636	226	391	285	12	309	96	130	115	475	130	220
170	G2"	50	G1½"	40	749	226	420	315	12	340	90	200	115	592	208	225

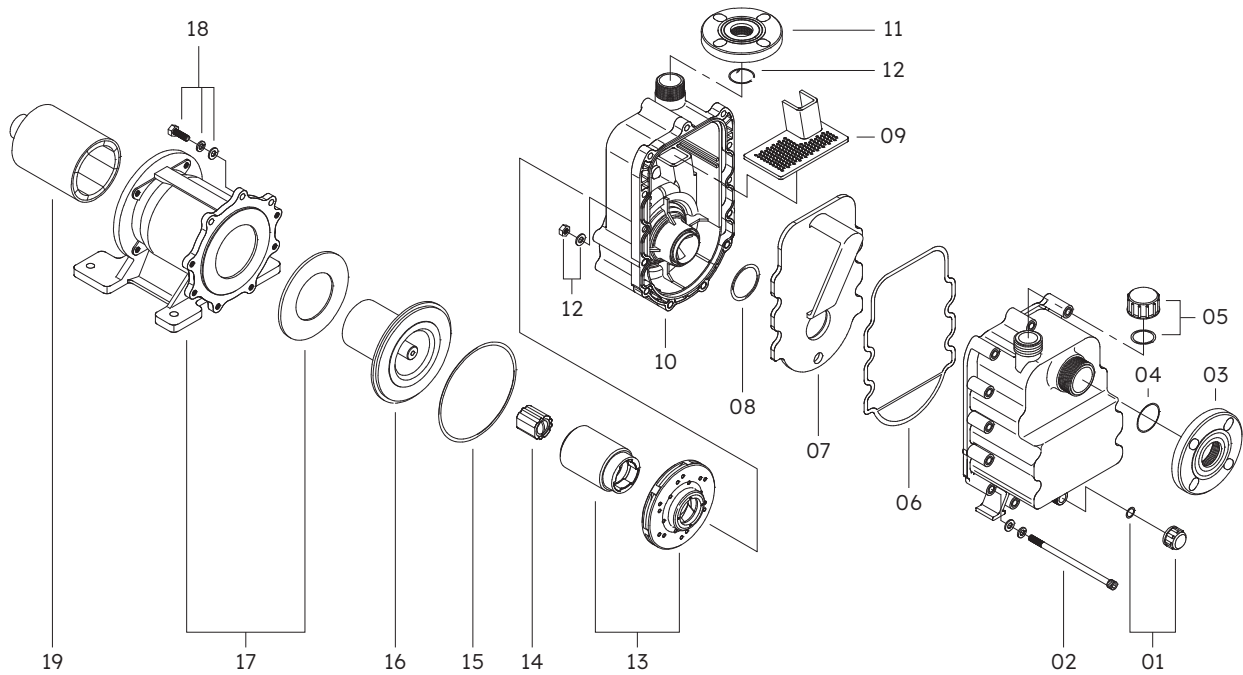
All dimensions are provided for reference purposes only and are subject to change without notice. Dimensional variations may occur depending on motor type, manufacturer, or configuration. A certified dimensional drawing will be supplied with the official quotation or order confirmation.

Fittings

A comprehensive range of accessories is available for all Schmitt pumps, facilitating seamless integration into your system:

- + Flange adapters
- + Hose connectors
- + Weld-on fittings for stainless steel piping
- + Reducers and expanders
- + NPT-threaded adaptors
- + Inlet strainers for vertical pumps
- + Extension pipes for vertical pumps

Spare Parts



Position	Description
01	Drain cap
02	Hexagon socket screw
03	Flange
04	O-Ring
05	Filler cap + O-ring
06	Housing seal
07	Seperating plate
08	O-ring
09	Filter
10	Rear casing

Position	Description
11	Flange
12	O-ring
13	impeller
14	Bushing
15	O-ring
16	Backplate
17	Flange
18	Hexagon bolt
19	Drive magnet

SCHMITT

Reinventing flow. Since 1964

NHM

Normal-Priming Centrifugal Pumps
Made of PVDF or PP with Magnetic Coupling



SCHMITT

Reinventing flow. Since 1964

MPN

Normal-Priming Centrifugal Pumps
Made of PVDF or PP with Magnetic Coupling



SCHMITT

Reinventing flow. Since 1964

U

Normal-Priming Centrifugal Pumps
Made of PVDF or PP with Single Mechanical Seal



SCHMITT

T

Sealless Vertical Centrifugal Pumps
Made of PVDF or PP Dry-Run Safe

Reinventing flow. Since 1964



SCHMITT

UP | UP-DO

Normal-Priming Centrifugal Pumps
Made of Stainless Steel with Single or Double Mechanical Seal

Reinventing flow. Since 1964



SCHMITT

Reinventing flow. Since 1964

SMP

Self-Priming Centrifugal Pumps
Made of PP with Magnetic Coupling



SCHMITT

Reinventing flow. Since 1964

P

Normal-Priming Turbine Pumps
Made of PVDF or PP with Magnetic Coupling



SCHMITT

NEOCHEM BASE

Standardized Chemical Pumps
ETFE-lined with Magnetic Coupling

Reinventing flow. Since 1964



SCHMITT

NEOCHEM CORE

Heavy-Duty Standardized Chemical Pumps
FFA-lined with Magnetic Coupling

Reinventing flow. Since 1964



SCHMITT-Kreiselpumpen GmbH & Co. KG
Einsteinstrasse 33
76275 Ettlingen, Germany
T +49 7243 5453-0
F +49 7243 5453-22
sales@schmitt-pumpen.de
schmitt-pumpen.de

