

Rod ends with female thread: KBRM and KBLM



Standard design

Stainless steel sleeve
version (MH)

- Maintenance-free dry operation
 - Robust
 - Durable in varying loads
 - Compensation of misalignment errors
 - Resistant to edge loads
 - Resistant to dirt, dust and lint
 - Resistant to corrosion and chemicals
 - Vibration-dampening
 - Suitable for rotating, oscillating and linear movements
 - Lightweight
 - Dimensional K series according to DIN ISO 12240
 - Available with stainless steel sleeve for higher tightening torque
 - Adapter screw with circlip available
- ▶ Accessories, page 861



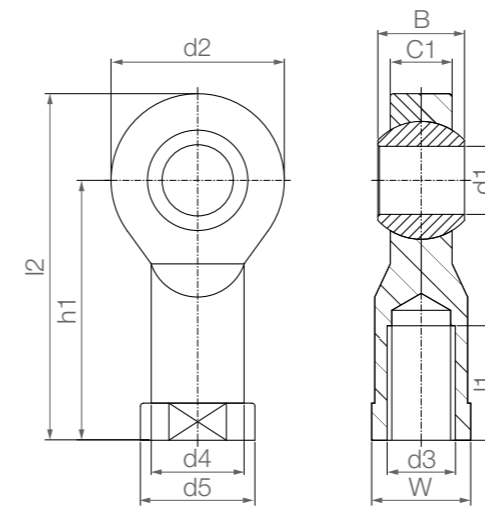
Service life calculation online
▶ www.igus.eu/igubal-expert

Technical data

Part No.	Max. static tensile strain		Max. static axial load		Min. thread depth	Max. tightening torque	Max. tightening torque through ball		Weight		
	Short-term	Long-term	Short-term	Long-term			Thread	Female thread		without stainless steel sleeve	with stainless steel sleeve
										[Nm]	[Nm]
KB□M-02	200	100	50	25	4	0.30	1	–	0.4		
KB□M-03	800	400	100	50	5	0.50	2	4	2.7		
KB□M-05 M4	1,000	500	250	125	7	0.75	5	12	3.5		
KB□M-05	1,000	500	250	125	7	1.00	5	12	3.4		
KB□M-06	1,400	700	400	200	8	1.50	10	15	4.7		
KB□M-08	2,100	1,050	700	350	11	5.00	12	40	8.6		
KB□M-10	3,100	1,550	800	400	13	15.00	20	50	14.6		
KB□M-10 F	3,100	1,550	800	400	13	6.00	20	50	14.6		
KB□M-12 ¹²⁹⁾	3,600	1,800	900	450	15	20.00	30	70	22.0		
KB□M-12 F	3,600	1,800	900	450	15	15.00	30	70	22.0		
KB□M-14	4,000	2,000	1,000	500	17	25.00	35	75	30.9		
KB□M-16	4,200	2,100	1,300	650	19	30.00	40	110	39.6		
KB□M-16 F	4,200	2,100	1,300	650	19	27.50	40	110	39.6		
KB□M-18	4,600	2,300	1,600	800	21	45.00	45	150	55.0		
KB□M-20	5,400	2,700	2,100	1,050	22	60.00	55	200	73.5		
KB□M-20 M20	5,400	2,700	2,100	1,050	22	60.00	55	200	73.5		
KB□M-22	7,000	3,500	2,200	1,100	25	75.00	60	–	94.8		
KB□M-25	8,500	4,250	2,300	1,150	28	120.00	60	–	119.8		
KB□M-30	10,500	5,250	2,500	1,250	34	135.00	60	–	177.0		
KB□M-30 M27x2	10,500	5,250	2,500	1,250	34	135.00	60	–	189.6		

¹²⁹⁾ Integrated lock nut. Drawing as for KCRM, page 751

746 Online tools and more information ▶ www.igus.eu/rod-end

Rod ends with female thread:
KBRM and KBLM

Order key

Type	Size [mm]	Options
K B □ M -	02	MH
K series	Housing (female thread)	Thread
	Metric	Inner Ø
		Thread L = Left-hand thread R = Right-hand thread
		Add-on: MH = With stainless steel sleeve



Material:

Housing: igumid G ▶ Page 1654
Spherical ball: iglidur® W300 ▶ Page 171



Imperial dimensions available
▶ Page 1608

Dimensions [mm]

Part No.	d1	d2	d3	d4	d5	C1	B		h1	l1	l2	W	Max. pivot angle
							without stainless steel sleeve	with stainless steel sleeve					
							+0.2						
KB□M-02	2	9	M2	4.0	4.6	3.0	4	–	12.5	6	17	SW4	30°
KB□M-03	3	13	M3	6.5	8.0	4.5	6	6.2	18.5	8	25	SW6	30°
KB□M-05 M4	5	18	M4	9.0	12.0	6.0	8	8.2	27	10	36	SW9	30°
KB□M-05	5	18	M5	9.0	12.0	6.0	8	8.2	27	10	36	SW9	30°
KB□M-06	6	20	M6	10.0	13.0	7.0	9	9.2	30	12	40	SW11	29°
KB□M-08	8	24	M8	13.0	16.0	9.0	12	12.2	36	16	48	SW14	25°
KB□M-10	10	30	M10	15.0	19.0	10.5	14	14.2	43	20	58	SW17	25°
KB□M-10 F	10	30	M10 x 1.25	15.0	19.0	10.5	14	14.2	43	20	58	SW17	25°
KB□M-12	12	34	M12	–	–	12.0	16	16.2	50	25	67	SW17	25°
KB□M-12 F	12	34	M12 x 1.25	18.0	22.0	12.0	16	16.2	50	22	67	SW19	25°
KB□M-14	14	38	M14	20.0	25.0	13.5	19	19.2	57	25	76	SW22	25°
KB□M-16	16	42	M16	22.0	27.0	15.0	21	21.2	64	28	85	SW22	23°
KB□M-16 F	16	42	M16 x 1.5	22.0	27.0	15.0	21	21.2	64	28	85	SW22	23°
KB□M-18	18	46	M18 x 1.5	25.0	31.0	16.5	23	23.2	71	32	94	SW27	23°
KB□M-20	20	50	M20 x 1.5	28.0	34.0	18.0	25	25.2	77	33	102	SW30	23°
KB□M-20 M20	20	50	M20 x 2.5	28.0	34.0	18.0	25	25.2	77	33	102	SW30	23°
KB□M-22	22	56	M22 x 1.5	30.0	37.0	20.0	28	–	84	37	112	SW32	22°
KB□M-25	25	60	M24 x 2.0	32.0	41.0	22.0	31	–	94	42	124	SW36	22°
KB□M-30	30	70	M30 x 2.0	37.0	50.0	25.0	37	–	110	50	145	SW41	22°
KB□M-30 M27x2	30	70	M27 x 2.0	37.0	50.0	25.0	37	–	110	50	145	SW41	22°

Rod ends can be ordered in metric dimensions with stainless steel sleeve with the addition of MH after the part numbers listed here. Example: KBRM-10 MH (Inner Ø: 10mm).



3D CAD files, prices and delivery time online ▶ www.igus.eu/rod-end 747

Rod ends, female thread; 2nd generation: KBRM CL and KBLM CL



- Available with stainless steel sleeve for higher tightening torque
- Dimensional K series according to DIN ISO 12240
- Adapter screw with circlip available
▶ Accessories, page 861



Simple assembly due to the hexagonal body and the integrated lock nut

Service life calculation online
▶ www.igus.eu/igubal-expert

Technical data

Part No.	Max. static tensile strain		Max. static axial force		Min. thread depth [mm]	Max. tightening torque [Nm]	Max. tightening torque through ball		Weight [g]
	Short-term [N]	Long-term [N]	Short-term [N]	Long-term [N]			without stainless steel sleeve [Nm]	with stainless steel sleeve [Nm]	
KB□M-06 CL	1,400	700	300	150	8	0.75	10	15	4.5
KB□M-08 CL	2,100	1,050	500	250	11	2	12	40	8.6
KB□M-10 CL	3,100	1,550	800	400	13	3	20	50	14.1

Alternative spherical ball materials ▶ Page 841



RKM: Low-cost



JKM: Low moisture absorption



WKM-MH: Standard spherical ball with stainless steel sleeve

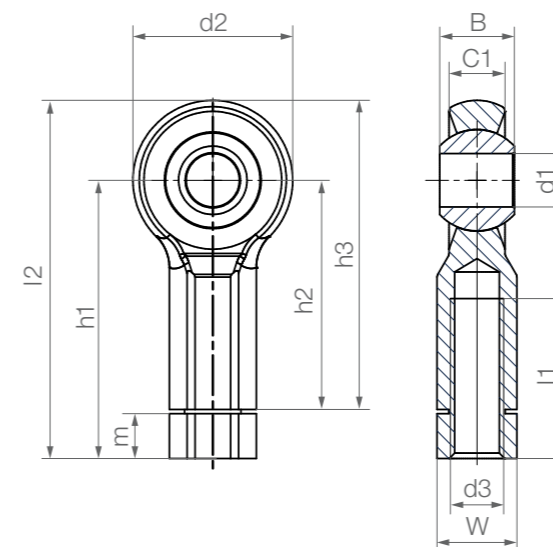


J4KM: Low-cost and low moisture absorption

748 Online tools and more information ▶ www.igus.eu/rod-end



Rod ends, female thread; 2nd generation: KBRM CL and KBLM CL



Order key

Type	Size [mm]	Version
K B □ M -	06	CL MH
K series	Housing (female thread)	Thread
	Metric	Inner Ø
		2nd generation

Options: Thread L = Left-hand thread R = Right-hand thread
Add-on: MH = With stainless steel sleeve

Material: Housing: igumid G ▶ Page 1654
Spherical ball: iglidur® W300 ▶ Page 171
Other spherical ball materials upon request ▶ Page 841

Dimensions [mm]

Part No.	d1	d2	d3	W	B		C1	h3	h1	h2	l1	l2	m	Max. pivot angle
					without stainless steel sleeve	with stainless steel sleeve								
	E10													
							+0.2							
KB□M-06 CL	6	20	M6	SW10	9	9.2	7	40	36.5	30	20	46.5	5.7	40°
KB□M-08 CL	8	24	M8	SW13	12	12.2	9	48	44.3	36	25	56.3	7.5	35°
KB□M-10 CL	10	30	M10	SW15	14	14.2	10.5	58	52.2	43	30	67.2	8.4	35°

Rod ends can be ordered in metric dimensions with stainless steel sleeve with the addition of **MH** after the part numbers listed here. Example: KBRM-10 CL **MH** (Inner Ø: 10mm).

For another spherical bearing material than iglidur® W300, please add "J" to the part number, for example. Example: KBRM-10 CL J.



3D CAD files, prices and delivery time online ▶ www.igus.eu/rod-end 749