

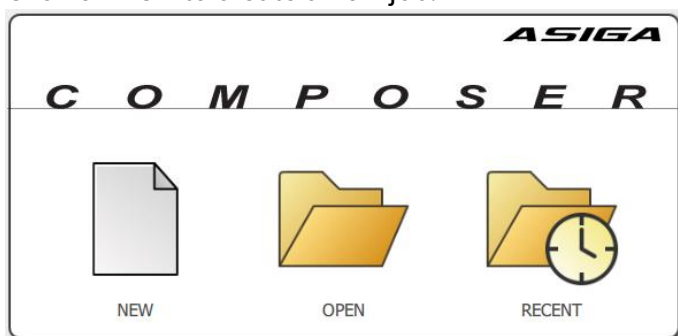
Material profile iglidur® i4000 for Asiga DLP 3D printers

The profiles provided were created to the best of our knowledge and belief and are intended to enable an easy start when using our triboresins with Asiga DLP 3D printers. The profile was created on various Asiga systems. igus® accepts no liability for any malfunctions or damage resulting from the use of this configuration. Furthermore, igus® cannot provide support for the configuration and operation of the 3D printer.

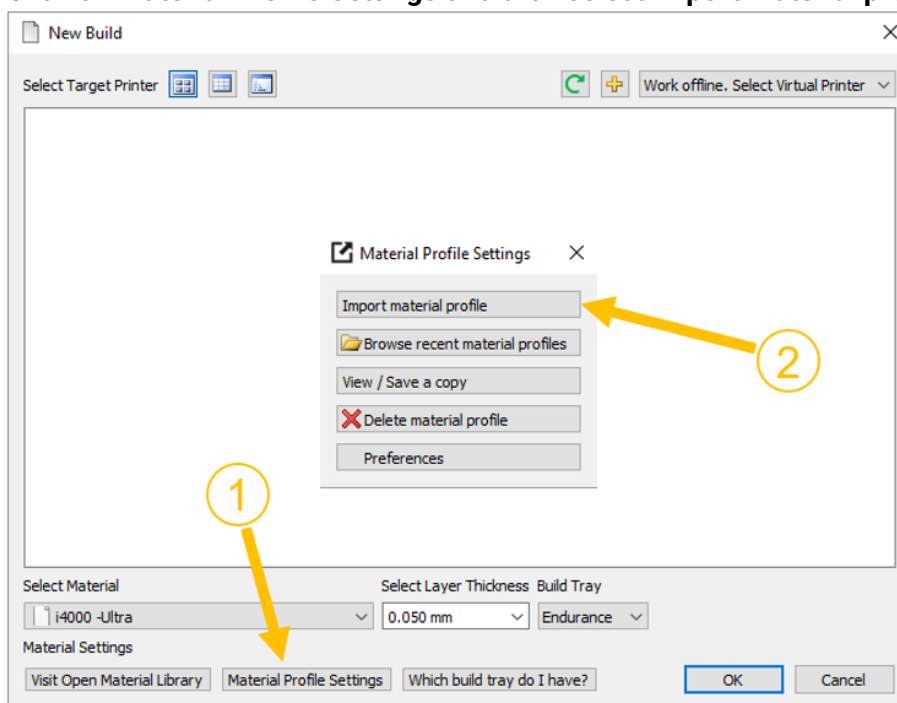
For best results and good processing, the processing instructions for the i4000 should be observed.

The following explains how to import the material profile provided into Composer:

1. Start **Composer**.
2. Click on **New** to create a new job.



3. Click on **Material Profile Settings** and then select **Import material profile**.



4. Select the downloaded parameter profile on your PC and click **Open**.
5. Finally, you can select the desired printer and layer thickness as usual.