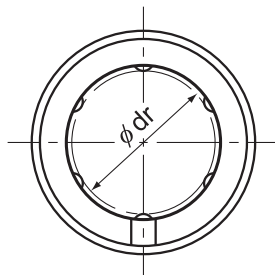


Model LM-L



Model LM-L

| Model No. | Ball rows | Main | | | | | |
|-----------|-----------|-------------------------|-------------|----------------|-------------|--------|-----------|
| | | Inscribed bore diameter | | Outer diameter | | Length | |
| | | dr | Tolerance | D | Tolerance | L | Tolerance |
| LM 3L | 4 | 3 | 0 -0.010 | 7 | 0 -0.013 | 19 | 0 -0.3 |
| LM 4L | 4 | 4 | | 8 | | 23 | |
| LM 5L | 4 | 5 | | 10 | | 29 | |
| LM 6L | 4 | 6 | | 12 | | 35 | |
| LM 8L | 4 | 8 | | 15 | | 45 | |
| LM 10L | 4 | 10 | | 19 | 55 | | |
| LM 12L | 4 | 12 | | 21 | 0 -0.016 | 57 | |
| LM 13L | 4 | 13 | | 23 | 61 | | |
| LM 16L | 5 | 16 | | 28 | 70 | | |
| LM 20L | 5 | 20 | | 32 | 80 | | |
| LM 25L | 6 | 25 | 0 -0.012 | 40 | 0 -0.019 | 112 | 0 -0.4 |
| LM 30L | 6 | 30 | 45 | 123 | | | |
| LM 35L | 6 | 35 | 52 | 0 | 135 | | |
| LM 40L | 6 | 40 | 0 -0.015 | 60 | 0 -0.022 | 154 | |
| LM 50L | 6 | 50 | 80 | 192 | | | |
| LM 60L | 6 | 60 | 0 -0.020 | 90 | 0 -0.025 | 211 | |

Note) Since this model contains a synthetic resin retainer, do not use it at temperature exceeding 80°C.
If requiring a type equipped with a seal, indicate it when placing an order.

(Example) LM13L UU

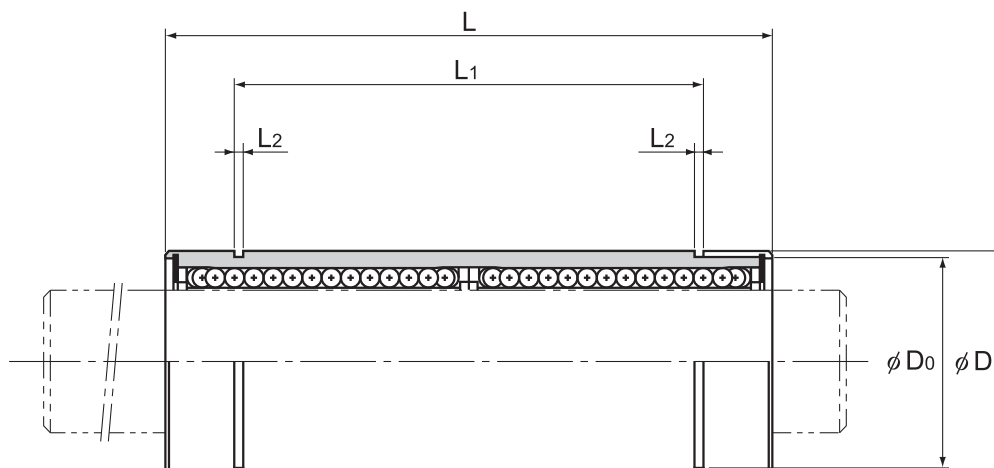
└─── Seal attached on both ends of the nut

A4-50

THK

Download data by searching for the corresponding model number on the Technical Support site.

<https://tech.thk.com>



Unit: mm

| dimensions | | | | | Eccentricity (max) μm | Radial clearance tolerance μm | Basic load rating | | Mass g |
|------------|-----------|-----------|-------|--------|--|---|-------------------|------|-----------|
| L_1 | Tolerance | L_2 | D_0 | C N | | | C_0 N | | |
| — | — | — | — | 10 | -2 | 139 | 216 | 3 | |
| — | — | — | — | 10 | -3 | 139 | 254 | 4 | |
| 20 | 0 -0.3 | 1.1 | 9.6 | 10 | -3 | 263 | 412 | 10 | |
| 27 | | 1.1 | 11.5 | 15 | -5 | 324 | 529 | 15 | |
| 35 | | 1.1 | 14.3 | 15 | -5 | 431 | 784 | 26 | |
| 44 | | 1.3 | 18 | 15 | -5 | 588 | 1100 | 48 | |
| 46 | | 1.3 | 20 | 15 | -5 | 657 | 1200 | 56 | |
| 46 | | 1.3 | 22 | 15 | -7 | 814 | 1570 | 75 | |
| 53 | | 1.6 | 27 | 15 | -7 | 1230 | 2350 | 147 | |
| 61 | | 1.6 | 30.5 | 20 | -9 | 1400 | 2750 | 163 | |
| 82 | | 0 -0.4 | 1.85 | 38 | 20 | -9 | 1560 | 3140 | 397 |
| 89 | | | 1.85 | 43 | 20 | -9 | 2490 | 5490 | 434 |
| 99 | 2.1 | | 49 | 25 | -13 | 2650 | 6270 | 696 | |
| 121 | 2.1 | | 57 | 25 | -13 | 3430 | 8040 | 1087 | |
| 148 | 2.6 | | 76.5 | 25 | -13 | 6080 | 15900 | 2770 | |
| 170 | 3.15 | | 86.5 | 25 | -16 | 7650 | 20000 | 3340 | |

Note) A stainless steel type (LM3ML to 30ML) is also available. Contact THK for details.

If an oil hole is required, this can be indicated by appending "OH" to the end of the model number.

For further information, contact THK.

Options ⇒ **A4-119****THK** **A4-51**