

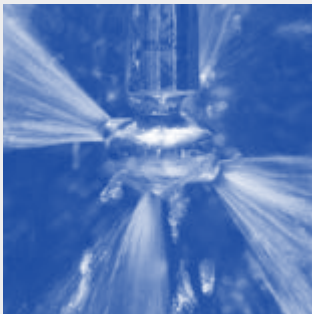


# Rotating cleaning nozzle »Whirly 2« Series 5W9

NEW

## Series 5W9

Popular and proven:  
the design of the Whirly 2.  
It generates effective flat jets,  
offers various connection op-  
tions and is available in a very  
wide range of flow rates. It is  
also available in an ATEX-ap-  
proved version and in a range  
of versions with different  
spray angles.



Function video  
[www.lechler.com/de-en/medialibrary](http://www.lechler.com/de-en/medialibrary)  
Or scan the QR Code.



	Max. tank diameter [m]	0	1	2	3	4	5	6	7	8
--	------------------------	---	---	---	---	---	---	---	---	---

**Materials**  
316L, PEEK

**Max. temperature**  
140 °C

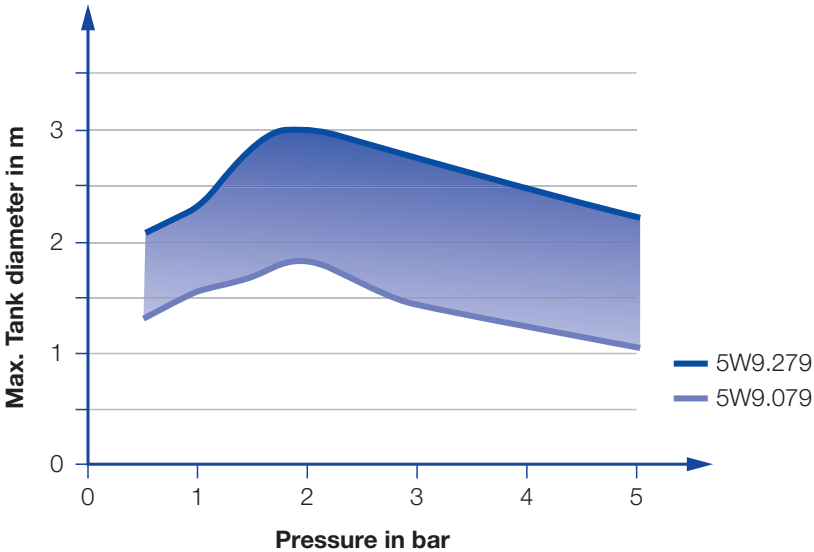
**Recommended operating pressure**  
2 bar

**Installation**  
Operation in every direction is possible

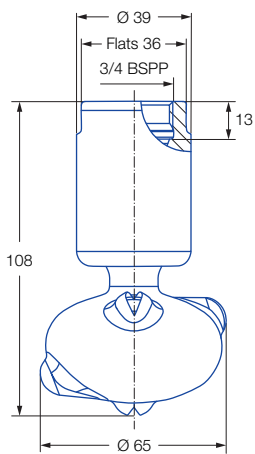
**Filtration**  
Line strainer with a mesh size of 0.1 mm/170 Mesh

**Bearing**  
Double ball bearing made of 316L

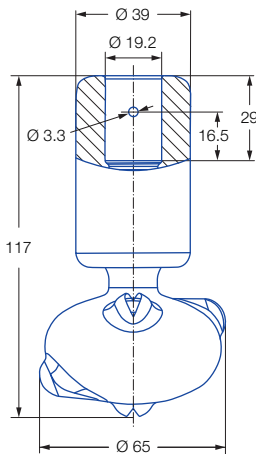
**Adapter**  
3/4 BSPP  
is compatible with HygienicFit



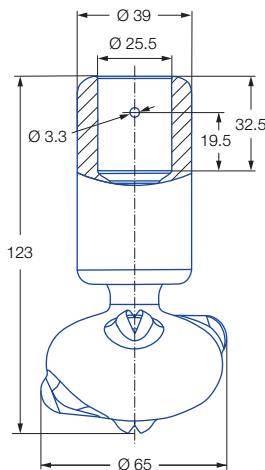
Overview of the maximum tank diameter, depending upon the pressure of series 5W9



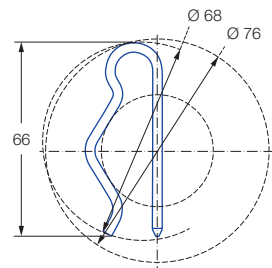
Female thread



Dimensions of the 3/4" slip-on connection according to ASME-BPE (OD-tube)



Dimensions of the 1" slip-on connection according to ASME-BPE (OD-tube)



Dimensions slip-on connection top-view

<div>Spray angle</div> <div></div>	Ordering no.				E Ø [mm]	V̇ [l/min]				Max. tank diameter [m]
	Type	Code				p [bar] (p <sub>max</sub> = 6 bar)				
		3/4 BSPP	3/4" Connection	1" Connection		1	2	3	at 40 psi [US gal./ min]	
<div>270°</div> <div></div>	5W9.075.1Y	AL	TF07	TF10	2.0	34	48	59	15	1.8
	5W9.145.1Y	AL	TF07	TF10	2.8	50	71	87	22	2.1
	5W9.195.1Y	AL	TF07	TF10	3.3	69	97	119	30	2.6
<div>270°</div> <div></div>	5W9.076.1Y	AL	TF07	TF10	2.0	34	48	59	15	1.8
	5W9.106.1Y	AL	TF07	TF10	2.5	41	58	71	18	2.1
	5W9.196.1Y	AL	TF07	TF10	3.4	69	97	119	30	2.6
<div>360°</div> <div></div>	5W9.079.1Y	AL	TF07	TF10	1.6	34	48	59	15	1.8
	5W9.149.1Y	AL	TF07	TF10	2.4	50	71	87	22	2.1
	5W9.199.1Y	AL	TF07	TF10	3.0	69	97	119	30	2.6
	5W9.279.1Y	AL	TF07	TF10	3.5	103	145	178	45	3.0

E = narrowest free cross-section · NPT on request

The maximum tank diameter shown above applies for the recommended operating pressure and is indicative only. The cleaning result is also affected by the type of soiling.

### Information on operation

- Operation with compressed air only for short-term usage. Operation above the recommended operating pressure has negative effects on the cleaning result and wear.

### Slip-on information

- Split pin made of 316L SS is included (Ordering no.: 095.022.1Y.06.72.0).
- Depending on diameter of the adapter the flow rate can increase due to leakage between connecting pipe and rotating cleaning nozzle.
- Minimum insertion diameter (with mounted split pin) is 68 mm.

Example of ordering with ATEX approval.  
FDA and (EC) 1935/2004 conform.



Unit group/category/zones:

- ⊗ II 1G Ex h IIB T6...T3 Ga
- ⊗ II 1D Ex h IIIC T85 °C...T170 °C Da



Ordering Type + Connection = Ordering no.  
example: 5W9.075.1Y.XX.EX + AL = 5W9.075.1Y.AL.EX

**Attention:** for the ATEX version of the slip-on connection the code for the connection changes. Ordering example for connection TF.07: 5W9.075.1Y.T2.EX/ ordering example for connection TF.10: 5W9.075.1Y.T3.EX

Example of ordering with FDA  
and (EC) 1935/2004 conformity.



All Materials are suitable for  
contact with food.

Ordering Type + Connection = Ordering no.  
example: 5W9.075.1Y.XX + AL = 5W9.075.1Y.AL