

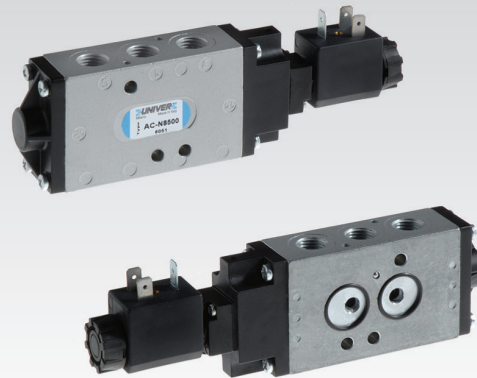
AC-N

NAMUR valve

- Mixed commutation system (spool-poppet)
- High flow rate
- Quick response time
- High cycle rates
- Control: pneumatic, electric
- Suitable for rotating pneumatic actuators used in industrial plants for the distribution of fluids
- NAMUR VDI/VDE 3845 interface

Available ATEX version upon request

CE Ex II 2Gc IIC T5 II 2Dc T100°C



TECHNICAL CHARACTERISTICS

Ambient temperature	-10 ÷ 45 °C
Fluid temperature	-10 ÷ 50 °C
Fluid	50 µm filtered air, with or without lubrication
Commutation system	poppet mixed
Ways/Positions	5/2 (3/2*)
Pressure	10 bar max
Control	pneumatic, electric
Return	pneumomechanical spring, pneumatic, electric
Connections	1-3-5: G1/4 2-4: NAMUR interface
Nominal Ø	8 mm
Nominal flow rate	1200 NI/min

CONSTRUCTIVE CHARACTERISTICS

Valve body	zamak
Seals	nitrile rubber, polyurethane
Actuators	technopolymer
Spool	aluminium

ELECTRIC CHARACTERISTICS

Electropilot	AA series
Coil	U1-U3
Power consumption	3,5 W (DC) - 5 VA (AC)
Connector	AM-5110
Voltage	12 V DC - 24 V DC - 24 V AC - 110 V AC - 230 V AC
Manual override	impulse screw - 2 positions

* = This can be achieved with isolating disc, standard supplied

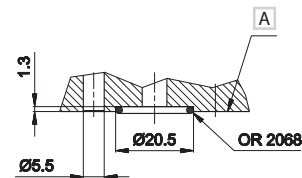


MIXED
for heavy applications

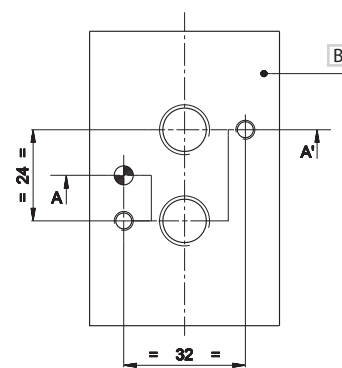
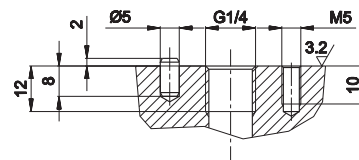


SPOOL
for all applications

NAMUR interface



A-A' section



A Electrovalve surface

B Flange surface



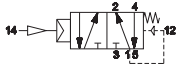
Upon request:
Components suitable for use
in potentially explosive environments.
Group II Zona 2G e 22D

Single pneumatic impulse

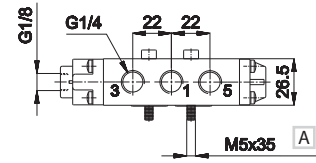
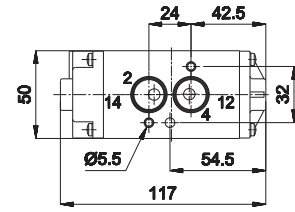


A ISO 4762

- 1 = Supply port
- 2 - 4 = Use
- 3 - 5 = Exhaust
- 14 = Control
- 12 = Return



5/2	Control	Return	Pressure	Response Time (ms)		Weight	Part no.
	14	12	bar	En.	De-en.	Kg	
	pneumatic amplified	pneumo mechanical spring	2,3÷10	10	10	0,564	AC-N8100

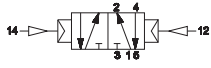


Double pneumatic impulse

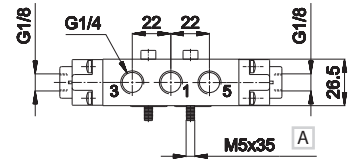
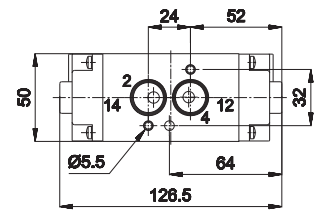


A ISO 4762

- 1 = Supply port
- 2 - 4 = Use
- 3 - 5 = Exhaust
- 14 = Control
- 12 = Return



5/2	Control	Return	Pressure	Response Time (ms)		Weight	Part no.
	14	12	bar	En.	De-en.	Kg	
	pneumatic amplified	pneumatic amplified	0,8÷10	6	6	0,564	AC-N8120



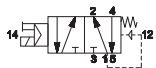
Single electric impulse



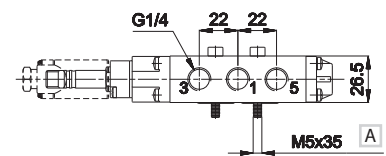
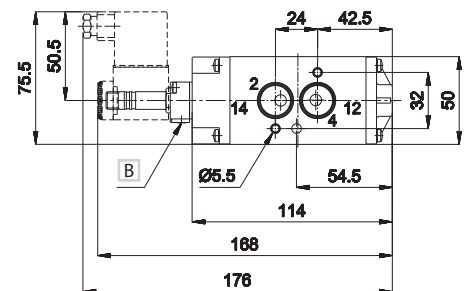
A ISO 4762

B Manual override

- 1 = Supply port
- 2 - 4 = Use
- 3 - 5 = Exhaust
- 14 = Control
- 12 = Return



5/2	Control	Return	Pressure	Response Time (ms)		Weight	Part no.
	14	12	bar	En.	De-en.	Kg	
	electric amplified	pneumo mechanical spring	2,3÷10	22	22	0,6	AC-N8500



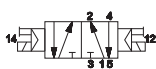
Double electric impulse



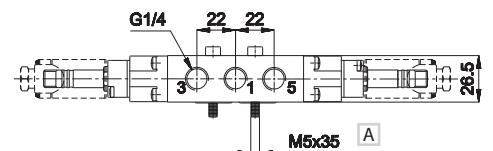
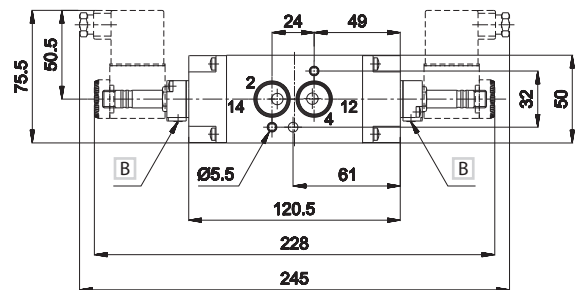
A ISO 4762

B Manual override

- 1 = Supply port
- 2 - 4 = Use
- 3 - 5 = Exhaust
- 14 = Control
- 12 = Return



5/2	Control	Return	Pressure	Response Time (ms)		Weight	Part no.
	14	12	bar	En.	De-en.	Kg	
	electric amplified	electric amplified	0,8÷10	14	14	0,636	AC-N8520



Upon request 3/2 version
Electrovalves are supplied without coil, connector and locking ring

3