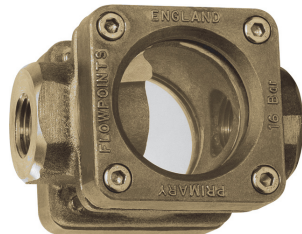


## Flow Indicator FH-...GR



- No moving parts internally
- Installation location as desired
- For heavily soiled or coloured fluids
- Double-sided large-surface window
- Natural glass

### Characteristics

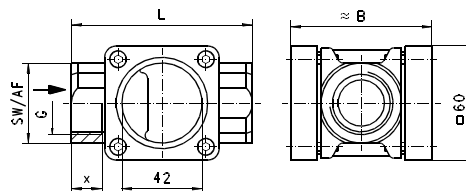
Devices made from solid red bronze, where the medium can be visually examined through the sight glass (fluid level, colour, bubbles,...).

### Technical data

<b>Nominal width</b>	DN 15..25
<b>Process connection</b>	female thread G 1/2..G 1
<b>Q<sub>max.</sub></b>	G 1/2 - 25 l/min G 3/4 - 45 l/min G 1 - 65 l/min
<b>Pressure resistance</b>	PN 16 bar
<b>Medium temperature</b>	0..100 °C water -20..+200 °C oils
<b>Ambient temperature</b>	-20..+100 °C
<b>Materials medium-contact</b>	Rg 5, CW614N, soda lime glass, Klingersil C4400
<b>Medium</b>	water, oils
<b>Weight</b>	see table "Dimensions and weights"
<b>Installation location</b>	as desired

### Dimensions and weights

G	Types	L	B	SW	X	Weight kg
G 1/2	FH-015GR	85	68	38	14	1.20
G 3/4	FH-020GR					1.10
G 1	FH-025GR	95	74	42	16	1.25



### Ordering code

FH - 1. 2. 3.  
G R

<b>1. Nominal width</b>	
015	DN 15 - G 1/2
020	DN 20 - G 3/4
025	DN 25 - G 1
<b>2. Process connection</b>	
G	female thread
<b>3. Connection material</b>	
R	red bronze