

# PÁDLOVÝ HLÍDAČ PRŮTOKU UBX

## Flow Switch UBX

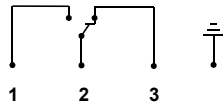
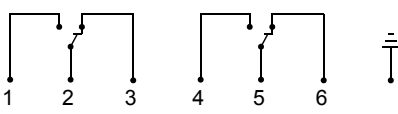


- Suitable for nominal sizes DN 65, DN 80 und DN 100
- Mikroswitch with bi-level gold contact
- System connection with oval flange or male thread R 1"
- For temperature range -40 °C bis +140 °C

### Characteristics

The devices work via the principle of a bellow-supported paddle which triggers directly a microswitch in case of flow.

### Technical Data

<b>Switch</b>	Mikroswitch
<b>Nominal diameter</b>	DN 65, DN 80, DN 100
<b>Process connection</b>	Oval flange or male thread R1"
<b>Adjustable range</b> (for decreasing flow)	DN 65: 6.0 m³/h ± 2.0 DN 80: 10.5 m³/h ± 2.5 DN 100: 20.5 m³/h ± 3.0
<b>Q<sub>max.</sub></b> (recommended)	DN 65: 33 m³/h DN 80: 45 m³/h DN 100: 65 m³/h (all values for v = 2 m/s)
<b>Pressure rate</b>	PN 16 bar
<b>Medium temperature</b>	-40...+140 °C (no superheated steam)
<b>Ambient temperature</b>	-40...+90 °C
<b>Media</b>	Water, mineral oil, silicone oil, ester oil
<b>Connection diagram</b>	<p>Single changeover contact (wiring 0.371-2)</p>  <p>Double changeover contact (wiring 0.409-1)</p> 

Switching voltage/ Switching current			A max. ohmic	A max. inductive
	max.	250 V AC/DC	6 A	1,5 A
		125 V AC/DC	6 A	2 A
		24 V DC	6 A	5 A
		1 2 V DC	6 A	6 A
			A min.	
min.	4 V	1 mA		
Protection class	2 – Safety insulation			
Ingress protection	IP 65 / IP 67 (When using a permissible supply cable)			
Electrical connection	Cable gland M16x1,5			
Materials with medium contact	Brass version: CW614N vernickelt, 1.4305, 1.4310, 1.4541, FVMQ		Stainless steel version 1.4305, 1.4310, 1.4541, FVMQ	
Housing material	Die-cast aluminium			
Weight	1,3 kg			
Mounting position	Standard: horizontal flow; switching unit not recommended underneath; other installation positions are possible; the installation position affects the switching point and range.			

### Dimensions

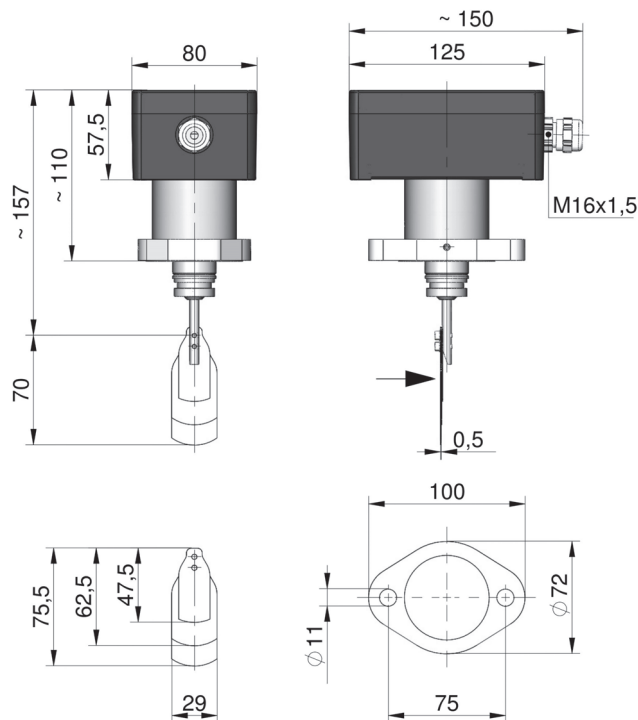


Figure shows flow switch for DN 65 with oval flange!

**Attention! Process gasket not included !**

# PÁDLOVÝ HLÍDAČ PRŮTOKU UBX



HENNlich

MERES

## Handling and operation

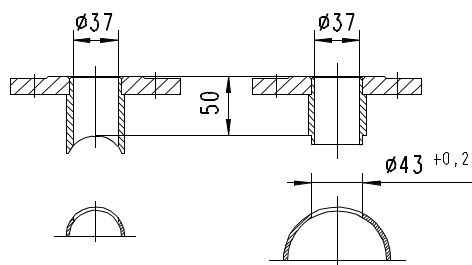
### Notes

- Attention! Paddle fixing unsecured. For critical conditions (e.g. vibration), fit a bolted fixing.
- Include straight calming section of 10 x DN in inlet and outlet
- If the media are dirty, install a filter.
- It must be ensured that the values given for voltage, current, and power are not exceeded.
- When switched on, a load must be connected in series.
- The electrical details apply to ohmic loads.  
Capacitive and inductive loads must be operated using a protective circuit..

### Installation recommendation

#### Flange design

Use a tube with standard wall thickness as per DIN 2448.



## Ordering code

UBX - 1. 2. 3.  
[ ] [ ] [ ]

1. Process connection	
025H	Male thread R1"
032E	Flange
2. Anschlusswerkstoff	
M	Brass
K	Stainless steel
3. Contacts	
S	Single changeover contact
D	Double changeover contact

### Options

- Adjustment
- Optional temperature range -50 °C ... +50 °C
- Other process connections on request

### Ordering information

- Specify direction of flow, medium, and switching range.
- For oils, state viscosity, temperature and designation (e.g. ISO VG 68) (enquire about range).