



DIGITAL Meter

Flow rate **35 l/min**

Flow rate **70 l/min**



Flow rate **40 l/min**

RAASM's digital meters, besides gauging the liquid delivered, can show instant flow rates, provide a reset total and allow the setting of different units of measurement.

RAASM's digital meters are suitable for a wide variety of fluids, from low to medium to high viscosities, including lubricants, diesel fuel, antifreeze, window wash liquid and other fluids compatible with the material of the meter.



Not type-approved for public use

| | oil and similar products | oil and similar products | antifreeze and windshield washing liquid |
|------------------------------------------------------------------------------------------------------------------------|---------------------------------------|---------------------------------------|------------------------------------------|
| Article | 37780 | 37781 | 37785 |
| Flow rate l/min | 35 | 70 | 40 |
| Compatible fluids | Oil and similar products, diesel fuel | Oil and similar products, diesel fuel | Antifreeze and windshield washing liquid |
| Body's material | Aluminium | Aluminium | oxidized aluminium |
| Gear's material | POM | POM | PVDF |
| Inlet | F 1/2" BSP | F 3/4" BSP | F 1/2" BSP |
| Outlet | F 1/2" BSP | F 3/4" BSP | F 1/2" BSP |
| Max operating pressure bar | 70 | 70 | 70 |
| Burst pressure bar | ± 200 | ± 200 | ± 200 |
| Accuracy | ± 0,3 % | ± 0,5 % | ± 0,5 % |
| Net weight kg | 0,485 | 0,790 | 0,485 |
| Packing  N° - m ³ | 1 - 0,0015 | 1 - 0,0018 | 1 - 0,0015 |
| Gross weight  kg | 0,85 | 1 | 0,85 |
| Dimensions (A - B - C) mm | 94 - 90 - 55 | 94 - 92 - 77 | 94 - 90 - 55 |



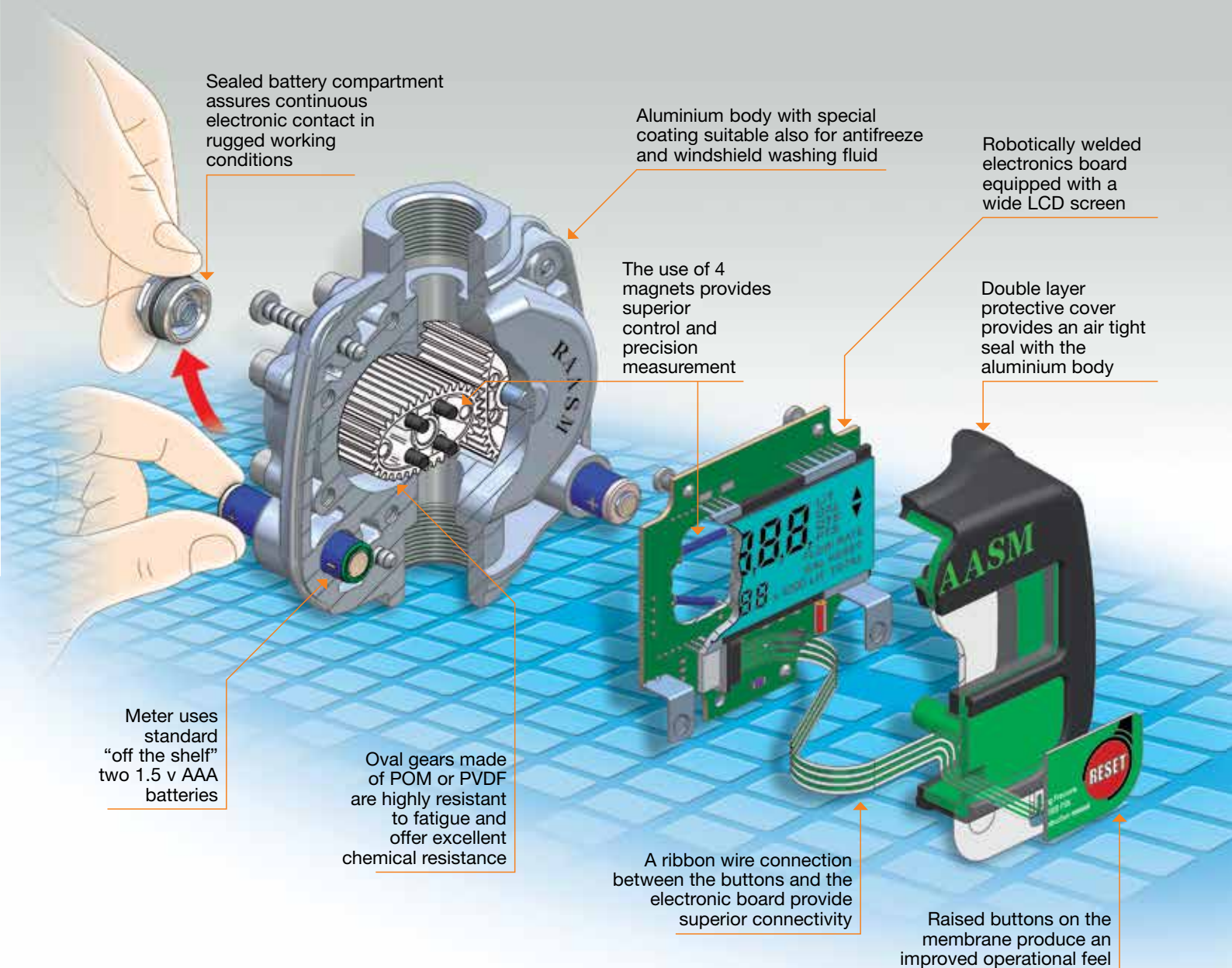
HENNLICH ŽIJEME TECHNIKOU

o.z. HENNLICH CEMA-TECH,
Dolní 183/30, 591 01 Žďár nad Sázavou

Telefon: +420 566 630 524
E-mail: cema-tech@hennlich.cz

www.hennlich.cz/cema-tech

TECHNICAL Features



PERFORMANCE

- Precision $\pm 0,3 \%$
- Repeatability 0,2 %
- Pressure loss $< 0,5$ bar at max. flow rate



Series 1/2" 30 TP



Series 1/2" 40 AL



Series 1/2" 40 AP



| Series | | 1/2" 30 TP | 1/2" 40 AL | 1/2" 40 AP | 1/2" 65 AP | 3/4" 70 AP | 3/4" 85 AP |
|--------------|-------|------------|------------|------------|------------|------------|------------|
| Flow rate | l/min | 30 | 40 | 40 | 65 | 70 | 85 |
| Max pressure | bar | 60 | 70 | 70 | 100 | 100 | 100 |
| Inlet union | | F 1/2" G | F 1/2" G | F 1/2" G | F 1/2" G | F 3/4" G | F 3/4" G |
| Seals | | NBR | Viton | Viton | Viton | Viton | Viton |



**Gun for oil
and similar**

Series 1/2" 65 AP



Series 3/4" 70 AP



Series 3/4" 85 AP





GUN for oil and similar Series 1/2" - 30TP

Art. 38023
Grip in technopolymer for oil gun
equipped with F 1/2" inlet swivel joint, filter, F 3/8" outlet



Art. 33120
Oil gun equipped with
F 1/2" inlet swivel joint, filter, high flow rate rigid terminal

Art. 37730
Oil gun with digital litre-counter
Art. 37780 equipped with
F 1/2" inlet swivel joint, filter, high flow rate rigid terminal



Art. 38024
Oil gun equipped with
F 1/2" inlet swivel joint, filter, rigid terminal
and semiautomatic drip-catcher nozzle ø 16 mm

Art. 37729
Oil gun with digital litre-counter
Art. 37780 equipped with
F 1/2" inlet swivel joint, filter, rigid terminal
and semiautomatic drip-catcher nozzle ø 16 mm



Art. 38025
Oil gun equipped with
F 1/2" inlet swivel joint, filter, flexible terminal
and semiautomatic drip-catcher nozzle ø 16 mm

Art. 37728
Oil gun with digital litre-counter
Art. 37780 equipped with
F 1/2" inlet swivel joint, filter, flexible terminal
and semiautomatic drip-catcher nozzle ø 16 mm





GUN

for oil and similar Series 1/2" - 40AL - 40AP

Art. 38020

Grip in aluminium for oil gun equipped with F 1/2" inlet swivel joint, filter, F 3/8" outlet

Art. 37740

Grip in aluminium for oil gun equipped with F 1/2" inlet swivel joint, filter, F 3/8" outlet, lever locking button



lever locking button



Art. 33121

Oil gun equipped with F 1/2" inlet swivel joint, filter, high flow rate rigid terminal

Art. 37743

Oil gun equipped with F 1/2" inlet swivel joint, filter, high flow rate rigid terminal, lever locking button

Art. 37760

Oil gun with digital litre-counter
Art. 37780 equipped with F 1/2" inlet swivel joint, filter, high flow rate rigid terminal



Art. 38021

Oil gun equipped with F 1/2" inlet swivel joint, filter, rigid terminal and semiautomatic drip-catcher nozzle ø 16 mm

Art. 37742

Oil gun equipped with F 1/2" inlet swivel joint, filter, rigid terminal, semiautomatic drip-catcher nozzle ø 16 mm and lever locking button

Art. 37759

Oil gun with digital litre-counter
Art. 37780 equipped with F 1/2" inlet swivel joint, filter, rigid terminal, semiautomatic drip-catcher nozzle ø 16 mm



Art. 38022

Oil gun equipped with 1/2" F inlet swivel joint, filter, flexible terminal and semiautomatic drip-catcher nozzle ø 16 mm

Art. 37741

Oil gun equipped with F 1/2" inlet swivel joint, filter, flexible terminal, semiautomatic drip-catcher nozzle ø 16 mm and lever locking button

Art. 37758

Oil gun with digital litre-counter
Art. 37780 equipped with F 1/2" inlet swivel joint, filter, flexible terminal and semiautomatic drip-catcher nozzle ø 16 mm

Art. 37786

Oil gun with digital litre-counter
Art. 37780 equipped with F 1/2" inlet swivel joint, filter, flexible terminal, semiautomatic drip-catcher nozzle ø 16 mm and lever locking button





GUN for oil and similar Series 1/2" - 65AP

Art. 37750

Grip in aluminium for oil gun equipped with **F 1/2"** inlet swivel joint, filter, **F 1/2"** outlet and lever locking button



Coloured caps supplied for all the range

lever locking button



Art. 33140

High flow rate oil gun equipped with **F 1/2"** inlet swivel joint, filter, high flow rate rigid terminal and lever locking button

Art. 37796

High flow rate oil gun with digital litre-counter Art. 37780 equipped with **F 1/2"** inlet swivel joint, filter, high flow rate rigid terminal and lever locking button



Art. 37752

Oil gun equipped with **F 1/2"** inlet swivel joint, filter, rigid terminal, semiautomatic drip-catcher nozzle \varnothing 21 mm and lever locking button

Art. 37795

Oil gun with digital litre-counter Art. 37780 equipped with **F 1/2"** inlet swivel joint, filter, rigid terminal, semiautomatic drip-catcher nozzle \varnothing 21 mm and lever locking button



Art. 37751

Oil gun equipped with **F 1/2"** inlet swivel joint, filter, flexible terminal, semiautomatic drip-catcher nozzle \varnothing 21 mm and lever locking button



Art. 37794

Oil gun with digital litre-counter Art. 37780 equipped with **F 1/2"** inlet swivel joint, filter, flexible terminal, semiautomatic drip-catcher nozzle \varnothing 21 mm and lever locking button





GUN for oil and similar Series 3/4" - 70AP

Art. 37775

High delivery oil grip equipped with **F 3/4"** inlet swivel joint, filter, **F 1/2"** outlet and lever locking button



Coloured caps supplied for all the range

lever locking button



Art. 37778

High flow rate oil gun equipped with **F 3/4"** inlet swivel joint, filter, high flow rate rigid terminal and lever locking button

Art. 37799

High flow rate oil gun with digital litre-counter Art. 37781 equipped with **F 3/4"** inlet swivel joint, filter, high flow rate rigid terminal and lever locking button



Art. 37777

High flow rate oil gun equipped with **F 3/4"** inlet swivel joint, filter, rigid terminal 45°, semiautomatic drip-catcher nozzle \varnothing 35 mm and lever locking button

Art. 37798

High flow rate oil gun with digital litre-counter Art. 37781 equipped with **F 3/4"** inlet swivel joint, filter, rigid terminal 45°, semiautomatic drip-catcher nozzle \varnothing 35 mm and lever locking button



Art. 37776

High flow rate oil gun equipped with **F 3/4"** inlet swivel joint, filter, flexible terminal, semiautomatic drip-catcher nozzle \varnothing 35 mm and lever locking button



Art. 37797

High flow rate oil gun with digital litre-counter Art. 37781 equipped with **F 3/4"** inlet swivel joint, filter, flexible terminal, semiautomatic drip-catcher nozzle \varnothing 35 mm and lever locking button





GUN

for oil and similar Series 3/4" - 85AP

Art. 33150

High delivery oil grip equipped with F 3/4" inlet swivel joint, filter, F 3/4" outlet and lever locking button

lever locking button

Art. 33153

High delivery oil gun grip equipped with F 3/4" inlet swivel joint, filter, lever locking button, rigid terminal with free outlet

Art. 33148

High delivery oil gun grip with digital litre-counter Art. 37781 equipped with F 3/4" inlet swivel joint, filter, lever locking button, rigid terminal with free outlet

Art. 33152

High delivery oil gun grip equipped with F 3/4" inlet swivel joint, filter, lever locking button, rigid terminal and drip-catcher nozzle ø 35 mm

Art. 33147

High delivery oil gun grip with digital litre-counter Art. 37781 equipped with F 3/4" inlet swivel joint, filter, lever locking button, rigid terminal and drip-catcher nozzle ø 35 mm

Art. 33151

High delivery oil gun grip equipped with F 3/4" inlet swivel joint, filter, lever locking button, flexible terminal and drip-catcher nozzle ø 35 mm

Art. 33146

High delivery oil gun grip with digital litre-counter Art. 37781 equipped with F 3/4" inlet swivel joint, filter, lever locking button, flexible terminal and drip-catcher nozzle ø 35 mm



GUN

for windshield washing liquid and antifreeze

Art. 37785
Digital meter for windshield washing liquid
and antifreeze, inlet and outlet F 1/2" BSP



Antifreeze gun Series 1/2" - 40AL

Art. 37764
Antifreeze gun with digital
litre-counter Art. 37785 equipped
with F 1/2" inlet swivel joint, filter,
high flow rate rigid terminal

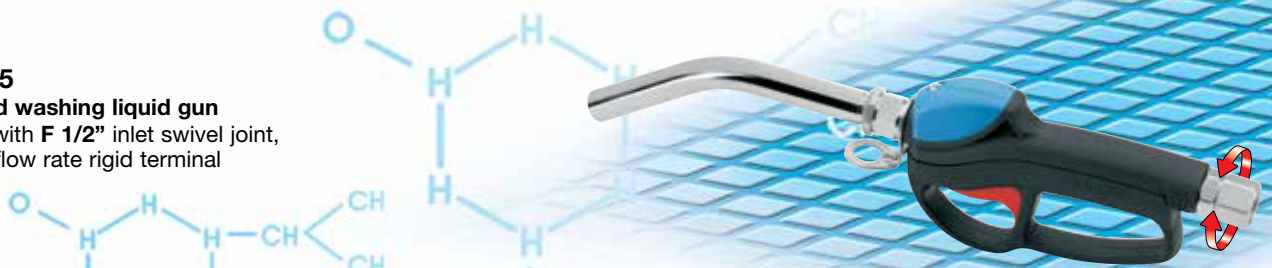


Art. 37762
Antifreeze gun with digital
litre-counter Art. 37785 equipped with
F 1/2" inlet swivel joint, filter, flexible terminal
and semiautomatic drip-catcher nozzle \varnothing 16 mm



Windshield washing liquid gun Series 1/2" - 40AN

Art. 33445
Windshield washing liquid gun
equipped with F 1/2" inlet swivel joint,
filter, high flow rate rigid terminal



Art. 33446
Windshield washing liquid gun
with digital litre-counter Art. 37785
equipped with F 1/2" inlet swivel joint, filter,
high flow rate rigid terminal





Gun for oil and similar S. 1/2" - 30TP - 40AL - 40AP

Art. 38015
Semiautomatic
drip-catcher nozzle ø 10 mm

Art. 38016
Semiautomatic
drip-catcher nozzle ø 16 mm

Art. 38017
Semiautomatic
drip-catcher nozzle ø 8 mm

Art. 38010
Flexible terminal with
semiautomatic
drip-catcher nozzle ø 16 mm

Art. 38011
Rigid terminal with
semiautomatic
drip-catcher nozzle ø 16 mm

Art. 38013
Rigid terminal 45°
with semiautomatic drip-catcher
nozzle ø 16 mm

Art. 38012
High delivery rigid
terminal with free outlet ø 20 mm

Art. 38018
Curved semiautomatic
drip-catcher ø 8 mm

Art. 38014
Flexible terminal with
semiautomatic
curved-drip-catcher nozzle ø 8 mm

Art. 38023
Grip in technopolymer with
inlet swivel joint F 1/2"

Art. 38020
Grip in aluminium alloy
with inlet swivel
joint F 1/2"

Art. 37740
Grip in aluminium alloy
with F 1/2" inlet swivel joint
and lever locking button

Art. 38062
Swivel
joint for
oil gun,
M/F 1/2"

Gun for oil and similar Series 1/2" - 65AP

Art. 38034
Semiautomatic
drip-catcher nozzle ø 21 mm

Art. 38035
Semiautomatic
drip-catcher nozzle ø 27 mm

Art. 38029
Flexible terminal with
semiautomatic
drip-catcher nozzle ø 21 mm

Art. 38030
Rigid terminal with
semiautomatic
drip-catcher nozzle ø 21 mm

Art. 38031
Rigid terminal 45°
with semiautomatic
drip-catcher nozzle ø 21 mm

Art. 38032
High delivery rigid
terminal with free outlet ø 20 mm

Art. 37750
Grip in aluminium alloy
with inlet swivel joint F 1/2"
and lever locking button

Art. 38063
Swivel
joint for
oil gun,
M/F 1/2"



Gun for oil and similar Series 3/4" - 70AP - 85AP

Art. 38040
High delivery
semiautomatic
drip-catcher nozzle
ø 35 mm



Art. 38037
High delivery
flexible terminal
with semiautomatic
drip-catcher nozzle ø 35 mm



Art. 38038
High delivery rigid
terminal 45° with
semiautomatic drip-catcher
nozzle ø 35 mm



Art. 38039
High delivery rigid
terminal with
free outlet ø 26 mm



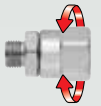
Art. 37775
Grip in aluminium alloy
with inlet swivel
joint F 3/4" and lever
locking button



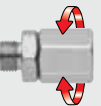
Art. 33150
Grip in aluminium alloy
with inlet swivel
joint F 3/4" and level
locking button



Art. 38066
Swivel
joint for
oil gun,
M/F 3/4"

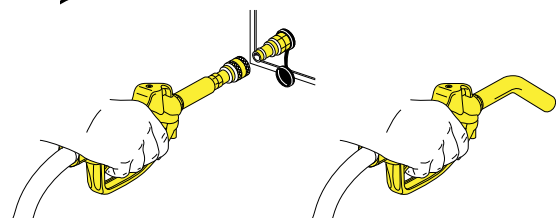
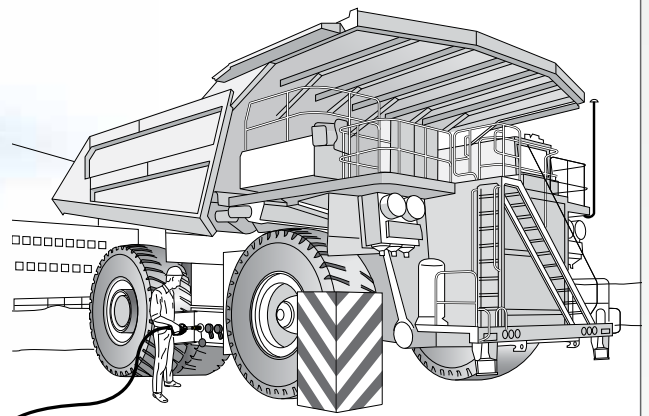


Art. 38065
Swivel joint for oil
gun, high delivery,
inlet M/F 3/4"

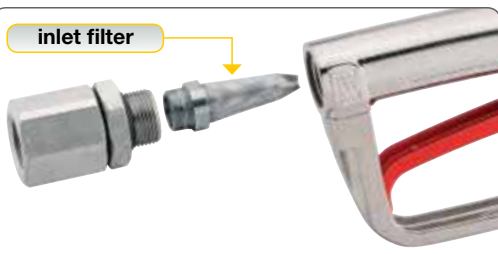


High delivery grip Series 3/4"

Example of used 3/4" oil gun with
quick coupler for tank refilling.



inlet filter



Inlet filter supplied with all our oil,
antifreeze, windshield liquid delivery gun.



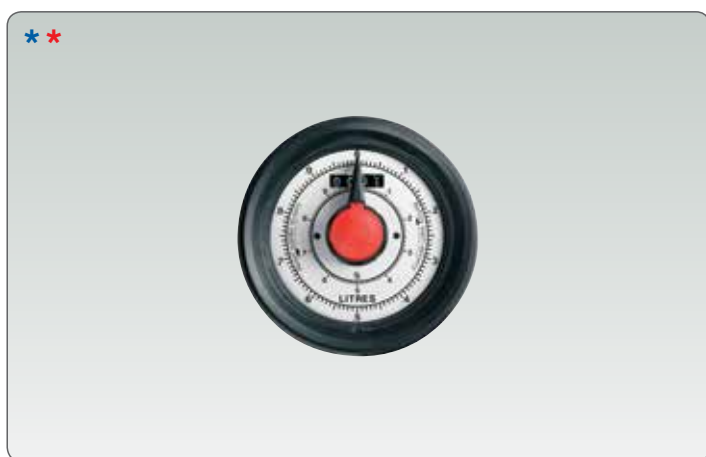
Accessories

digital meters and volumetric guns



Art. 37704
Digital dispensing oil gun with preselection,
equipped with:
- inlet swivel joint F 1/2"
- flexible terminal
- semiautomatic nozzle ø 16 mm

* not type-approved for public use
* articles not manufactured by us



Art. 37701
Mechanical litre-counter (weight 1 Kg) for oil,
equipped with:
- connection F 1/2" x F 1/2"
- indicator 0-10 litres

* not type-approved for public use
* articles not manufactured by us



Art. 37703
Oil gun with mechanical litre-counter (Art. 37701),
equipped with:
- inlet swivel joint F 1/2"
- flexible terminal
- semiautomatic nozzle ø 16 mm

* not type-approved for public use
* articles not manufactured by us



Art. 33122
High delivery oil gun for transfer,
equipped with:
- F 3/4" inlet swivel joint (max 8 bar)
- rigid terminal with free outlet
Ideal for high deliveries in transferring oil, waste
oil and antifreeze liquid

Note: it is advisable to use it with hose 3/4" (Art. 997.505) and with pumps
R 1:1 (max 8 bar)

* articles not manufactured by us