

Multi-line automatic lubrication systems

Product catalogue 2023

INCL.
THE NEW
OCL-M CHAIN
LUBRICATION
SYSTEM

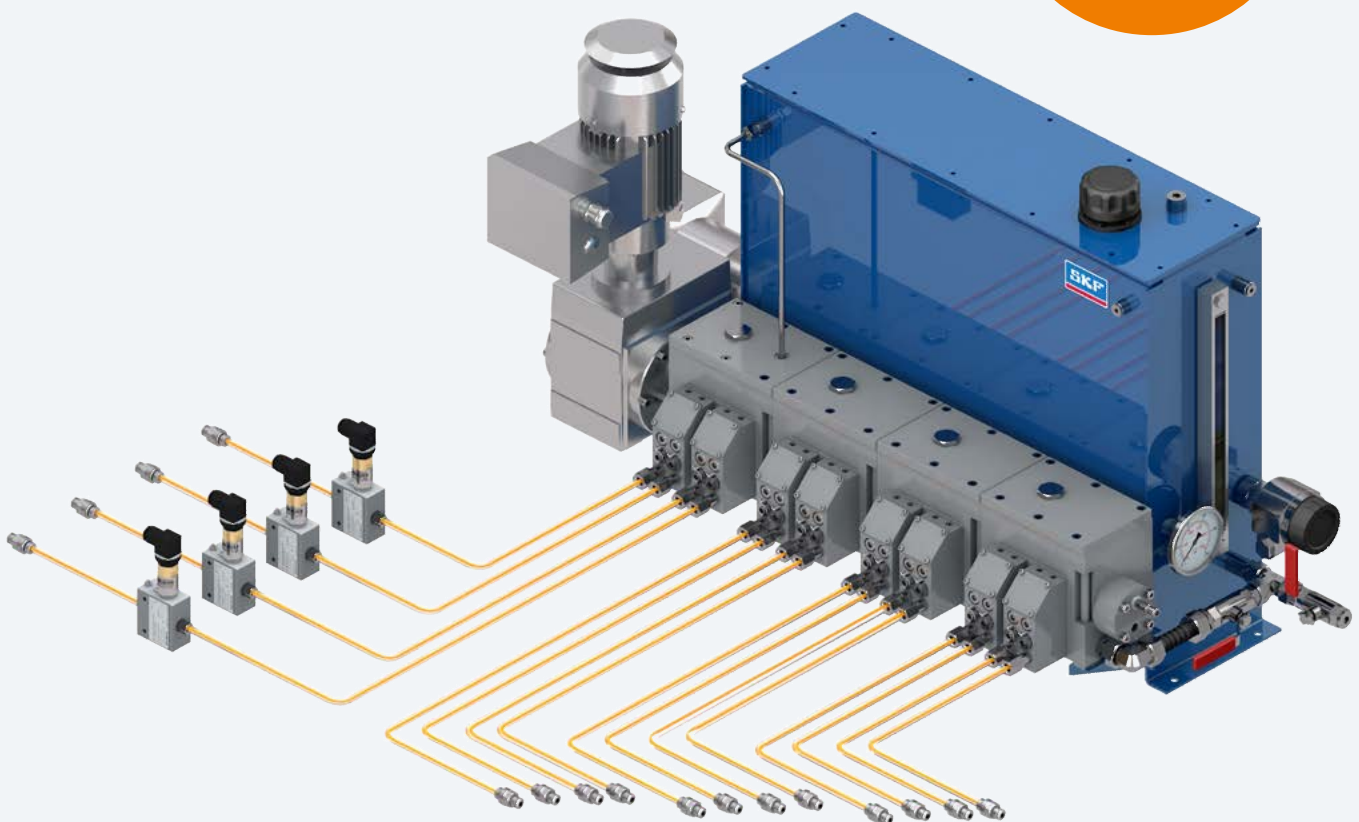


Table of contents

Electronic part library	4	Overview of multi-line grease pumps	33
Lubricants suitable for lubrication systems	5	PFHM-ATEX	34
Multi-line lubrication systems for oil	6	RA20/45	36
Multi-line lubrication systems for grease	8	P 205	38
		FF	40
Overview of multi-line oil pumps and pump units.	11	P 212	42
SP/G	12	P 215	44
OCL-M	14	FB/FB-XL	46
RA ... U	16	FB-XL	48
55i	18	P 230	50
JM	20		
PDYY, PDYC and PDYS	22	Overview of control units	53
PC	24	IGZ/EXZT	54
RA ... M/RA B	26	EOT - 2	56
SP/PFE	30	LMC2	57
		LMC301	58
		Overview of monitoring devices.	61
		SP/SFE 30	62
		EWT2A	63
		234-13161-5	64
		2340-00000108	65
		Index	66

Introduction 2

Pumps and pump units for oil 11

Pumps and pump units for grease 33

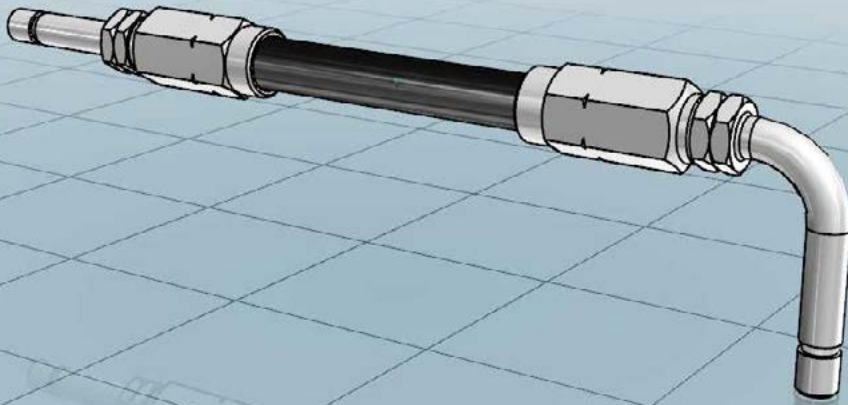
Control units. 53

Monitoring devices. 61



Electronic part library

CAD product data



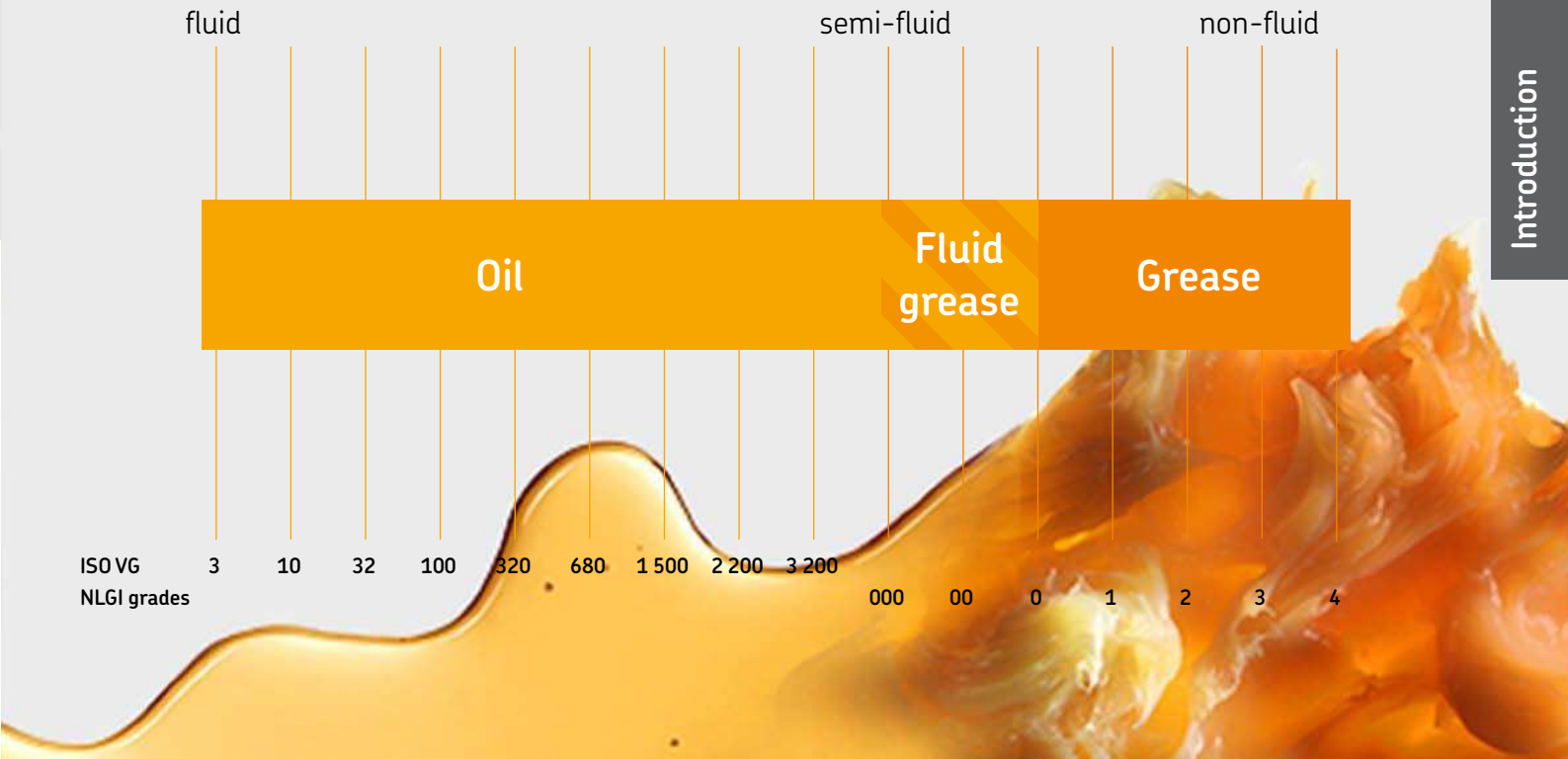
Find your parts online

3D CAD data, technical drawings and data sheets of SKF automatic lubrication system components are now available in native format in the online parts library. In addition to enjoying easy CAD downloads, you can configure more complex lubrication system products and integrate them into your design process – completely free of charge. Integrate CAD data seamlessly into your layout plans without any delay.



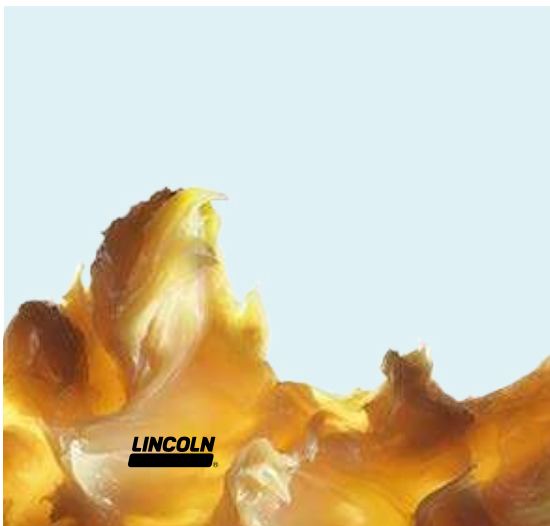
<https://skf-lubrication.partcommunity.com>

Lubricants suitable for lubrication systems



Oil and fluid grease

The viscosity is an expression of a fluid's internal friction. Oils are classified in ISO VG viscosity classes from 2 to 3 200. NLGI grade 000, 00 and 0 greases are called fluid greases. Different types of oils are available, including mineral oils, organic oils and synthetic oils. A compatibility check is recommended prior to using any oil with SKF lubrication systems.

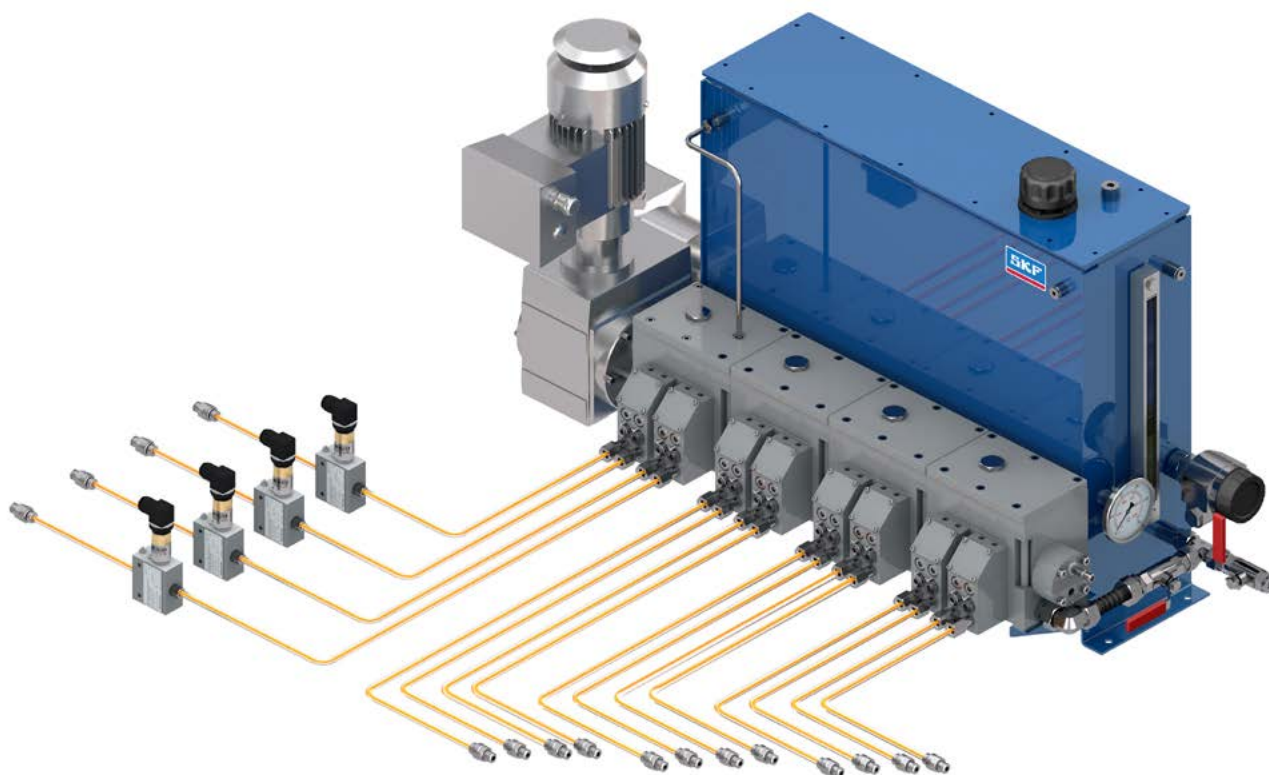


Grease

Greases are consistent lubricants (NLGI grade 1–6). They are soft to hard, triple-component mixtures of a base oil as the lubricating fluid, a thickening agent and additives. In most instances, greases of NLGI grade 1 up to 3 are suitable for use in a lubrication system. A compatibility check should be made prior to using any grease with SKF lubrication systems.

LINCOLN

Multi-line lubrication systems for oil



System description

SKF multi-line lubrication systems consist of the following components: a pump unit, control and monitoring devices, tubing and fittings. Multi-line pump units supply lubricant to lubrication points without extra metering dividers. Thus, each lubrication point has its own pumping element. The system design is simple, accurate and most reliable.

Multi-line pumps can be actuated mechanically, electrically or hydraulically. The easily exchangeable pumping elements are usually operated by eccentric cam. Depending on drive speed, gearbox ratio and selected pump element size, a delivery range from almost 0 to 227 cm³/min (0 to 13,85 in³/min) can be covered.

By selecting pumping elements with different piston diameters and/or stroke settings, an individual lubrication volume setting per pump outlet is possible. The potential number of outlets ranges from 1 to 28.

SKF multi-line oil pumps are designed for demanding applications in nearly all industries and for pressure requirements up to 4 000 bar (58 000 psi).

Advantages:

- Sturdy; durable pump series designed for 24/7 operation
- Simple; continuous lubrication without electrical cycle timers, in most cases
- Versatile; select individual pump element characteristics and oil reservoir size
- Precise; set the required stroke volume at the pumping element
- High delivery speed in milliseconds for timed and pinpointed lubrication (PD series)
- Broad viscosity range due to special designs and small piston clearance
- ATEX explosion-proof versions available
- Extra, downstream-located flow control valves or progressive metering devices possible



Applications

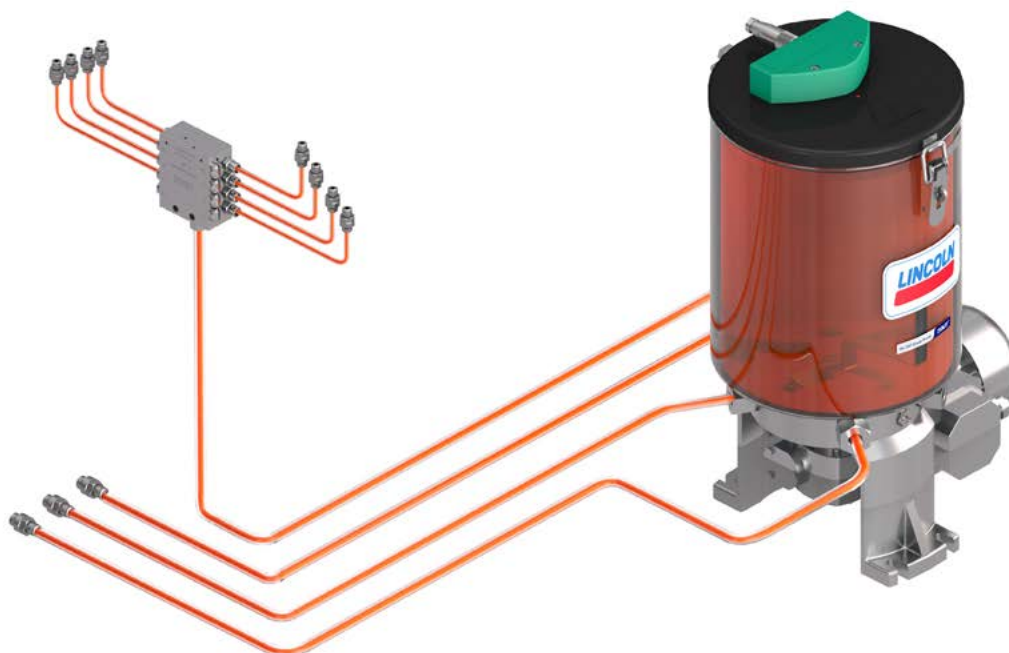
SKF Multi-line oil pumps are sophisticated and have a long tradition going back to applications in steam-driven locomotives. Currently, they deliver the superior reliability standard required in high-stressed machines in sensitive areas with extreme vibrations, specially formulated oils, high lubrication point back pressures or certain safety regulations such as:

- Vacuum pumps, compressors (all types) and the hyper-compressor industry
- Combustion engines for valve and cylinder liner lubrication
- Important oil total-loss or very small oil circulation applications
- Rubber-mixing machinery, supply of critical plasticizer oil
- Meet ATEX and API standards in the oil and gas industry
- Chain lubrication in agriculture, packaging and material handling machines

LINCOLN

SKF

Multi-line lubrication systems for grease



System description

SKF multi-line lubrication systems consist of the following components: a pump unit, control and monitoring devices, tubing and fittings. Multi-line pump units supply lubricant to lubrication points without extra metering dividers. Thus, each lubrication point has its own pumping element. The system design is simple, accurate and most reliable.

Multi-line pumps can be actuated mechanically, electrically or hydraulically. The easily exchangeable pumping elements are usually operated by eccentric cam. Depending on the drive speed, gearbox ratio and selected pump element size, a delivery range from almost 0 to 35 cm³/min (0 to 2.13 in³/min) can be covered. The built-in stirrer mixes the grease (grease softening process), is synchronized with the pump element suction stroke, and assists the heavy lubricant to flow into the suction chamber. This unique concept supplies heavy lubricants usually up to NLGI 3.

An individual lubrication volume setting per pump outlet is possible by selecting pumping elements with different piston diameters and/or stroke settings. The potential numbers of outlets range from 1 to 30.

SKF multi-line grease pumps are designed for demanding applications in nearly all industries. Most pump versions are available with special reservoirs for oil. The P 215 and P 230 pump series enable the use of plasticizer oil for the rubber industry.

Advantages:

- Sturdy; durable pump series designed for 24/7 operation
- Simple; continuous lubrication without electrical cycle timers, in most cases
- Versatile; select individual pump element characteristics and reservoir size
- Precise; set the required stroke volume at the pumping element
- Due to the use of a built-in stirrer and broad viscosity range, heaters are not required
- ATEX explosion-proof versions available
- Extra, downstream-located flow control valves or progressive metering devices possible



Applications

SKF Multi-line grease pumps have a long tradition in the heavy steel industry and meet ATEX standards for gas and dust. Their reliability standard is specified for high-stressed machinery in sensitive and/or dirty areas with pressure requirements up to 350 bar (5 075 psi) such as:

- Construction and mining machinery
- Tunnel-boring machines
- Forging, bending, forming and cutting presses
- Crushers, cranes and conveyors
- Pumps and compressors
- Rubber-mixing machinery
- Water and slurry pumps

LINCOLN

SKF



SKF

10

LINCOLN

Overview of multi-line oil pumps and pump units

Mechanically operated pumps

Product	Outlets	Reservoir		Metering quantity per outlet		Operating pressure max.		ATEX ¹⁾	Page
		l	gal	cm ³ /min	in ³ /min	bar	psi		
SP/G	2 or 4	on request	<i>on request</i>	0,14–2,9	0.008–0.176	3	44	–	12
OCL-M	1–20	optional 5 l reservoir	optional 1.3 gal reservoir	0,006–12,8	0.0003–0.781	10	145	–	14
RA ... U	1–20	on request	<i>on request</i>	0,07–36	0.004–2.196	63	913	• 2)	16
55i	1–14	1–8	0.26–2.1	0,2–12,7	0.012–0.775	400	5 800	–	18
JM	1–28	2–14; any	0.5–3.7; any	0,17–5,0	0.010–0.305	600	8 700	• 3)	20
SP/PFE	1–5	on request	<i>on request</i>	1,0–75,0	0.061–4.576	4 000	58 000	• 3)	30

¹⁾ on request

²⁾ for gas: II 2G c IICT4 Gb; for dust: II 2D c IIIC T 135°C Db

³⁾ for gas: II 2G c IICT4 Gb

Hydraulically operated pump units

Product	Outlets	Reservoir		Metering quantity per outlet		Operating pressure max		Page
		l	gal	cm ³ /min	in ³ /min	bar	psi	
PD ...	4–10	–	–	0–20	0–1.22	63	913	22
PC	1–28	–	–	1,74–227	0.106–13,852	50	725	24

Electrically operated pumps

Product	Outlets	Reservoir		Metering quantity per outlet		Operating pressure max		ATEX ¹⁾	Page
		l	gal	cm ³ /min	in ³ /min	bar	psi		
RA... M/RA B	1–20	0,3–15, any	0.8–4; any	0,07–36	0.004–2.196	60	870	• 2)	26
PC	1–28	–	–	1,74–227	0.106–13.85	50	725	–	24
JM	1–28	2–14; any	0.5–3.7; any	0,15–7,95	0.009–0.485	600	8 700	• 3)	20
SP/PFE	1–5	on request	<i>on request</i>	1,0–75,0	0.061–4.576	4 000	58 000	• 3)	30

¹⁾ on request

²⁾ for gas: II 2G c IICT4 Gb; for dust: II 2D c IIIC T 135 °C Db

³⁾ for gas: II 2G c IICT4 Gb

Pump

SP/G



Product description

The SP/G rotary-driven, multi-line piston pump features a fixed internal gear ratio of 33:1. Its compact pump design with only two rotating/movable parts is slide operated and requires no rubber seals, springs or additional non-return valves. The SP/G is available as a self-priming pump or as a pump with priming pressure. Designs with two or four outlets are available. The two-outlet version is offered in two different piston sizes respective of delivery volumes. One vibration-proof, stroke-regulating screw per outlet pair enables fine-tuned stroke settings.

Features and benefits

- Virtually maintenance-free, vibration-proof, 24/7 design
- Designed for high ambient temperatures and all standard lubrication oils
- Machine operated; no under- or over-lubrication
- Oil supply from machine sump or from existing oil-circulation system
- Adjustable output
- Available for two drive directions

Applications

- Marine industry; inlet valve seat lubrication for powerful four-stroke engines
- General machine-driven applications

Technical data	
Function principle	mechanically operated piston pump
Metering quantity ¹⁾	piston K6: max. 0,042 cm ³ /stroke max. 0,0026 in ³ /stroke piston K7: max. 0,058 cm ³ /stroke max. 0,0035 in ³ /stroke
Lubricant	mineral, synthetic, environmentally safe oil; up to 12 to 800 mm ² /s
Operating pressure	3 bar; 43 psi, plus inlet pressure
Inlet pressure	0 or 2 to 6 bar, 0 or 30 to 85 psi
Operating temperature	max. 100 °C; 212 °F
Outlets	2 or 4
Internal ratio	30:1
Drive speed	300-3000 min ⁻¹
Drive direction	left/right
Connection in/outlet	for tube Ø 4 and 6 mm OD
Dimensions	2 outlets: 56 × 88,5 × 44 mm 2,22 × 3,5 × 1,8 in 4 outlets: 69 × 85 × 45 mm 2,7 × 3,4 × 1,8 in
Mounting position	any

¹⁾ With priming pressure increased delivery volume; see technical information

NOTE

For further technical information, technical drawings, accessories, spare parts or product function descriptions, see the following publication available on SKF.com/lubrication: **951-170-219-EN**

Pump

SP/G



Pump units for oil

SP/G tube connections

Order number	Description
Inlet screw unions	
406-001	double-tapered ring for tube Ø 6 mm OD
406-002	socket union M10 x 1 – tube Ø 6 mm OD
Outlet screw unions	
404-001	double-tapered ring for tube Ø 4 mm OD
404-002	socket union M8 x 1 tube Ø 4 mm OD

SP/G coupling element with snap ring

Order number	Description	Item
44-1202-2038	coupling element	1
44-0606-6302	snap ring for coupling element	2



Pump

OCL-M



Product description

SKF Lincoln automatic chain lubrication system OCL-M combines a mechanical operated piston pump, lubrication application brushes as well as matching fittings, tubes and fixing material. OCL-M supports reliable machine peak performance, by continuously lubricating heavily used chains. The precise amount of oil dispensed by the system keeps the chain running smoothly. At the same time it helps to avoid aging processes caused by friction or corrosion. Since the system only works when the chain is moving, leakages are largely avoided. The robust design of the OCL-M withstands harsh conditions.

Features and benefits

- Improves chain performance and service life
- Available in pre-configured kits
- Easy to select and install
- Cost-effective

Applications

- Agricultural machineries such as balers and combines
- Intralogistics in factories such as beverage plants
- Storage and warehouse areas
- Packaging machines

Technical data

Function principle	mechanically operated radial piston pump
Operating temperature	-15 to 80 °C, +5 to +176 °F
Operating pressure	max. 10 bar, 145 psi
Outlets	4 to 20
Stackable pump elements	max. 5
Outlets per pump element	4
Lubricant	mineral- and synthetic-based oil, 25 to 2 000 mm ² /s
Metering quantity per outlet and rotation	
Pump element D7	0,02–0,06 cm ³ ; 0.0012–0.003 in ³
Pump element D6	0,015–0,04 cm ³ ; 0.0009–0.002 in ³
Pump element D4	0,006–0,02 cm ³ ; 0.0003–0.001 in ³
Drive speed	30 to 1450 min ⁻¹
Gear box	Worm, or worm wheel
Internal ratio	1:6,75; 1:27
Dimensions	min. 107 × 101 × 74 mm max. 215 × 101 × 74 mm min. 4.21 × 3.98 × 2.91 in max. 8.46 × 3.98 × 2.91 in
Mounting position	any

NOTE

For further technical information, technical drawings, accessories, spare parts or product function descriptions, see the following publications available on SKF.com/lubrication:
19399 EN, 951-121-003- EN

Pump

OCL-M

Identification code: **OCL - M - G - - 7 - 6 - 4**

Product series
RA = radial piston pump

Drive
M = mechanically operated

Gear box
1 = Ration 1:6.75, 1400/207
2 = Ration 1:27, 1400/52

Number of D7 pump elements (adjustable displacement per outlet 0,02–0,06 cm³)
 0 = No D7 pump element 3 = 3 rings, 12 outlets
 1 = 1 ring, 4 outlets 4 = 4 rings, 16 outlets
 2 = 2 rings, 8 outlets 5 = 5 rings, 20 outlets

Number of D6 pump elements (adjustable displacement per outlet 0,015–0,04 cm³)
 0 = No D6 pump element 3 = 3 rings, 12 outlets
 1 = 1 ring, 4 outlets 4 = 4 rings, 16 outlets
 2 = 2 rings, 8 outlets 5 = 5 rings, 20 outlets

Number of D4 pump elements (adjustable displacement per outlet 0,006–0,02 cm³)
 0 = No D4 pump element 3 = 3 rings, 12 outlets
 1 = 1 ring, 4 outlets 4 = 4 rings, 16 outlets
 2 = 2 rings, 8 outlets 5 = 5 rings, 20 outlets



OCL-M kits incl. fittings and mounting accessories

Order number	Number of pump elements	Reservoir size	Number of brushes	Lubricant line length
OCL-MK-0001300-3	2	5 l	12	36 m
OCL-MK-0031200-3	3	5 l	8	24 m

Accessories

Order number	Description
6770-02502-3	OCL-M pump mounting bracket set
6770-02503-3	OCL-M 5l reservoir set
6770-02504-3	Hose set
6770-02505-3	Brush assembly set (4 x Ø9 mm brush)
6770-02506-3	Brush assembly set (4 x Ø25 mm brush)
6770-02507-3	Brush mounting set
6770-02501-3	Pump connecting set
6770-02513-4	Y-connector set
6770-02508-4	12 m flexible tube helix 3/8
6770-02509-4	25 m plastic helix GR 6 black
6770-02510-4	12 m GI metallic flexible conduit 3/8 in



Pump

RA ... U



Product description

The RA multi-line pump is a unique radial piston pump with stackable pump elements. The modular pump design allows up to five pump elements, each with one, two or four outlets. A later outlet reduction or outlet extension is thus possible. The displacement of all outlets from a pump element is adjustable by a common setting device, setting range 33–100%. Several different mechanical or electric motor drives are available.

Features and benefits

- Modular pump-to-point solution for 1 to 20 lubrication points
- Depending on drive speed respective of selected drive ratio, RA pumps cover feed rates of some droplets until 36 cm³/min (2.2 in³/min)
- Drive direction left or right
- Compatible with mineral- and synthetic-based oil
- Vibration-proof, marine and ATEX versions available
- Supplies several different lubrication zones, lubrication points or chain pins

Applications

- Gas compressors and large pumps
- Economic power unit for sealing oil systems
- Marine, valve-seat lubrication on large four-stroke engines

Technical data

Function principle	radial piston pump with stackable pumping elements
Operating temperature	-15 to 80 °C, +5 to +176 °F,
Operating pressure	10 to 63 bar, 145 to 915 psi
Outlets	depending on drive speed and oil viscosity 1 to 20 (max. 5 elements with 1, 2 or 4 outlets)
Lubricant	mineral- and synthetic-based oil, 25 to 2 500 mm ² /s
Metering quantity per outlet	0,007–0,02 cm ³ /revolution 0,0004–0,0012 in ³ /revolution
Output per outlet	0,07–36 cm ³ /min 0,004–2,2 in ³ /min
Internal ratio	1:1, 5:1, 10, 5:1, 15:1, 25:1, 75:1, 125:1
Dimensions	min. 113 × 54 × 54 mm max. 220 × 54 × 54 mm min. 4.45 × 2.13 × 2.13 in max. 8.68 × 2.13 × 2.13 in
Drive speed	10 to 1 800 min ⁻¹
Protection class	min. IP 55
Mounting position	any
Options	with manual hand crank for pre-lubrication, customized pre-set volume version with two inlet sections for two different oil types

NOTE

For further technical information, technical drawings, accessories, spare parts or product function descriptions, see the following publications available on SKF.com/lubrication:

11103 EN, 951-170-230 EN



CAD data

skf-lubrication.partcommunity.com/3d-cad-models/

Pump

55i



Product description

The positive-displacement, single-action 55i pumps are fully adjustable by means of manually modifying the angle of the rocker arm to the cam. The pump operation is a two-stage process. As the camshaft rotates, the cam mechanically forces the pump plunger forward, displacing a measured volume of oil. On the second or return stroke, a spring assists the plunger to return for prime. All pump elements are designed with a pushbutton for manual pre-lubrication.

Features and benefits

- Easy adjustment of flow rate
- Pushbutton for pre-lubrication and system de-aeration
- Modular box lubricator mounting for ease of maintenance
- Pumps with suction tube for oil suction from the lubricator box or with direct feed by overhead reservoir
- With or without sight glass for visual flow indication
- For operating viscosity up to 1 700 mm²/s

Applications

- Gas engines
- Reciprocating compressors
- High-pressure oil, total-loss lubrication systems

Technical data

Function principle	camshaft-operated piston pump
Metering quantity	K 3/16: 0,20 cm ³ , 0.0122 in ³ K 1/4: 0,302cm ³ , 0.0184 in ³ K 3/8: 0,68 cm ³ , 0.0415 in ³
Outlets	1 to 7
Lubricant	mineral- or synthetic-based oil, viscosity max. 1 700 mm ² /s
Operating pressure	K 3/8: max. 240 bar, 3 500 psi K 1/4: max. 400 bar, 6 000 psi
Operating temperature	-20 to +70 °C, -4 to + 158 °F
Reservoir	1,4 to 3,8 l, 0.37 to 1.0 gal depends on outlet quantity
Internal ratio	37.5:1; 60:1; 112.5:1
Drive speed	<20 min ⁻¹ ; depends on box lubricator
Electrical motor drives	for pumps with 112.5:1 and 300:1 ratio only
Connection outlet	1/8 NPTF
Dimensions	min. 127 × 88 × 35 mm max. 127 × 132 × 35 mm min. 5 × 3 15/32 × 1 3/8 in max. 5 × 5 3/16 × 1 3/8 in outer parts when installed in box lubricator
Mounting position	vertical
Options	pumping elements without sight glass lubrication sentries to control the oil-level and camshaft rotation, oil-level regulator

NOTE

For further technical information, technical drawings, accessories, spare parts or product function descriptions, see the following publication available on SKF.com/lubrication:
FORM 442834 EN

Pump

55i

Identification code	55i													
Product series	55i = camshaft-operated piston pump													
Reservoir	3 = 1,4 l, 3 pint, max. 3 single pumps 4 = 1,9 l, 4 pint, max. 5 single pumps 8 = 3,8 l, 8 pint, max. 7 single pumps													
Drive / gear ratio / available reservoir size / speed														
Designation	Drive	Ratio	Reservoir	Speed										
			l pt	min ⁻¹										
A = rotary drive, internal gear and ratchet	right or left	37,5:1	1,9 4.8 3,8 9.6	700										
B = internal ratchet and external lever	right or left	75 teeth	1,9 4.8 3,8 9.6	1100										
C = internal super gear, pulley,machine drive	right or left	112,5:1	1,9 4.8 3,8 9.6	1200										
D = external gear drive, specific OEM frame	right or left	60:1	1,9 4.8	1200										
Single Pumps														
Designation	Piston Ø	Inlet	Sight glass	Operating pressure max.	Metering quantity per stroke max.	Order number spare part								
	mm inch			bar psi	drops cm ³ in ³									
1 = vacuum feed	6,4 1/4	suction tube •		400 6000	9 0,302 0.0184	880550								
2 = vacuum feed	9,5 3/8	suction tube •		240 3500	21 0,680 0.0415	880560								
4 = pressure inlet, manifold feed	6,4 1/4	1/8 NPTM •		400 6000	9 0,302 0.0184	880551								
6 = direct feed	6,4 1/4	1/8 NPTF -		400 6000	9 0,302 0.0184	880552								

55i accessories	
Description	Order number
armored sight glass kit	276517

Pump unit

JM



Product description

The multi-line JM oil lubrication pump is a high-pressure pump that provides a maximum continuous operating pressure of 600 bar (8 700 psi). Its modular design features unique, adjustable, dual-piston pumping elements (separate dosing and high-pressure booster piston) in combination with an optical drip indicator that delivers outstanding reliability.

Depending on the application, the pump can be machine or electrically driven. The JM pump is available in a pressure-tight design that is suitable for use with overhead lubrication oil tanks. It can deliver all mineral oils with an operating viscosity between 25 and 3 000 mm²/s.

Features and benefits

- Designed for 24/7 operation
- Three piston sizes cover output from 0,17 to 5,0 cm³/min (0.01 to 0.29 in³/min) per outlet
- Individual outlet settings between 25 and 100%
- Pressure-tight design available
- Can be monitored according to API 618 standards
- Most reliable replacement for all standard box lubricators

Applications

- Reciprocating gas compressors, mainly in an ATEX environment
- Pump-to-point lubrication of packings and cylinders
- Petro-chemical and food and beverage industry

Technical data

Function principle	cam-operated piston pump in modular design, rotary or electrically operated
Metering quantity per stroke	0,017–0,2 cm ³ , 0.001–0.012 in ³
Outlets	1 to 28
Lubricant	mineral- or synthetic-based oil, 25 to 3 000 mm ² /s
Operating pressure	max. 600 bar, 8 700 psi
Operating temperature	0 to +40 °C, +32 to +104 °F
Protection class	min. IP 55F, ATEX available
Reservoir	per module 2 l, 0.5 gal
Internal ratio	1:1, 35:1, 62.8:1, 83.2:1, 100.9:1, 125.7:1
Drive speed main shaft n ₂	10 to 25 min ⁻¹
Metering quantity per outlet	0,17–5,0 cm ³ /min, 0.01–0.305 in ³ /min
Drive	3-phase motor or mechanical
Outlet connections	G 1/4, tube Ø 6 or 8 mm OD
Dimensions	min. 315 × 200 × 260 mm max. 1 455 × 200 × 260 mm min. 12.4 × 7.87 × 10.24 in max. 57.3 × 7.87 × 10.24 in
Mounting position	horizontal, level surface
Options	pressure-tight design for overhead reservoirs, additional oil reservoir with heater and oil-level sensor, camshaft rotation sensor, oil flow pulse transmitters in ATEX

NOTE

For further technical information, technical drawings, accessories, spare parts or product function descriptions, see the following publication available on SKF.com/lubrication:
951-170-019; 951-180-073; 14600; 1-3007

Pump unit

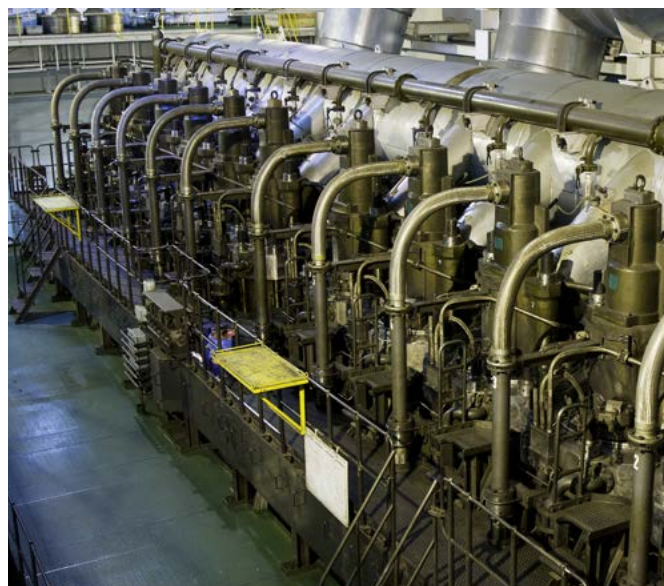
JM

Identification code	JM	-	3M	-					A		AG07
Product series											
Oil reservoir ¹⁾ and number of outlets											
02 = 2 l, 0.53 gal, max. 4 outlets											
04 = 4 l, 1.1 gal, max. 8 outlets											
06 = 6 l, 1.6 gal, max. 12 outlets											
10 = 10 l, 2.6 gal, max. 20 outlets											
12 = 12 l, 3.2 gal, max. 24 outlets											
14 = 14 l, 3.7 gal, max. 28 outlets											
14 .. 24 = twin version with drive M, max. 28 outlets											
Oil reservoir											
A = pressure tight, feed by overhead reservoir ¹⁾											
B = ventilated											
Drive type											
3M = E-motor operated including gear reduction ²⁾											
Gear ratio ¹⁾											
39 = 35.1:1											
57 = 62.8:1											
78 = 83.2:1											
98 = 100.9:1											
13 = 125.7:1											
Drive											
A = left											
B = right											
M = middle (left max. 24 outlets, right max. 24 outlets)											
Metering quantity, selection of pump element size											
1 = 0,025–0,10 cm ³ , 0.0015–0.006 in ³											
2 = 0,05–0,20 cm ³ , 0.003–0.012 in ³											
3 = 0,017–0,07 cm ³ , 0.001–0.004 in ³											
0 = mixed design, please specify											
Outlets											
01 = 1 outlet											
....											
28 = total number of outlets											
Connection outlet for tube Ø OD											
W = 8 mm solderless											
X = 8 mm solderable											
Y = 6 mm solderless											
Z = 6 mm solderable											
- = G 1/4 female, stainless steel											
Modification index											
A = standard											
Design key ¹⁾											
0001 = basic design											
4068 = ATEX II 2G c IIC T4 Gb											
Motor code ¹⁾											
AG07 = E-motor 1 000 min ⁻¹ ; 1 500 min ⁻¹ on request available protection class: IP 55F											

¹⁾ For supply via additional or overhead reservoir (max. installation height of 10 m; 5 m in conjunction with an additional reservoir in steel design)
²⁾ For direct machine-operated versions, please consult technical support

Pump unit

PDYY, PDYC and PDYS



Product description

Designed for high-speed cylinder lubrication on two-stroke engines, the PDY... pumps use an existing oil supply system or drive pump unit. Engine electronics trigger the pre-loaded pumps by activating the solenoid valve. The exact stroke volume can be synchronized with the moving engine piston, and ignition timing can be adjusted to reach various piston stress areas with oil. PDYY and PDYC pumps feature a baseplate configuration with 6 or 8 outlets. PDYS pumps have double-stroke functionality for use on small-bore engines with only 4 outlets per cylinder.

Features and benefits

- Accurate, timed oil metering quantities within a millisecond
- Load-dependent, lubrication standard
- Modular design for easy assembly and service
- Prevents over-lubrication, deposits, excess smoke and CO₂
- Provides up to 40% oil savings
- Retrofit solutions available

Applications

- Marine industry
- General industry
- Chains or compressors

Technical data

Function principle	electrically/hydraulically operated multi-outlet pump
Metering quantity	40 to 310 mm ³ 0.0024 to 0.019 in ³
Outlets	PDYS: 4 PDYY, PDYC: 6 or 8
Lubricant	mineral-based oil up to SAE50; 25 to 2000 mm ² /s
Drive oil	PDYS: supply unit with lubricating oil PDYY, PDYC: mineral-based system oil up to SAE30
Operating pressure	45 to 55 bar; 650 to 800 psi
Operating temperature	+5 to 70 °C; +41 to 158 °F
Injection time	PDYS, : <5 ms; PDYY, PDYC: <8 ms
Power supply	24 V DC
Protection class	IP 65
Mounting position	PDYY/C/S outlets on top
Dimensions	max. 270 × 261 × 180 mm max. 10.6 × 10.3 × 7.1 in
Options	oil drive units with redundant pumps according to the marine standard

NOTE

For further technical information, technical drawings, accessories, spare parts or product function descriptions, see the following publications available on SKF.com/lubrication:
 PDYY; System CLU4: **951-130-314 EN**
 PDYC; System CLU4C: **951-160-012 EN**
 PDYS; System CLU5: **951-170-210 EN**

Pump unit

PDYY, PDYC and PDYS

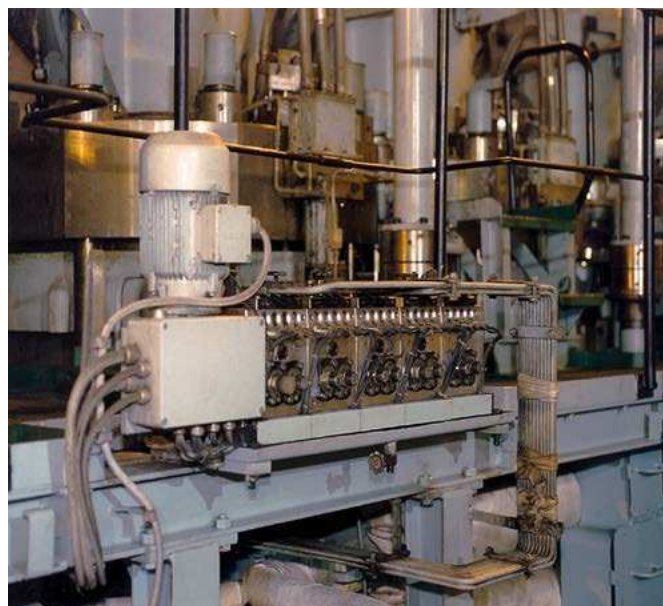
Identification code	
Product series	
PDYY = electrically/hydraulically operated pump; (CLU4) PDYC = electrically/hydraulically operated pump; compact design (CLU4C) PDYS = electrically/hydraulically operated pump; small design (CLU5)	
Outlets	
04 = 4 outlets 06 = 6 outlets 08 = 8 outlets	
Engine bore size	
35 = 35 cm, 13.78 in 40 = 40 cm, 15.75 in ... 96 = 96 cm, 37.79 in XX = engine size independent	
Accumulator	
A = 0,75 l, 0.2 gal for PDYY B = 0,32 l, 0.085 gal, for PDYC X = without	
Metering quantity per stroke	
PDYS: 40 = 40 mm ³ ; 0.0024 in ³ 60 = 60 mm ³ ; 0.0037 in ³	PDYY, PDYC: 90 = 90 mm ³ ; 0.0055 in ³ 110 = 110 mm ³ ; 0.0067 in ³ 150 = 140 mm ³ ; 0.0092 in ³ ... 310 = 310 mm ³ ; 0.019 in ³
Outlet connection for tube Ø OD	
A = 6 mm C = 10 mm B = 8 mm / = without outlet connection	
Design key	
0201 = basic version without bracket 4XXX = special version	
Solenoid valve	
24DC = voltage 24 V DC	

PDYY, PDYC and PDYS accessories

Order number	Pump	Description
161-140-050+924	PDY/Y/C	solenoid valve
161-140-056+924	PDYS	solenoid valve
24-1884-2324	PDY/Y/C	pressure sensor
24-1884-2397	PDYS	pressure sensor
24-2578-2041	PDYC	accumulator: 0,32 l; 0.085 gal
24-2578-2044	PDYY	accumulator: 0,75 l; 0.2 gal

Pump unit

PC



Product description

Designed for total-loss lubrication systems with significant oil volume requirements, the PC pump unit features from 1 to 28 outlets. Delivery volume can be sub-divided using a progressive-type metering device, enabling the pump to cover up to 224 lubrication points. This all-in-one pump unit consists of a frequency-controlled E-motor with gear reduction, pump modules with pumping elements for six pre-defined settings, optical/electrical flow controls, additional sensors for low level and optional drive speed, safety valves and connections for heating oil. Its integrated shut-off valves, one per module, allow the use of different lubricating oil and/or pumping element replacement during operation. The terminal box with pre-wired sensors contains a pushbutton for pre-lubrication.

Features and benefits

- Accurate, robust lubrication pump assembly
- Load-dependent, variable-speed operation as standard
- E-motor with electrically operated air fan enables wide speed range
- Ease of operation, maintenance and assembly
- Assembly brackets for hanging or standing position
- 24/7 operation in arctic and tropical conditions

Applications

- Marine industry

Technical data

Function principle	modular electrically or hydraulically operated piston pump unit in marine standard, with non-flow sensors and oil-heating connections
Metering quantity per outlet	1,74–227 cm ³ /min, 0.1–14 in ³ /min
Outlets	1 to 28
Lubricant	mineral oil up to SAE 5012 to 2 000 mm ² /s
Lubricant supply	by overhead reservoir, max. inlet pressure 2 bar, 30 psi
Operating pressure	max. 50 bar, 725 psi
Operating temperature	+5 to 45 °C, +41 to 113 °F
Internal ratio	4.83; 14.5; 19; 29; 38; 51; 62 : 1
Output per Outlet	0,27–1,1 cm ³ , 0.016–0.067 in ³
Electrical connection Sensor	24 V DC
Hydraulic drive option	100 cm ³ /revolution, 60–360 min ⁻¹ for i = 4.81:1 and 7.25:1 only
Protection class	IP 55F
Connection	inlet: G 11/4 outlet: G 1/4 for tube Ø10 mm OD
Dimensions	min. 610 × 513 × 320 mm max. 610 × 1 580 × 320 mm min. 24 × 20.2 × 25.6 in max. 24 × 62.2 × 25.6 in
Mounting position	horizontal
Options	version with mainshaft revolution; sensor; sensors NPN instead of NAMUR

NOTE

For further technical information, technical drawings, accessories, spare parts or product function descriptions, see the following publication available on SKF.com/lubrication:
951-170-208

Pump unit

PC

Identification code	PC						A	1	C				
Product series													
Size													
2 = 2 modules, max. 8 outlets				5 = 5 modules, max. 20 outlets									
3 = 3 modules, max. 12 outlets				6 = 6 modules, max. 24 outlets									
4 = 4 modules, max. 16 outlets				7 = 7 modules, max. 28 outlets									
Mounting plate position													
B = top (floor)													
R = rear (rear wall)													
Drive type													
1M = worm drive with electric motor													
1Y = worm drive with hydraulic motor													
Pump location and front label design													
VM = front side mounted, multi level, 1 upper level, 1 lower level, 2 upper level ...													
VS = front side mounted, single level, 1, 2, 3, 4 ... x													
HM = rear side mounted, multi level, x ... 4 upper level, 4 lower level, 3 upper level													
....													
HS = rear side mounted, single level, x ... 4, 3, 2, 1													
Gear reduction													
14 = 14,5:1 for drive type 1M				51 = 51:1 for drive type 1M									
19 = 19:1 for drive type 1M				62 = 62:1 for drive type 1M									
29 = 29:1 for drive type 1M				05 = 4,83:1 for drive type 1Y									
38 = 38:1 for drive type 1M				07 = 7,25:1 for drive type 1Y									
Drive position													
A = motor at left													
Pump element													
1 = piston Ø10 mm													
Outlets													
01 = 1 outlet; 28 = 28 outlets													
Outlet connection for tube ØOD													
C = 10 mm													
Design key													
A0001 = basic version, electric motor with GL approval, NAMUR sensor incl. terminal box, colour Munsel 7,5 BG7/2													
A0002 = basic version, with tachometer													
A0003 = basic version, sensor type NPN instead of NAMUR													
A4002 = basic version, sensor type NPN instead of NAMUR, without terminal box													
A4003 = basic version, sensor type NPN instead of NAMUR, without terminal box, with revolution sensor													
A4004 = basic version, including oil tray and mounting bracket													
A4005 = same as A0003, with revolution sensor													
Motor code													
AS07 = 3-phase standard motor 255/460 V 60 Hz, n = 1 740 min ⁻¹ , IP 55F													
HM00 = hydraulic motor Danfoss OMR100													

PC accessories	
Order number	Description
24-0404-2493	gasket set with seals
24-1557-3560	spare pumping element
24-0651-3519	filter element only



Pump unit

RA ... M/RA B



Product description

The RA radial piston pump features a modular design that enables use of up to five stackable pump elements, and outlet reduction or expansion can be accomplished easily. Displacement of all outlets from a pump element is adjustable by a common setting device and features a setting range of 33-100%. The RAB series pump have a pre-assembled oil reservoir.

Features and benefits

- Pump-to-point solution for 1 to 20 lubrication points
- Covers feed rates of certain droplets 36 cm³/min
- Compatible with mineral and synthetic oils
- Vibration-proof, marine and ATEX versions available

Applications

- Gas compressors and large pumps
- General industry, total loss, sealing and small oil-circulation applications
- Marine



NOTE

For further technical information, technical drawings, accessories, spare parts or product function descriptions, see the following publications available on SKF.com/lubrication:

11103 EN, 951-170-230 EN



CAD data

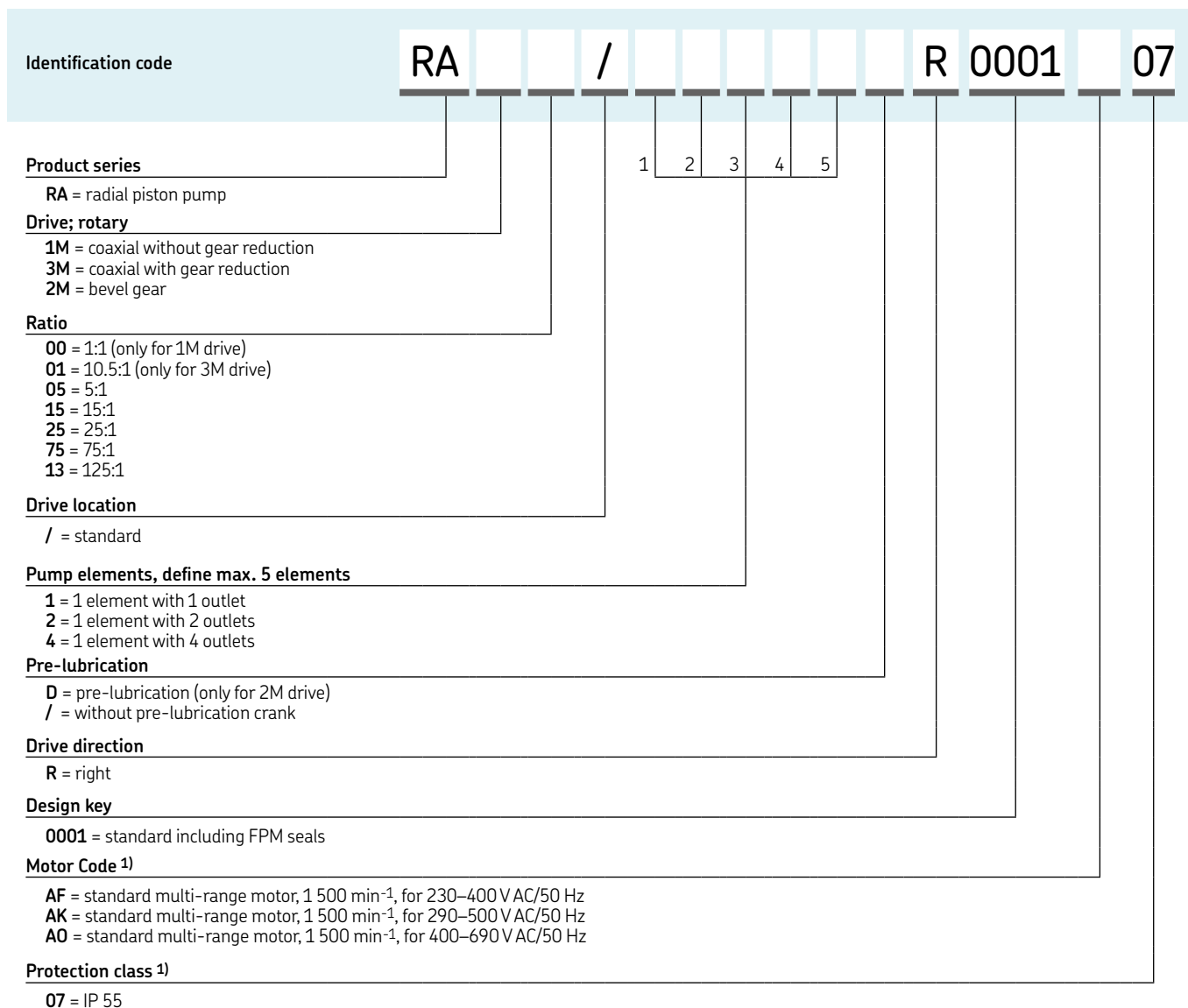
skf-lubrication.partcommunity.com/3d-cad-models/

Technical data

Function principle	radial piston pump with stackable pumping elements, mechanically or electrically operated
Outlets	1 to 20 (max. 5 elements with 1, 2 or 4 outlets)
Metering quantity per outlet	0,007–0,02 cm ³ /revolution 0,0004–0,001 in ³ /revolution
Output per outlet	0,07–36 cm ³ /min 0,004–2,2 in ³ /min
Internal ratio	1:1, 5:1, 10, 5:1, 15:1, 25:1, 75:1, 125:1
Lubricant	mineral- and synthetic-based oil, 25 to 2500 mm ² /s
Reservoir	3, 7, 15 l and more, 0,8, 1,8, 4 gal and more
Operating pressure	10 to 63 bar, 145 to 913 psi depending on drive speed and oil viscosity
Operating temperature	–15 to 80 °C, +5 to 176 °F electrically operated: –15 to 40 °C; +5 to +104 °F
Protection class	min. IP 55
Drive speed	10 to 1 800 min ⁻¹
Connection in/outlet	G 1/8
E-motor drive	with 3-phase motor
Drive direction	left/right
Dimensions	without reservoir: min. 113 × 54 × 54 mm max. 220 × 54 × 54 mm min. 4.45 × 2.13 × 2.13 in max. 8.68 × 2.13 × 2.13 in with reservoir: min. 400 × 333 × 140mm max. 650 × 441 × 288 mm min. 15.7 × 13.1 × 5.5 in max. 25.6 × 17.4 × 11.3 in
Mounting position	any, RAB versions vertical
Options	with manual hand crank for pre-lubrication, customized pre-set volume, reservoir options with further accessories

Pump unit

RA ... M

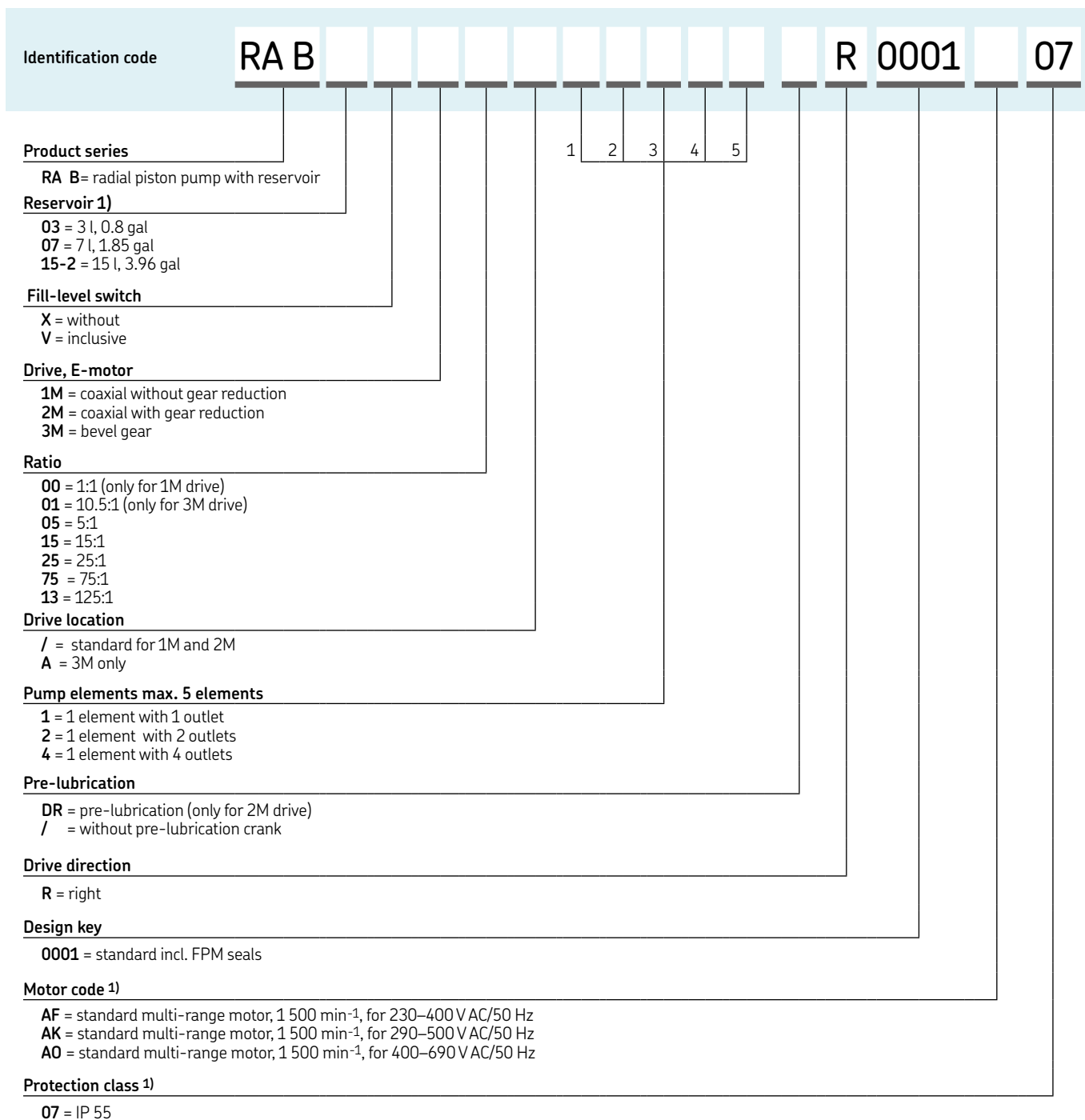


¹⁾ further models on request



Pump unit

RAB



1) further models on request

Pump unit

RA ... accessories

RA ... U drive assembly

Description	Order number
coaxial 1:1	24-0701-3000
coaxial 5:1	24-0701-3070
coaxial 5:1 with pre-lubrication	24-0701-3080
bevel gear, 10,5:1, position A	24-0701-3001
bevel gear, 10,5:1, position B	24-0701-3002
coaxial 15:1	24-0701-3071
coaxial 15:1 with pre-lubrication	24-0701-3081
coaxial 25:1	24-0701-3072
coaxial 25:1 with pre-lubrication	24-0701-3082
coaxial 75:1	24-0701-3073
coaxial 75:1 with pre-lubrication	24-0701-3083
coaxial 125:1	24-0701-3074
coaxial 125:1 with pre-lubrication	24-0701-3084
spacer ring, only oil, for ratio 1:1	24-1721-2000
spacer ring, only grease	24-1721-2001

RA tie rod ¹⁾ for ratio 1:1; 10,5:1; 15:1; 25:1; 75:1

Description	Order number
for 1 pump element	44-0717-2060
for 2 pump elements	44-0717-2061
for 3 pump elements	44-0717-2062
for 4 pump elements	44-0717-2063
for 5 pump elements	44-0717-2064
washer, 6,4 DIN125 ¹⁾	DIN125-B6.4-ST
nut ¹⁾	DIN934-M6-8

RA pump elements for oil and grease

Description	Order number
for 1 outlet	24-1557-3520
for 2 outlets	24-1557-3521
for 4 outlets	24-1557-3522

RA ... M drive assembly

Description	Order number
coaxial 1:1	24-0701-3004
bevel gear, 10,5:1, position A	24-0701-3003
bevel gear, 10,5:1, position B	24-0701-3004
spacer ring, only oil, for ratio 1:1	24-1721-2000
spacer ring, only grease	24-1721-2001

RA tie rod ¹⁾ for ratio 5:1; 125:1

Description	Order number
for 1 pump element	44-0717-2069
for 2 pump elements	44-0717-2070
for 3 pump elements	44-0717-2071
for 4 pump elements	44-0717-2072
for 5 pump elements	44-0717-2073
washer, 6,4 DIN125 ¹⁾	DIN125-B6.4-ST
nut ¹⁾	DIN934-M6-8

RA accessories

Description	Order number
cover	24-0413-3490
cap nut	95-0006-0917
hand crank	24-0801-2070

¹⁾ two required per pump

Pump unit

SP/PFE



Product description

The SP/PFE multi-line pump is designed for very high system pressures. Its drive parts are located in the pump housing and are pre-filled with high-viscosity gear oil. The special, guided-roller tappet drives the pump element arrangement in a 100% axial direction and eliminates side forces. Each exchangeable pumping element contains a precise, volume-regulating device with scaling, a high-pressure, non-return valve and a high-pressure outlet adapter for up to 4 000 bar (58 000 psi).

Due to the pump's unique design, lubrication oil can be connected from an overhead reservoir directly to the pump elements without the use of additional oil-level controllers.

Features and benefits

- Designed for continuous 24/7 operation
- Modular pump design enables use of up to five pumping elements
- Pressure-tight design; suitable for overhead reservoir connection
- Rack arrangement with additional pumps, filter and flow control equipment available

Applications

- Petro-chemical industry

Technical data

Function principle	Rotary-operated, cam-operated piston pump; with pressure-tight design for overhead reservoirs
Metering quantity per outlet	0–0,14 cm ³ /stroke 0–0.0085 in ³ /stroke
Outlet	1 to 5
Lubricant	mineral- or synthetic-based oil, < 230 mm ² /s
Operating pressure	max. 4 000 bar; 58 000 psi
Operating temperature	+15 to +40 °C, +59 to 104 °F
Internal ratio	1:1
Material	3-phase motor and flanged gearbox available
Drive speed main shaft ¹⁾	10 to 500 min ⁻¹
E-motor drive ¹⁾	10 to 500 min ⁻¹
Connection outlet	gland and sleeve for pipe 3/8 x 1/8
Connection inlet/leak oil outlet	M 14 x 1,5
Dimensions	287 x 350 x 130 cm 512 x 350 x 130 cm 11.3 x 13.8 x 5.1 in 20.15 x 13.8 x 5.1 in
Mounting position	vertical, pump body upright
Options	Available as ATEX package with E-motor drive arrangement, rack mounting, flow monitoring devices

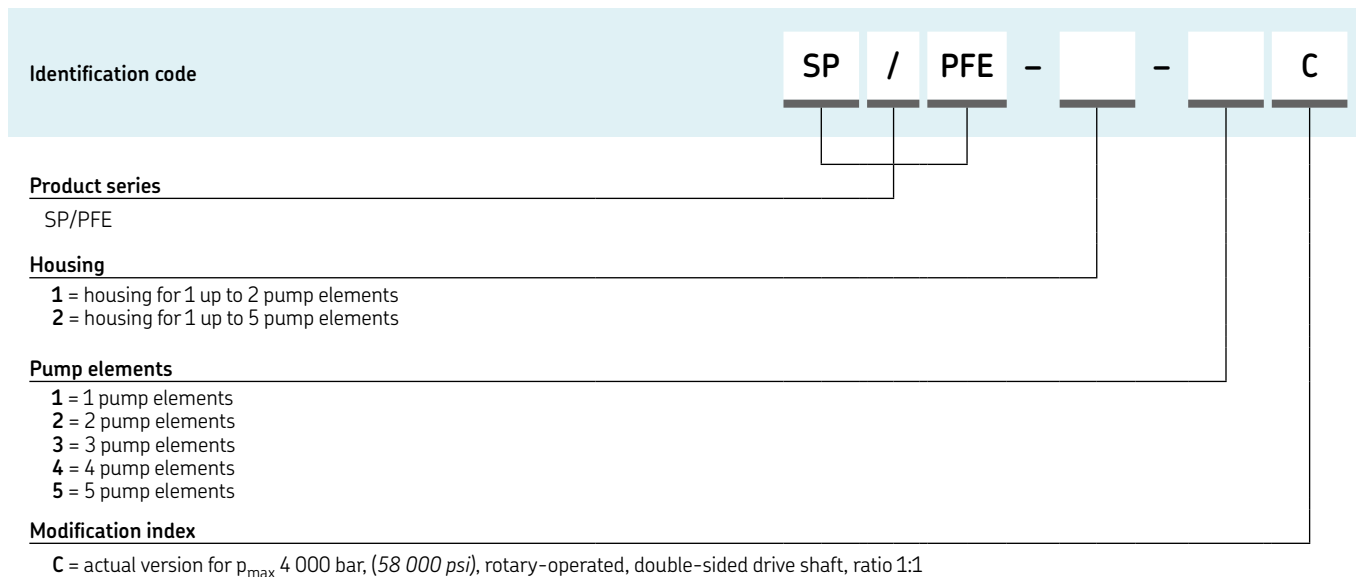
¹⁾ please specify your requirements

NOTE

For further technical information, technical drawings, accessories, spare parts or product function descriptions, see the following publications available on SKF.com/lubrication:
14600EN

Pump unit

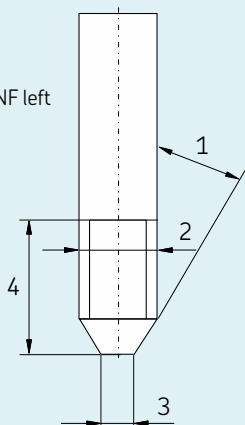
SP/PFE



Accessories SP/PFE pump outlets - high-pressure pipe connection required

Dimensions

- 1 = $29^\circ \pm 30'$
- 2 = 3/8 in 24 NF left
- 3 = $\varnothing 5,5$ mm
- 4 = 19 mm



SP/PFE accessories

Order number	Description	Operating pressure max.	
		bar	psi
744-000-0107	high-pressure pump head complete	4000	58000
24-2317-2017	high-pressure piston and body only	4000	58000



SKF

32

LINCOLN

Overview of multi-line grease pumps

Hydraulically operated pump units

Product	Lubricant grease NLGI				Outlets	Reservoir ⁶⁾		Metering quantity per outlet		Operating pressure max.		Page
	0	1	2	3		kg	lb	cm ³ /min	in ³ /min	bar	psi	
PFHM-ATEX	•	•	•	–	1–6	6	12	0,80–5,00	0.048–0.305	250	3 625	34

Mechanically operated pump units

Product	Lubricant grease NLGI				Outlets	Reservoir ⁶⁾		Metering quantity per outlet		Operating pressure max.		ATEX ³⁾	Page
	0	1	2	3		kg	lb	cm ³ /min	in ³ /min	bar	psi		
RA 20/45	•	•	•	–	1–12	2–5	4.4–10	0,07–6,00	0.004–0.366	60	870	• ⁴⁾	36
P 205	•	•	•	–	1–5	4–30	8.8–66	0,08–4,20	0.005–0.256	350	5 075	• ⁵⁾	36
FF	•	•	•	•	1–12	4–10	8.8–22	0,04–6,90	0.002–0.421	350	5 075	• ⁴⁾	40
P 215 ²⁾	•	•	•	–	1–15	4–100	8.8–220	0,55–3,15	0.033–0.192	350	5 075	• ⁵⁾	42
FB	•	•	•	•	1–24	6–30	13–66	0,04–7,70	0.002–0.469	350	5 075	• ⁴⁾	46
P 230	•	•	•	–	1–30	30–100	66–220	0,55–3,15	0.033–0.192	350	5 075	•	50

Electrically operated pump units ¹⁾

Product	Lubricant grease NLGI				Outlets	Reservoir ⁶⁾		Metering quantity per outlet		Operating pressure max.		ATEX ³⁾	Page
	0	1	2	3		kg	lb	cm ³ /min	in ³ /min	bar	psi		
RA 20/45	•	•	•	–	1–12	2–5	4.4–10	0,07–6,00	0.004–0.366	60	870	• ⁴⁾	36
P 205	•	•	•	–	1–5	4–30	8.8–66	0,08–4,20	0.005–0.256	350	5 075	• ⁵⁾	36
FF	•	•	•	•	1–12	4–10	8.8–22	0,04–6,00	0.002–0.366	350	5 075	• ⁴⁾	40
P 212 ²⁾	•	•	•	–	1–12	30	66	2,50–25,0	0.152–1.525	350	5 075	•	40
P 215 ²⁾	•	•	•	–	1–15	4–100	8.8–220	0,55–3,15	0.033–0.192	350	5 075	• ⁵⁾	42
FB	•	•	•	•	1–24	6–30	13–66	0,04–7,70	0.002–0.469	350	5 075	• ⁴⁾	46
FB-XL	•	•	•	•	1–16	30	66	0,04–35,0	0.002–2.135	350	5 075	• ⁴⁾	46
P 230	•	•	•	–	1–30	30–100	66–220	0,55–3,15	0.033–0.192	350	5 075	•	50

¹⁾ all data based on 50 Hz operation for connection with a frequency of 60 Hz, the speed and volumetric flow are increased by 20%

²⁾ NLGI 3 on request

³⁾ on request

⁴⁾ for gas: II 2G c IICT4 Gb; for dust: II 2D c IICT 125°C Db

⁵⁾ for gas: II 2G c IICT4 Gb; for dust: II 2D c IICT 120°C Db

⁶⁾ valid for $\rho=1 \text{ kg/dm}^3$

Pump unit

PFHM-ATEX



Product description

The PFHM-ATEX is a hydraulically operated, high-pressure multi-line pump. Its one to six pumping elements are available in five sizes from 0,04 to 0,25 cm³/stroke (0.0024 to 0.0152 in³/stroke) or camshaft revolution. The ratio between the hydraulic motor and camshaft is generally 1:1.

The PFHM-ATEX's sturdy steel housing and reservoir with air breather enable use in dusty areas. When utilized in combination with downstream-located progressive divider valves, it can handle up to approximately 50 lubrication points. The reservoir with stirrer is suitable for both grease and oil and is designed for instead with a locking device.

Features and benefits

- Sturdy design with standard, spring-return pumping elements and ATEX classifications
- Designed for 24/7 operation in harsh environments
- Varying speed and stroke volumes enable economical lubricant settings, hydraulic drive without electrics
- Modular design available in corrosiveness class C3 as standard or C5-M according to DIN EN ISO 12944
- Atex classification for gas, dust and mining application as standard

Applications

- Mining, including underground
- Hydraulically operated machinery
- Screens and crushers in quarries
- Chemical industry, offshore

Technical data

Function principle	hydraulically operated radial piston pump in an ATEX design
Metering quantity per stroke	KFG1.U0: 0,250 cm ³ ; 0.0152 in ³ KFG1.U1: 0,125 cm ³ ; 0.0076 in ³ KFG1.U2: 0,090 cm ³ ; 0.0054 in ³ KFG1.U3: 0,065 cm ³ ; 0.0039 in ³ KFG1.U4: 0,040 cm ³ ; 0.0024 in ³
Metering quantity per outlet	0,8–5,0 cm ³ /min; 0.048–0.305 in ³ /min
Outlets	1 to 6
Lubricant	oil and grease: up to NLGI 2
Operating pressure	max. 250 bar; 3 625 psi
Operating temperature	-20 to +40 °C; -14 to +104 °F
Reservoir ¹⁾	6 kg, 12 lb
Internal ratio	1:1
Drive speed	main shaft 4–30 min ⁻¹
Hydraulic drive oil requirements	51,5 cm ³ per revolution, max. 175 bar, 2 540 psi
Outlet connection lubricant	M 14 × 1,5; tube Ø 6, 8, 10 mm
In/outlet hydraulic connection	M 22 × 1,5
Dimensions	580 × 230 × 230 mm 22.8 × 9.1 × 9.1 in
Mounting position	vertical
Options	C5-M

¹⁾ valid for ρ=1 kg/dm³

NOTE

For further technical information, technical drawings, accessories, spare parts or product function descriptions, see the following publication available on SKF.com/lubrication.

Pump unit

PFHM-ATEX

Order information ¹⁾

Order number	Description
PFHM-6-B6-C3-ATEX	standard pump including hydraulic drive, without pumping element version C3 6 kg, 12.6 lbs reservoir; included ATEX approval: gas: II 2G Ex h IIC T6...T5 Gb dust: II 2D Ex h IIIC T85°C...T100°C Db mining: I M2
PFHM-6-B6-C5-ATEX	same as above, with an improved corrosion standard C5-M included ATEX approval: gas: II 2G Ex h IIB T6...T5 Gb dust: II 2D Ex h IIIC T85°C...T100°C Db mining: I M2

¹⁾ Please order pump elements separately



PFHM-ATEX accessories - pump elements, spring return

Order number		Description	Metering quantity ¹⁾			
C3 version	C5 version		cm ³ /stroke	in ³ /stroke	cm ³ /min	in ³ /min
KFG1.U0	KFG1.U0-C5M	pump element	0,250	0.0152	5,0	0.305
KFG1.U1	KFG1.U1-C5M	pump element	0,125	0.0076	2,5	0.152
KFG1.U2	KFG1.U2-C5M	pump element	0,090	0.0054	1,8	0.109
KFG1.U3	KFG1.U3-C5M	pump element	0,065	0.0039	1,3	0.079
KFG1.U4	KFG1.U4-C5M	pump element	0,040	0.0024	0,8	0.048

¹⁾ The values given are design values of the pump elements and are valid at 20 rpm, a temperature of 20 °C, a back pressure of 50 bar and when using NLGI grade 2 greases.



Pressure regulating valves

Order number		Description	Pipe Ø	Opening pressure ¹⁾	
C3 version	C5 version		mm	bar	psi
161-210-075	161-210-079	pressure regulating valve	6	250	3 626

¹⁾ These valves have opening tolerances of ±20%.

Pump unit

RA 20/45



Product description

The RA 20/45 radial piston pump features a modular design that enables use of up to three stackable pump elements, and outlet reduction or extension can be achieved easily.

The displacement of all outlets from a pump element is adjustable by a common setting device with a range of 33 to 100%. The grease reservoir contains a stirrer and screw conveyor to pressurize the grease into the suction chamber. This feature, in combination with a wide range of different selectable gear ratios, enables a small and continuous lubricant flow without the use of extra on/off timers.

Features and benefits

- Modular, pump-to-point solution for 1 to 12 lubrication points
- Suitable for standard NLGI 2 greases
- Grease reservoir for 2 or 4.5 kg (4.4 to 10 lb), optional level switch
- Covers feed rates of droplets up to 10 cm³/min (0.6 in³/min)
- Simple system design with adjustable outputs
- Economical, multi-line grease pump

Applications

- Compact machinery
- Conveyor systems
- Water pumps

Technical data

Function principle	radial piston pump with stackable pumping elements, rotary or electrically operated
Metering quantity per outlet	0,007–0,02 cm ³ /revolution 0,0004–0,0012 in ³ /revolution
Outlets	1 to 12 (max. 3 elements with 1, 2 or 4 outlets)
Lubricant	grease: up to NLGI 2
Operating peak pressure	max. 63 bar, 913 psi
Operating temperature	–15 to +40 °C, +5 to 104 °F
Protection class	IP 55
Reservoir ¹⁾	2,0 or 4,5 kg, 4.4 or 10 lb
Internal ratio	5:1, 10,5:1, 15:1, 25:1, 75:1, 125:1
Drive speed	10 to 245 min ⁻¹
E-motor drive	with 3-phase motor
Outlet connection	G 1/8
Dimensions	depending on the model min. 353 × 180 × 180 mm max. 660 × 325 × 180 mm min. 13.9 × 7.1 × 7.1 in max. 26 × 12.8 × 7.1 in
Mounting position	vertical
Options	with level switch

¹⁾ Valid for ρ=1 kg/dm³

NOTE

For further technical information, technical drawings, accessories, spare parts or product function descriptions, see the following publication available on SKF.com/lubrication:
11103 EN, 951-170-230 EN

Pump unit

P 205



Product description

The P 205 high-pressure, multi-line pump can supply lubricant directly to lubrication points or can be used as a centralized lubrication pump in large-sized progressive systems. It can drive up to five elements, which are available in varying sizes for optimum adjustability. The pump's drive and eccentric shaft design, high-efficiency worm gear, minimal number of parts and multi-range motor provide several advantages. P 205 pumps are available with a three-phase flange mount and multi-range motor or with a free shaft end for use with other motors. Various gear ratios and reservoir sizes with or without level control are offered.

Features and benefits

- Durable, versatile and reliable pump series
- Suitable for grease or oil
- Designed for continual lubrication of machines and systems operating in harsh environments
- Broad range of output options
- Modular design and easy maintenance

Applications

- Stationary machines with a high lubricant consumption
- Turbines in hydro-electric power plants
- Needling machines
- Screens and crushers in quarries
- Material handling equipment

Technical data

Function principle	electrically operated, multi-piston pump
Metering quantity per stroke	0,04–0,23 cm ³ 0.002–0.014 in ³
Output per outlet	0,08–4,20 cm ³ /min, 0.005–0.256 in ³ /min
Outlets	1 to 5
Lubricant	oil: viscosity from 40 mm ² /s grease: up to NLGI 2
Operating pressure	max. 350 bar, 5 075 psi
Operating temperature	–20 to +40 °C, –4 to +104 °F
Protection class	IP 55
Materials	steel plate or plastic, depending on reservoir
Reservoir ¹⁾	plastic: 4 and 8 kg, 8.8 and 17.6 lb steel: 5, 10 and 30 kg, 11; 22 and 66 lb
Line connection	G 1/4
Drive speed main shaft	grease: < 25 min ⁻¹ , oil: < 25 min ⁻¹
Electrical connections	380–420 V AC/50 Hz, 440–480 V AC/60 Hz 500 V AC/50Hz
Dimensions	depending on the model min. 406 × 280 × 230 mm max. 507 × 365 × 300 mm min. 160 × 110 × 91 in max. 200 × 144 × 118 in
Mounting position	vertical
Options	several different level switches; ATEX versions

¹⁾ valid for $\rho=1 \text{ kg/dm}^3$



NOTE

For further technical information, technical drawings, accessories, spare parts or product function descriptions, see the following publication available on SKF.com/lubrication:
13651 EN

Pump unit

P 205

Identification code	P 205 - - - - -
Product series	
Drive	M = AC flange gear motor F = free shaft end
Gear ratio	280 = 280:1 700 = 700:1 070 = 70:1
Reservoir	4 = plastic, 4 l, 1.05 gal 8 = plastic, 8 l, 2.11 gal 5 = steel plate, 5 l, 1.32 gal 10 = steel plate, 10 l, 2.64 gal 30 = steel plate, 30 l, 7.93 gal
Reservoir design	N = without level control XY = for grease and oil XL = for grease with low level control BU = with level control (ultrasonic sensor for two switching points, low- and high-level)
Pump elements; define max. 5 elements (f.i. 4 elements K6 = 4K6, ...)	K 5 = piston Ø 5 mm, output per stroke: 0,11 cm ³ , 0.006 in ³ K 6 = piston Ø 6 mm, output per stroke: 0,16 cm ³ , 0.009 in ³ K 7 = piston Ø 6 mm, output per stroke: 0,23 cm ³ , 0.014 in ³ KR = adjustable output, piston Ø 7 mm, output per stroke: 0,04–0,18 cm ³ , 0.002–0.010 in ³
Supplements to motor designation	320 - 420, 440 - 480 = multi-range motor for nominal supply voltage, 380-420 V AC/50 Hz, 440-480 V AC/60 Hz 500 = single-range motor for nominal supply voltage, 500 V/50 Hz 000 = pump without motor, with coupling flange

Order number	Description	Metering quantity per stroke	
		cm ³	in ³
600-26875-2	pump element piston K 5	0,11	0.006
600-26876-2	pump element piston K 6	0,16	0.009
600-26877-2	pump element piston K 7	0,23	0.014
655-28716-1	pump element adjustable KR (7)	0,04–0,18	0.002–0.010
303-19285-1	closing screw ¹⁾	–	–

¹⁾ for outlet port instead of a pump element

Order number	Description
624-29056-1	pressure-relief valve, 350 bar, G 1/4 D 6 for tube Ø 6 mm OD
624-29054-1	pressure-relief valve, 350 bar, G 1/4 D 8 for tube Ø 8 mm OD
304-17571-1	filling connector G 1/4 female ¹⁾
304-17574-1	filling connector G 1/2 female ¹⁾

¹⁾ filling connector fits for vacant outlet ports



Pump unit

FF



Product description

The multi-line pump unit of the FF series is suitable for small- and medium-sized systems due to its flow rate and reservoir. The lubricant can be fed to the lubrication points directly or via a progressive feeder. Designed for use with oil and stiff grease, the FF is a sturdy, vibration-resistant pump that withstands harsh environments and continuous operation.

Features and benefits

- Designed for small- and medium-sized systems
- Sturdy and vibration resistant
- Suitable for oils and very stiff greases
- Withstands harsh operating conditions and continuous operation

Applications

- Automotive industry and wind energy systems
- Construction materials machinery
- Tunnel-driving machinery, mining and conveyor systems
- Paper and boxing machinery
- Steel and heavy industry; annealing machines



Technical data

Function principle	radial piston pump with stirrer, electrically operated
Operating temperature	-15 to +40 °C, +5 to 104 °F
Operating pressure	125 to 350 bar, 1 800 to 5 075 psi
Lubricant	oil: mineral- and synthetic-based; viscosity from 50 mm ² /s grease: up to NLGI 3
Reservoir ¹⁾	4 and 10 kg, 8.8 and 22 lbs
Metering quantity per stroke	KR 6: 0,027–0,08 cm ³ , 0.0016–0.0048 in ³ KR 8: 0,05–0,15 cm ³ , 0.003–0.009 in ³ KR 10: 0,077–0,23 cm ³ , 0.005–0.014 in ³
Internal ratio	33:1, 80:1, 150:1, 300:1, 600:1
Outlet connection	1/4 NPTF, tube Ø 6, 8, 10 mm OD
E-motor drive	with 3-phase motor
Drive speed main shaft	< 32 min ⁻¹
Dimensions	min. 450 × 370 × 230 mm max. 656 × 370 × 230 mm min. 17.7 × 14.6 × 9 in max. 25.8 × 14.6 × 9 in
Protection class	IP 55
Mounting position	vertical
Options	several different reservoir designs for oil and grease, level switches, ATEX versions, pressure-limiting valves

¹⁾ valid for ρ=1 kg/dm³

NOTE

For further technical information, technical drawings, accessories, spare parts or product function descriptions, see the following publication available on SKF.com/lubrication:
14129; 951-170-201; 951-180-076

Pump unit

P 212



Product description

The P 212 is a high-pressure, multi-line pump that can drive up to 12 elements. It is capable of handling direct supply of lubrication points in multi-line systems or can be used as a centralized lubrication pump in large-sized progressive systems. The drive and eccentric shaft design, high-efficiency worm gear and minimal number of parts provide the pump with several advantages. P 212 pumps are available with a powerful, three-phase, multi-range motor. Suitable for both grease and oil, the reservoir is offered with or without level control.

Features and benefits

- High output per pump element
- High pressure even with difficult lubricants
- Due to the high element output, no element crossporting necessary
- Sturdy and durable pump series that operates in harsh environments
- Modular design
- Easy maintenance

Applications

- Machines with a high lubricant consumption
- Tunnel boring machines
- Mining
- Rubber-mixing machines as a pump for plasticizer liquid

Technical data

Function principle	radial piston pump with stirrer, electrically operated
Outlets	1 to 12
Operating temperature	-20 to +40 °C, -4 to +104 °F
Lubricant	mineral and synthetic oil and grease oil: viscosity from 40 mm ² /s grease: up to NLGI 2
Operating pressure	max. 350 bar, 5 075 psi
Metering quantity per stroke	Piston KR 7: 0,11–0,39 cm ³ ; 0,0067–0,024 in ³ Piston KR 12: 0,33–1,12 cm ³ ; 0,02–0,07 in ³
Reservoir ¹⁾	30 kg, 66 lb
Outlet connection	G 3/8
Internal ratio	67:1
Output per outlet	2,5–25 cm ³ /min, 0,15–1,5 in ³ /min
Drive speed main shaft	< 22 min ⁻¹
E-motor drive	with 3-phase motor
Dimensions	880 × 510 × 350 mm 34,65 × 20,08 × 13,78 in
Protection class	IP 55
Mounting position	vertical

NOTE

For further technical information, technical drawings, accessories, spare parts or product function descriptions, see the following publication available on SKF.com/lubrication:
15301

Pump unit

P 212

Identification code	P	212	-	MG	067	-	30	-		-	380-480
Product series											
Drive											
MG = AC flange motor											
Gear ratio											
067 = 67:1											
Reservoir											
30 = steel plate, 30 l, 7.92 gal											
Reservoir design											
XY = for grease and oil											
N = without level control											
BU = with level control (ultrasonic sensor for two switching points, low- and high-level)											
Pump elements; define max. 12 elements (f.i. 4 elements KR 12 = 4KR 12, ...)											
KR 7 = adjustable; piston Ø 7 mm; output per stroke: 0,11–0,39 cm ³ ; 0.0067–0.024 in ³											
KR 12 = adjustable; piston Ø 12 mm; output per stroke: 0,33–1,12 cm ³ ; 0.02–0.07 in ³											
Motor designation, supplements											
380–480 = multi-range motor for 380–420 V AC/50 Hz, 440–480 V AC/60 Hz											

Pump units for grease



P 212 pump elements and pressure-relief valves

Order number	Description	Connection	Operating pressure max.	
			bar	psi
660-77835-1	pump element KR 7	G 3/8	-	-
660-77619-1	pump element KR 12	G 3/8	-	-
303-17431-1	closing screw ¹⁾	M 27 x 1,5	-	-
624-25483-1	pressure-relief valve ²⁾	tube stud Ø10 mm	350	5 075
624-28362-1	pressure-relief valve ²⁾	tube stud Ø12 mm	350	5 075

¹⁾ for outlet port instead of a pump element
²⁾ to use via T-piece

Pump unit

P 215



Product description

The P 215 is a high-pressure, multi-line pump that can drive up to 15 pump elements. Different sizes of adjustable elements are available. It is capable of handling direct supply of lubrication points or can be used as a centralized lubrication pump in large-sized progressive systems.

P 215 pumps are available with a three-phase, multi-range motor, with a single-range motor, with a free shaft end for use with other motors, or with an oscillating drive. Various gear ratios and reservoirs of different sizes and materials are available. The reservoirs are suitable for both grease and oil and are offered with or without level control.

Features and benefits

- Sturdy and durable pump series
- Continual lubrication of machines and systems that operate in harsh environments
- Versatile pump regarding reservoir and drive types
- Broad range of output possibilities due to high number of outlets and different sizes of pump elements
- Modular design and easy maintenance

Applications

- Stationary machines with a high lubricant consumption
- Screens and crushers in quarries
- Material handling equipment
- Roller coasters

Technical data

Function principle	radial piston pump with stirrer; rotary, oscillating or electrically operated
Outlets	1 to 15
Operating temperature	-25 to +70 °C, -13 to +158 °F
Operating pressure	350 bar, 5 075 psi
Lubricant	mineral and synthetic oil and grease oil: viscosity from 20 mm ² /s grease: up to NLGI 2
Metering quantity per stroke	min. 0.11 cm ³ , 0.0067 in ³ max. 0.23 cm ³ , 0.014 in ³
Reservoir 1)	plastic: 4 and 8 kg, 8.8 and 17.6 lb steel: 10, 30 and 100 kg, 22; 67 and 220 lb
Internal ratio	7:1, 49:1, 100:1, 490:1
Output per Outlet	0.13 to 3.5 cm ³ /min, 0.008 to 0.21 in ³ /min
Outlet connection	G 1/4
E-motor drive	with 3-phase motor
Drive speed	< 28 min ⁻¹
Dimensions	min. 438 × 453 × 326 mm max. 1 225 × 600 × 550 mm min. 17.24 × 17.84 × 12.84 in max. 48.23 × 23.26 × 21.65 in
Protection class	IP 55
Mounting position	vertical
Options	hydraulic driven; 24 V DC motor
¹⁾ valid for ρ=1 kg/dm ³	

NOTE

For further technical information, technical drawings, accessories, spare parts or product function descriptions, see the following publication available on SKF.com/lubrication:
13651 EN

Pump unit

P 215

Identification code	P	215	-			-			-			-	
Product series													
Drive													
M = AC flange motor													
F = free shaft end													
P = oscillating drive													
Gear ratio													
490 = 490:1													
100 = 100:1													
049 = 49:1 (for oil only)													
007 = 7:1 (for P and F drive assemblies only)													
Reservoir													
4 = plastic, 4 l, 1.05 gal													
8 = plastic, 8 l, 2.11 gal													
10 = steel plate, 10 l, 2.64 gal													
30 = steel plate, 30 l, 7.92 gal													
100 = steel plate, 100 l, 26.42 gal													
Reservoir design													
YL = for oil with floating-switch, low-level													
XY = for grease and oil													
N = without level control													
BU = with level control (ultrasonic sensor for two switching points, low- and high-level)													
Pump elements, define max. 15 elements (f.i. 11 elements K 7 = 11K7, ...)													
1-15 = number of pump elements, adjustable													
K 5 = piston Ø 5 mm, max. adjustable output per stroke: 0,11 cm ³ , 0.0067 in ³													
K 6 = piston Ø 6 mm, max. adjustable output per stroke: 0,16 cm ³ , 0.0098 in ³													
K 7 = piston Ø 7 mm, max. adjustable output per stroke: 0,23 cm ³ , 0.014 in ³													
Motor designation, supplements													
320-420, 440-480 = multi-range motor for nominal supply voltages, 380-420 V AC/50 Hz, 440-480 V AC/60 Hz													
500 = single-range motor for nominal supply voltages, 500 V/50 Hz													
000 = pump without motor, with coupling flange													



P215 pump elements and pressure-relief valves

Order number	Description	Connection	Operating pressure max.	
			bar	psi
600-27464-2	pump element K 5	G 1/4	-	-
600-25046-3	pump element K 6	G 1/4	-	-
600-25047-3	pump element K 7	G 1/4	-	-
303-19285-1	closing screw ¹⁾	M 22 x 1,5	-	-
624-25478-1	pressure-relief valve ²⁾	tube stud Ø 6 mm	200	2900
624-25479-1	pressure-relief valve ²⁾	tube stud Ø 6 mm	350	5075
624-25480-1	pressure-relief valve ²⁾	tube stud Ø 8 mm	200	2900
624-25481-1	pressure-relief valve ²⁾	tube stud Ø 8 mm	350	5075
624-25482-1	pressure-relief valve ²⁾	tube stud Ø 10 mm	200	2900
624-25483-1	pressure-relief valve ²⁾	tube stud Ø 10 mm	350	5075
304-17571-1	filler fitting ¹⁾	G 1/4 female, M 22 x 1,5	-	-

¹⁾ for outlet port instead of a pump element
²⁾ filling connector fits for vacant outlet ports

Pump unit

FB / FB - XL



Product description

The FB multi-line pump unit is equipped standard with a motor enclosure of protection class IP 55 or better. The pump is available in a design for explosive atmospheres (ATEX) on request. There are also different fill-level switches for various applications and lubricants. We recommend the U2 ultrasonic design as the standard fill-level switch.

When the FB pump is used as an oil lubrication pump, the reservoir can be equipped with an oil-level monitor and fill-level switch "W". The oil-level monitor is designed and fitted in accordance with the customer's specific requirements as stated when ordering. Additionally, a specialized filling device and a visual fill-level indicator can be installed.

Features and benefits

- Sturdy, vibration-resistant multi-line pump
- Suitable for oil and very stiff greases
- Withstands harsh operating conditions and continuous operation
- Suitable for large systems
- Lubricant can be fed directly to lubrication points or via progressive feeder system

Applications

- Automotive industry and wind energy systems
- Construction materials machinery
- Tunnel-boring and mining, conveyor systems
- Paper and packaging machinery
- Steel and heavy industry



Technical data

Function principle	radial piston pump with stirrer
Operating temperature	-15 to +40 °C, +5 to 104 °F
Operating pressure	125 to 350 bar, 1 800 to 5 075 psi
Outlets	1–24
Lubricant	oil: viscosity from 40 mm ³ /s grease: up to NLGI 3
Metering quantity per stroke	
KR 6:	0,027–0,08 cm ³ , 0.0016–0.0048 in ³
KR 8:	0,050–0,15 cm ³ , 0.0030–0.0091 in ³
KR 10:	0,077–0,23 cm ³ , 0.0047–0.0140 in ³
for FB-XL lower level KR 7:	0,11 – 0,39 cm ³ , 0.0067–0.0237 in ³
for FB-XL lower level KR 12:	0,33–1,12 cm ³ , 0.020–0.068 in ³
Reservoir ¹⁾	6, 15, 30 kg, 13.2, 33, 66 lb
Outlet connection	1/4 NPTF, tube Ø 6, 8, 10 mm OD
Internal ratio	45:1, 105:1, 288:1, 720:1
Output per outlet	0,04–7,7 cm ³ /min 0.0024–0.47 in ³ /min
Drive speed main shaft	< 32 min ⁻¹
E-motor drive	with 3-phase motor
Dimensions	min. 420 × 533 × 290 mm max. 660 × 533 × 290 mm min. 16.5 × 26 × 11.4 in max. 26 × 26 × 11.4 in
Protection class	IP 55
Mounting position	vertical
Options	ATEX versions, safety valves

¹⁾ valid for ρ=1 kg/dm³

NOTE

For further technical information, technical drawings, accessories, spare parts or product function descriptions, see the following publication available on SKF.com/lubrication:
1-3026; 951-170-21; 951-170-201;
951-170-227; 951-180-076

Pump unit

FB - XL

Identification code	FB	30	2M	04	H						D	4145	AF	07
Product series	FB													
Reservoir	30 = 30 kg, 66 lb													
Level indicator	X = without J = min/max level and pre-warning, 4 switching points, 30 V DC													
Drive	2M = motor drive with single gear reduction													
Drive speed	04 = 45:1													
Drive position	H = 2M													
Pump elements, upper level Ø 6 mm (define max. 8 elements)	0-8 = number of pump elements, piston Ø 6 mm; p _{max} = 350 bar; 5 075 psi													
Pump elements, upper level Ø 8 mm (define max. 8 elements)	0-8 = number of pump elements, piston Ø 8 mm; p _{max} = 200 bar, 2 900 psi													
Pump elements, upper level Ø 10 mm (define max. 8 elements)	0-8 = number of pump elements, piston Ø 10 mm; p _{max} = 125 bar; 1 800 psi													
Pump elements large, lower level Ø 7 mm (define max. 8 elements)	0-8 = number of large pump elements, piston Ø 7 mm; p _{max} = 350 bar; 5 075 psi													
Pump elements large, lower level Ø 12 mm (define max. 8 elements)	0-8 = number of large pump elements, piston Ø 12 mm; p _{max} = 350 bar; 5 075 psi													
Connection tube Ø OD	A = 6 mm C = 10 mm B = 8 mm D = 1/4 NPT-internal thread													
Modification index	D = standard													
Design	4145 = FB-XL standard version, with E-motor 0,55 kW, upper level for small pump elements, lower level for large pump elements													
Motor code 1)	AG = 1 000 min ⁻¹ , for 230-400 V AC/50 Hz AF = 1 500 min ⁻¹ , for 230-400 V AC/50 Hz AL = 1 000 min ⁻¹ , for 290-500 V AC/50 Hz AK = 1 500 min ⁻¹ , for 290-500 V AC/50 Hz AP = 1 000 min ⁻¹ , for 400-690 V AC/50 Hz AO = 1 500 min ⁻¹ , for 400-690 V AC/50 Hz													
Protection class 1)	07 = IP 55, ATEX on request													

1) Other models on request

Pump unit

FB/FB - XL/FF Accessories



Pump elements for oil and grease FF, FB and FB-XL upper level

Order number	Piston
	Ø mm
24-1557-3680	6
24-1557-3681	8
24-1557-3683	10

Pump element for oil and grease, FB-XL lower level, P 212 ¹⁾

Order number	Piston
	Ø mm
660-77835-1	7
660-77619-1	12

Pressure-limiting valves for grease pump elements FF, FB and FB-XL upper level ¹⁾

Order number	Pressure	
	bar	psi
24-2103-2273	50	725
24-2103-2344	100	1 450
24-2103-2345	125	1 815
24-2103-2342	150	2 175
24-2103-2272	175	2 540
24-2103-2346	200	2 900
24-2103-2271	350	5 075

Outlet stud

Order number	Tube
	Ø mm
24-2255-2003	6
24-2255-2004	8
24-2255-2005	10

¹⁾ pressure-limiting valve see chapter valves

¹⁾ for direct assembly for each pump element (instead of the closure plug)

Pump unit

P 230



Product description

A derivative of the P 215 pump, the P 230 is a high-pressure, multi-line pump that can drive up to 30 adjustable pump elements. It is used within a multi-line system to directly supply lubrication points or within large-sized progressive systems. Due to the increased number of possible pump elements compared to the P 215, a powerful 0,25 kW motor is used.

P 230 pumps are available with a three-phase, multi-range motor or a single-range motor, and various gear ratios are offered. Suitable for grease or oil, reservoirs are available in different sizes with or without level control.

Features and benefits

- Sturdy and durable pump series
- Continual lubrication of machines and systems that operate in harsh environments
- Broad range of output options due to increased number of outlets and varying sizes of adjustable pump elements
- Modular design and easy maintenance

Applications

- Stationary machines with high lubricant consumption
- Rubber- and plastic-mixing machines
- Conveyors
- Cranes
- Eccentric presses
- Forging machines



Technical data

Function principle	radial piston pump with stirrer, rotary, oscillating or electrically operated
Outlets	1 to 30
Operating temperature	-20 to +40 °C, -4 to +104 °F
Lubricant	mineral and synthetic oil and grease oil: viscosity from 20 mm ² /s grease: up to NLGI 2
Operating pressure	max. 350 bar, 5 075 psi
Metreing quantity per stroke	min. 0,11 cm ³ , 0.0067 in ³ max. 0,23 cm ³ , 0.014 in ³
Reservoir ¹⁾	30 and 100 kg, 66 and 220 lb
Internal ratio	49:1, 100:1, 490:1
Output per outlet	0,13–6,4 cm ³ /min, 0.008–0.39 in ³ /min
Outlet connection	G 1/4
E-motor drive	with 3-phase motor
Drive speed	< 28 min ⁻¹
Dimensions	min. 840 × 463 × 330 mm max. 1300 × 463 × 550 mm min. 33.07 × 18.23 × 12.99 in max. 51.18 × 18.23 × 21.65 in
Options	hydraulic drive; 24 V DC motor

¹⁾ valid for ρ=1 kg/dm³

NOTE

For further technical information, technical drawings, accessories, spare parts or product function descriptions, see SKF.com/lubrication.

Pump unit

P 230

Identification code	P	230	-		-		-		-	
Product series										
Drive										
MG	= AC flange gear motor									
F	= free shaft end									
Gear ratio										
490	= 490:1									
100	= 100:1									
049	= 49:1 (for oil only)									
Reservoir										
30	= steel plate, 30 l, 7.92 gal									
100	= steel plate, 100 l, 26.42 gal									
Reservoir design										
YL	= for oil with floating-switch low level									
XY	= for grease and oil									
N	= without level control									
BU	= with level control (ultrasonic sensor for two switching points, low- and high-level)									
Pump elements, adjustable, define max. 30 elements (f.i. 25 elements K6 = 25K6, ...)										
1-30	= number of pump elements									
K 5	= piston Ø 5 mm, max. adjustable output per stroke: 0,11 cm ³ , 0.0067 in ³									
K 6	= piston Ø 6 mm, 0.236 in, max. adjustable output per stroke: 0,16 cm ³ , 0.0098 in ³									
K 7	= piston Ø 7 mm, 0.275 in, max. adjustable output per stroke: 0,23 cm ³ , 0.014 in ³									
Supplements to motor designation										
380-420, 440-480	= multi-range motor for nominal supply voltages, 380-420 V AC/50 Hz, 440-480 V AC/60 Hz									
500	= single-range motor for nominal supply voltages, 500 V AC/50 Hz									
000	= pump without motor, with coupling flange									



P 230 pump elements and pressure-relief valves

Order number	Description	Connection	Pressure max	
			bar	psi
600-27464-2	pump element K 5	G 1/4	-	-
600-25047-3	pump element K 7	G 1/4	-	-
600-25046-3	pump element K 6	G 1/4	-	-
303-19285-1	closing screw ¹⁾	M22 x 1,5	-	-
624-25478-1	pressure-relief valve	tube stud Ø 6 mm	200	2 900
624-25479-1	pressure-relief valve	tube stud Ø 6 mm	350	5 075
624-25480-1	pressure-relief valve	tube stud Ø 8 mm	200	2 900
624-25481-1	pressure-relief valve	tube stud Ø 8 mm	350	5 075
624-25482-1	pressure-relief valve	tube stud Ø 10 mm	200	2 900
624-25483-1	pressure-relief valve	tube stud Ø 10 mm	350	5 075
304-17571-1	filler adapter	G 1/4 female ²⁾	-	-
304-17574-1	filler adapter	G 1/2 female ²⁾	-	-

¹⁾ for outlet port instead of a pump element
²⁾ for connection to vacant outlet ports



SKF

52

LINCOLN

Overview of control units

Manually operated pumps									
Product	Description ¹⁾	Voltage		Timer	Level monitoring	Pulse evaluation	Without housing	Stand alone	Page
		VAC	VDC						
IGZ ...	only for one pump	115–230	24	•	•	–	•	–	54
EXZT ...	for one pump and one pulse generator	115–230	24	•	•	•	•	–	54
EOT-2	only for one pump	–	12, 24	•	–	–	–	•	56
LMC 2	for one pump and one pulse generator	230	24	•	•	•	–	•	57
LMC 301	. six pulse generators (with extension 10 extra)	90–264	24	•	•	•	–	•	58
					•	•			

Control unit

IGZ/EXZT



Product description

IGZ 51 and EXZT universal electronic control and monitoring devices are used in multi-line and progressive lubrication systems and are available in two voltage versions. Developed for stationary industrial applications, these devices may be installed in a switching cabinet or internally in a compact lubrication unit. They can be used as time-dependent or pulse-dependent controllers to initiate a lubrication cycle.

The EXZT devices control the pump running time and monitors simultaneously the strokes of the pulse generator or sensor of the metering device. All devices have custom-built functions integrated and can be set to meet system requirements.

Features and benefits

- Combined universal control and monitoring device
- Easy installation by top hat rail mounting
- Adjustable operating modes
- Time operation or load-dependent, machine-stroke operation
- Low-level control and EPROM included

Applications

- Stationary industrial applications
- Installation in switching cabinet of stationary general industry machines

Technical data

Function principle	universal electronic control and monitoring device
Operating temperature	0 to +60 °C, +32 to 140 °F
Output voltage	24 V DC +10%/-15%
Connector for class	II
Protection class	IP 30, clamps IP 20
Dimensions	70 × 75 × 110 mm 2.7 × 3 × 4.3 in

Version + 471

Input voltage	100 – 120 VAC; 200 – 240 VAC
Input current rated	70 mA / 35 mA
Power input	8 W
Frequency	50 – 60 Hz
Fuse	max. 6.3 A
Switching current	max. 5 A
Input voltage sensors	24 V DC

Version + 472

Input voltage	20 – 24 V DC; 20 – 24 VAC
Input current rated	75 mA at max. fan-out of 250 mA
Power input	5 W
Frequency	DC or 50 – 60 Hz
Fuse	max. 6.3 A
Switching current	max. 5 A
Input voltage sensors	24 V DC

NOTE

For further technical information, technical drawings, accessories, spare parts or product function descriptions, see the following publications available on SKF.com/lubrication:

1-1700-1 EN, 1-1700-2 EN, 951-180-001 EN

Control unit

IGZ/EXZT

Order information

Order number	Input voltage	Monitoring time adjustable	Level monitoring	Interval time extension	Lubricant levels early warning, contact	Pulse monitoring
IG351-10-E + 471	120, 230 VAC	•	NO ³⁾	•	–	–
IG351-10-E + 472	24 V DC	•	NO ³⁾	•	–	–
EXZT 2A03-E + 471	120, 230 VAC	•	NC ⁴⁾	•	•	•
EXZT 2A03-E + 472	24 V DC	•	NC ⁴⁾	•	•	•

¹⁾ Only for one pump

²⁾ For one pump and one pulse transmitter

³⁾ NO = contact normally open

⁴⁾ NC = contact normally closed

Control unit

EOT - 2



Product description

The EOT-2 controller is designed to control lubrication pumps during interval operation in multi-line systems. Rotary switches on the printed circuit board may be used to adjust lubrication time in seconds or minutes and pause time in minutes or hours. The EOT-2 is suitable for retrofit installation and often is used when a lubrication pump has no integrated control unit. Additional lubrication cycles can be triggered via a pushbutton.

Features and benefits

- Easy-to-use controller for installation, indoor and outdoor
- Suitable for retrofit, easy time setting and function control

Applications

- Lubrication pumps without integrated controller
- Agricultural machinery, chain lubrication systems
- Simple lubrication systems in machines
- In connection with motor relay assembly; also preferred for three-phase, multi-line pump units

Technical data

Function principle	control and monitoring device
Operating temperature	-25 to +70 °C, -13 to +158 °F
Supply voltage ¹⁾	12 or 24 V DC
Current draw	max. ≤ 7 A
Outputs	transistor / N.O.
Pause time	min. 4 min, max. 15 h
Running time	min. 8 sec, max. 30 min
Factory setting	
Pause time	6 h
Running time	6 min
Protection class	IP 65
Dimensions	122 × 118 × 56 mm, 4.80 × 4.65 × 2.00 in
Mounting position	any

¹⁾ For use with electrically driven, 3-phase pump, motor starter must be ordered separately.

Order information

Order number	Description
236-10850-7	EOT-2 controller with motor starter 0,4–0,6 A
236-10850-8	EOT-2 controller with motor starter 0,6–1,0 A
236-10850-9	EOT-2 controller with motor starter 1,0–1,6 A
236-10980-6	EOT-2 controller with motor starter 2,4–4,0 A
664-34135-7	EOT-2 controller, for one pump only



NOTE

For further technical information, technical drawings, accessories, spare parts or product function descriptions, see the following publication available on SKF.com/lubrication:
16966 EN, 951-170-232

Control unit

LMC 2



Product description

The LMC 2 is a controller for the electronic management and monitoring of lubrication systems. It combines the advantages of a specially developed printed circuit board (PCB) and a PLC in an economical, compact unit. For progressive systems, it controls the pump unit and the metering devices.

Features and benefits

- Integrated, flexible lubrication programs
- 8 inputs / 5 outputs; suitable for complex lubrication systems
- Time- or cycle-dependent control of lubrication intervals
- Can be interfaced with common field bus systems

Applications

- General lubrication systems with a pump and pulse generator
- ChaLMCin lubrication systems like Lincoln Cobra and PMA
- Multi-line as well as dual-line, single-line and progressive systems
- Food and beverage
- Railway

NOTE

For further technical information, technical drawings, accessories, spare parts or product function descriptions, see the following publication available on SKF.com/lubrication:
14004 EN

Technical data

Function principle	control and monitoring device
Operating temperature	-10 to +70 °C, -14 to +158 °F
Supply voltage	12 or 24 V DC
Inputs	max. 8 digital inputs
Outputs	4 relay outputs, 1 electronic
Operating voltage	depending on model: 230 V AC, 24 V DC (± 10%)
Standard	CE
Protection class	IP 54
Dimensions	200 × 120 × 90 mm, 7.9 × 4.7 × 3.5 in
Mounting position	any

Order information

Order number	Description
236-10980-2	motor starter 0,6 A; 24V DC
236-10980-3	motor starter 1,0 A; 24V DC
236-10980-4	motor starter 1,6 A; 24V DC
236-10980-5	motor starter 4,0 A; 24V DC
236-10980-9	motor starter 1,6 A; 230 V DC
236-10980-6	motor starter 4,0 A; 230 V DC

For use with electrically operated 3-phase pump must order motor starter separately.

Control unit

LMC 301



Product description

The LMC 301 is a compact, modularly expandable control and monitoring device. It is equipped with an LCD display and six functional keys for programming, parameter setting and signalization. The user is guided through the setup menu. Additionally, there is offered a simple-to-use PC software for parameter setting and diagnostics.

Features and benefits

- Integrated, flexible lubrication programs
- Main device with 10 digital inputs, for 3 lubrication pumps and max. 6 pulse transmitters
- Up to 7 slave/extension modules can be added with additional inputs for max. 10 pulse transmitters
- Three lubrication pumps can be controlled and monitored

Applications

- General and heavy industry
- Mining – stationary and mobile excavators
- Multi-, dual-, single-line and progressive systems

Technical data

Function principle	Control and monitoring device
Operating temperature	VAC: -10 to + 50 °C; +14 to 122 °F VDC: -40 to +70°C; -40 to 158 °F
Inputs	10 count, short-circuit proof, 2 with analog
Outputs	8 count, relay outputs NO-contact 8 A, 2 of which up to 15 A
Operating voltage	depending in model 100-240 VAC, 24 VDC ± 20%
Standard	CE; UL; CSA
Protection class	IP 65
Dimensions	270 × 170 × 90 mm 10.7 × 6.7 × 3.5 in
Mounting position	vertical

Order information

Order number	Designation
086500	LMC301; 24 V DC, master
086501	LMC301; 100-240 VAC, master
086502	LMC301; 24 V DC, I/O board, slave
086503	LMC301; 100-240 AC, I/O board, slave

NOTE

For further technical information, technical drawings, accessories, spare parts or product function descriptions, see the following publications available on SKF.com/lubrication:
15967 EN, 951-150-029 EN

LMC 301 - Accessories



LMC 301 motor relay assembly

Order number	Description
236-10850-7	with motor starter 0,4–0,6 A
236-10850-8	with motor starter 0,6–1,0 A
236-10850-9	with motor starter 1,0–1,6 A
236-10980-6	with motor starter 2,4–4,0 A

LMC 301 housing

Order number	Description
086500	door housing, complete

Motor starter 24V

Order number	Designation
236-10980-2	motor starter 0,6 A; 24V DC
236-10980-4	motor starter 1,6 A; 24V DC

Motor starter 230V

Order number	Designation
236-10980-7	motor starter 0,6 A; 230 V DC
236-10980-8	motor starter 1,0 A; 230 V DC
236-10980-6	motor starter 4,0 A; 230 V DC

Order numbers

Order number	Description
3515-10-6020 3515-10-6620	Cable glands PG-M20 ; complete, with cap nut, cable gasket set (2), screw plug cartridge (3) Cable gasket set (2); 2-wire, Ø 0.24 in Cable gasket set (2); 4-wire, Ø 0.2 in
3515-10-7620 3515-10-6220 3515-10-6320	Blind plug Gasket Counter nut
3515-07-2022 236-11066-1	Conduit glands, IP 65 , with flexible metal tube (FMC), UL approved Protection hose, liquid-proof protective; UL 360 (sold by the metre, when ordering specify the required length) Battery, 3 V lithium button cell, model CR3032
www.skf.com/LMC301	LMC 301 software , free download

¹⁾ The installation of the cable glands and cable sets to be provided and done by the customer. The customer is responsible for proper installation.



Overview of monitoring devices

Product finder							
Product	Function type	Description	Voltage		Without housing	Stand alone	Page
			V AC	V DC			
SP/SFE 30/5	pulse generator	standard version	0 - 30	0 - 30	–	•	62
SP/SFE 30/6 GL	pulse generator	GL approved	0 - 30	0 - 30	–	•	62
SP/SFE 30/3003	pulse generator	ATEX II2G .. and II2D ..	0 - 30	0 - 30	–	•	62
EWT2A	pulse monitor	for up to 3 pulse generators	115, 230	24	•	–	63
234-13161-5	digital pressure switch	pressure switch for extensive lubrication point monitoring	–	20-32	–	•	64
2340-00000108	analogue digital pressure switch	pressure switch for simple lubrication point monitoring	–	18-30	–	•	65

Monitoring devices

SP/SFE 30



Product description

SP/SFE30 pulse generators are designed to monitor oil and grease volumetric flow rates. The switching pulses are generated at a rate proportional to the volumetric flow, and the pulses from the pulse generator are evaluated by a downstream control unit. SP/SFE30/6GL pulse generators have been approved by German Lloyd for use on ships. Explosion proofed versions (SP/SFE 30/3003 ATEX) for gas and dust are available as well.


Features and benefits

- For oil and grease up to NLGI 2
- Operating pressure of up to 600 bar (8 700 psi)
- Germanischer Lloyd-approved device available

Applications

- For small lubricant flow measurements, in general
- Reciprocating compressors
- Oil and gas industry
- Marine

NOTE

 For further technical information, technical drawings, accessories, spare parts or product function descriptions, see the following publications available on SKF.com/lubrication:
1-3009 EN, 1-3018 EN; 951-230-012 EN

Technical data

Function principle	pulse generator based on a progressive metering principle
Operating temperature	-15 to +70 °C; +5 to 158 °F
Operating pressure	4 to 600 bar; 58 to 8 700 psi
Lubricant	oil min. viscosity 12 mm ² /s grease up to NLGI 2
Volumetric flow range	0,1–50 cm ³ /min; 0,0061–3,0512 in ³ /min
Volume/pulse ¹⁾	0,34 cm ³ ; 0,021 in ³
Contact type	reed contact
Connection	SP/SFE 30/5: plug DIN 43650
Switching voltage	SP/SFE 30/6 GL: cable 2 m, 6.56 ft
Switching capacity	0 to 30 V AC/V DC
Standard	10 W with V AC/V DC
Protection class	CE, GL (Germanischer Lloyd)
Dimensions	IP 67 65 × 170 × 35 mm; 2.56 × 6.69 × 1.37 in

¹⁾ One pulse comprises the opening or closing of the reed contact. Volume/cycle = 0,68 cm³ when a pulse monitoring unit is used (opening until reopening or closing to reclosing of reed contact).

Order information

Order number	Designation
--------------	-------------

24-2583-2516	SP/SFE 30/5
24-2583-2517	SP/SFE 30/6 GL
	SP/SFE 30/3003
24-2583-2526	ATEX II2G ... and ATEX II2D ...

SP/SFE 30 accessories

Order number	Description
--------------	-------------

406-411	straight connector G 1/4 for Ø 6 mm tube
96-1108-0058	straight connector G 1/4 for Ø 8 mm tube

EWT2A



Product description

The EWT2A series of universal pulse monitoring devices can be used in all standard SKF lubrication systems. The pulse, generated from a progressive metering valve sensor, a pulse generator or a rotary gear sensor, must be received within a pre-selected and defined value. Depending on the selected version, a minimum and a maximum value can be monitored simultaneously for two or three pulse inputs. The EWT2A pulse monitoring devices are available in two voltage versions and may be installed in a switching cabinet. All devices have custom-built functions integrated and can be set to meet system requirements.

Features and benefits

- Easy installation by top hat rail mounting
- Adjustable operating modes
- Monitoring time 6–90 seconds
- Settings possible from 0,01 to 2 500 pulses/minute

Applications

- In connection with a pulse generator for oil and grease to reliably monitor lubricant flow

Technical data

Function principle	universal electronic control and monitoring device
Operating temperature	0 to +60 °C +32 to 140 °F
Output voltage	24 V DC +10% / -15%
Dimensions	70 × 75 × 110 mm 2.7 × 3 × 4.3 in

Version + 471

Input voltage	100–120 V AC; 200–240 V AC
Input current rated	70 mA/35 mA
Power input	8 W
Frequency	50–60 Hz
Fuse	max. 6.3 A
Switching current	max. 5 A
Output voltage sensors	24 V DC

Version + 472

Input voltage	20 to 24 V DC; 20 to 24 V AC
Input current rated	75 mA at max. fan-out of 250 mA
Power input	5 W
Frequency	DC or 50–60 Hz
Fuse	max. 6.3 A
Switching current	max. 5 A
Output voltage sensors	24 V DC

Order information

Order number	Description
EWT2A01-S1-E+471	for up to 3 pulse generators, 115/230 V AC
EWT2A01-S1-E+472	for up to 3 pulse generators, 24 V DC
EWT2A04-S1-E+471	for up to 2 pulse generators, 115/230 V AC
EWT2A04-S1-E+472	for up to 2 pulse generators, 115/230 V AC

NOTE

For further technical information, technical drawings, accessories, spare parts or product function descriptions, see the following publications available on SKF.com/lubrication:
1-1700-5 EN, 951-180-001 EN

Monitoring devices

234-13161-5



Description

This compact, maintenance-free electronic pressure switch has a 3-digit, digital display, one switching output and an analog output signal for switching point and hysteresis. Both can be adjusted via push buttons. For optimum adaptation to a particular application, the instrument has many additional adjustment parameters, e.g. switching delay times, NO and NC function of the outputs.

Features and benefits

- Integrated pressure sensor with thin-film strain gauge on stainless steel membrane
- 3-digit, digital display
- Independently adjustable switch-back hysteresis and switching point
- Reverse polarity protection of the supply voltage, excess voltage, override and short-circuit protection are provided
- Password protected
- Directly installable via G 1/4 adapter into pressure line

Applications

- Marine and off-shore applications
- Steel and heavy industries
- Wind turbines
- Service vehicles



Technical data

Order number	234-13161-5
Function principle	digital pressure switch
Lubricant	oil, fluid grease and grease up to NLGI 2
Operating temperature	-25 to +80 °C; -13 to +175 °F
Operating pressure	max. 600 bar; max. 8 700 psi
Operating voltage	20–32 VDC
Output signal	1 × PNP, 4–20 mA
Current consumption	approx. 100 mA (without switching outlet)
Electrical connection	plug DIN 43650 (3pin+ PE) or plug 4-pin binder 714, M18 × 1 G1/4
Pressure port	IP 65
Protection class	IP 65
Dimensions	35 × 119 × 48 mm 1.37 × 4.68 × 1.89 in
Mounting position	any

NOTE

Further technical information, technical drawings, accessories, spare parts or product function descriptions available on SKF.com/lubrication.

2340-00000108



Description

This maintenance-free analogue pressure sensors is suitable for pressure measurements for gases and fluids. It is user friendly and can be applied easily in standard or superior applications. The space-saving housing is pivotable up to 320° for optimal readability of the 4-digit, digital display. Switching output for analogue or digital signals incl. IO-Link. It comes with reverse polarity protection of the supply voltage, excess voltage, override and short circuit protection. Different value units such as bar, mbar, psi or MPa can be selected.

Features and benefits

- IO-link incl. counter for operating hours, pressure peaks and inner temperature
- Menu-guided adjustments via push buttons
- Pre-adjustable hysteresis
- Programmable parameters, password protected
- Compact housing with 320° pivot

Applications

- Marine and off-shore applications
- Steel and heavy industries
- Wind turbines
- Service vehicles

Technical data

Order number	2340-00000108
Function principle	analogue/digital pressure switch
Lubricant	oil, fluid grease and grease up to NLGI 2
Approval	CE, EAC, UL/CSA
Operating temperature	-40 to +85 °C; -40 to +185 °F
Operating pressure	max. 600 bar; max. 8 700 psi
Overload pressure	1 000 bar; 14 500 psi
Burst pressure	1 570 bar; 22 770 psi
Operating voltage	18-30 VDC
Operating current	max. 150 mA
Current draw	≤ 50 mA
Output signal	2x PNP/NPN (NO/NC) adjustable
Analogue Output	voltage 0 .. 10 V / current 4 .. 20 mA adjustable
Interface	IO-Link 1.1
Switching frequency	170 Hz
Switching cycles	100 Mio.
Material:	
Housing	PA6.6, stainless steel 1.4301, FKM
Measuring cell	Ceramics Al2O3
Apapter	stainless steel
Electrical connection	M12x1; 4-pole, A-coded
Pressure port	G1/4
Protection class	IP 67
Dimensions	95 x 34 x 49 mm 3.74 x 1.33 x 1.92 in
Mounting position	any



NOTE

Further technical information, technical drawings, accessories, spare parts or product function descriptions available on SKF.com/lubrication.

Index

24-0254-2310	37	24-1721-2000.....	29	161-210-075.....	35
24-0254-2312	37	24-1721-2001.....	29	161-210-079.....	35
24-0254-2330	37	24-1721-2001.....	29	234-13161-5.....	64
24-0254-2331	37	24-1884-2324	23	236-10850-7	56
24-0254-2334	37	24-1884-2397	23	236-10850-7	59
24-0254-2335	37	24-2103-2271.....	49	236-10850-8	56
24-0404-2493	25	24-2103-2272	49	236-10850-8	59
24-0413-3490	29	24-2103-2273	49	236-10850-9	56
24-0651-3519.....	25	24-2103-2342	49	236-10850-9	59
24-0701-3000	29	24-2103-2344	49	236-10980-2	57
24-0701-3001	29	24-2103-2345	49	236-10980-2	59
24-0701-3002	29	24-2103-2346	49	236-10980-3	57
24-0701-3003	29	24-2255-2003	49	236-10980-4	57
24-0701-3004	29	24-2255-2004	49	236-10980-4	59
24-0701-3004	29	24-2255-2005	49	236-10980-5	57
24-0701-3070	29	24-2317-2017.....	31	236-10980-6	56
24-0701-3071.....	29	24-2578-2041.....	23	236-10980-6	57
24-0701-3072.....	29	24-2578-2044	23	236-10980-6	59
24-0701-3073.....	29	24-2583-2516	62	236-10980-6	59
24-0701-3074.....	29	24-2583-2517.....	62	236-10980-7	59
24-0701-3080	29	24-2583-2526	62	236-10980-8	59
24-0701-3081	29	44-0606-6302	13	236-10980-9	57
24-0701-3082	29	44-0717-2060.....	29	236-11066-1.....	59
24-0701-3083	29	44-0717-2061.....	29	303-17431-1.....	43
24-0701-3084	29	44-0717-2062.....	29	303-19285-1.....	39
24-0801-2070	29	44-0717-2063.....	29	303-19285-1.....	45
24-1557-3520.....	17	44-0717-2064.....	29	303-19285-1.....	51
24-1557-3520.....	29	44-0717-2069.....	29	304-17571-1.....	39
24-1557-3520.....	37	44-0717-2070.....	29	304-17571-1.....	45
24-1557-3521.....	17	44-0717-2070.....	37	304-17571-1.....	51
24-1557-3521.....	29	44-0717-2071.....	29	304-17574-1.....	39
24-1557-3521.....	37	44-0717-2071.....	37	304-17574-1.....	51
24-1557-3522.....	17	44-0717-2072.....	29	404-001.....	13
24-1557-3522.....	29	44-0717-2072.....	37	404-002	13
24-1557-3522.....	37	44-0717-2073.....	29	406-001.....	13
24-1557-3560.....	25	44-1202-2038	13	406-002	13
24-1557-3680.....	49	95-0006-0917	29	406-411.....	62
24-1557-3681.....	49	96-1108-0058	62	600-25046-3	45
24-1557-3683.....	49	161-140-050+924	23	600-25046-3	51
24-1721-2000.....	29	161-140-056+924.....	23	600-25047-3	45

Index

600-25047-3	51	6770-02504-3	15	PFHM-6-B6-C3-ATEX	35
600-26875-2	39	6770-02505-3	15	PFHM-6-B6-C5-ATEX	35
600-26876-2	39	6770-02506-3	15		
600-26877-2	39	6770-02507-3	15		
600-27464-2	45	6770-02508-4	15		
600-27464-2	51	6770-02509-4	15		
624-25478-1	45	6770-02510-4	15		
624-25478-1	51	6770-02513-4	15		
624-25479-1	45	086500	58		
624-25479-1	51	086500	59		
624-25480-1	45	086501	58		
624-25480-1	51	086502	58		
624-25481-1	45	086503	58		
624-25481-1	51	276517	19		
624-25482-1	45	880550	19		
624-25482-1	51	880551	19		
624-25483-1	43	880552	19		
624-25483-1	45	880560	19		
624-25483-1	51	DIN125-B6.4-ST	29		
624-28362-1	43	DIN125-B6.4-ST	29		
624-29054-1	39	DIN125-B6.4-ST	37		
624-29056-1	39	DIN934-M6-8	29		
655-28716-1	39	DIN934-M6-8	29		
660-77619-1	43	DIN934-M6-8	37		
660-77619-1	49	EWT2A01-S1-E+471	63		
660-77835-1	43	EWT2A01-S1-E+472	63		
660-77835-1	49	EWT2A04-S1-E+471	63		
664-34135-7	56	EWT2A04-S1-E+472	63		
744-000-0107	31	KFG1.U0	35		
2340-00000108	61	KFG1.U0-C5M	35		
2340-00000108	65	KFG1.U1	35		
3515-07-2022	59	KFG1.U1-C5M	35		
3515-10-6020	59	KFG1.U2	35		
3515-10-6220	59	KFG1.U2-C5M	35		
3515-10-6320	59	KFG1.U3	35		
3515-10-6620	59	KFG1.U3-C5M	35		
3515-10-7620	59	KFG1.U4	35		
6770-02501-3	15	KFG1.U4-C5M	35		
6770-02502-3	15	OCL-MK-0001300-3	15		
6770-02503-3	15	OCL-MK-0031200-3	15		

LINCOLN

SKF

! **Important information on product usage**

SKF and Lincoln lubrication systems or their components are not approved for use with gases, liquefied gases, pressurized gases in solution and fluids with a vapor pressure exceeding normal atmospheric pressure (1 013 mbar) by more than 0,5 bar at their maximum permissible temperature.

skf.com | skf.com/lubrication

© SKF and LINCOLN are registered trademarks of the SKF Group.

© SKF Group 2023

The contents of this publication are the copyright of the publisher and may not be reproduced (even extracts) unless prior written permission is granted. Every care has been taken to ensure the accuracy of the information contained in this publication but no liability can be accepted for any loss or damage whether direct, indirect or consequential arising out of the use of the information contained herein.

PUB LS/P1 17478 EN · June 2023

Certain image(s) used under license from Shutterstock.com