

The universal bearing for food contact Compliant with Regulation (EU) No. 10/2011 and FDA guidelines **iglidur® A181**



When to use it?

- When FDA compliance is required
- When a material compliant in accordance with Regulation (EU) No. 10/2011 is required
- When an universal material suitable for direct contact with food is required



When not to use?

- When Regulation (EU) No. 10/2011 and FDA compliance are not required
iglidur® J
- When continuous operating temperatures are higher than +90°C
iglidur® A350
- When a cost-effective universal plain bearing is required
iglidur® G, iglidur® P

Bearing technology | Plain bearing | iglidur® A181



Ø
4.0 – 50.0mm



Also available as:



Bar stock, round bar
Page 680

The universal bearing for food contact Compliant with Regulation (EU) No. 10/2011 and FDA guidelines

The iglidur® A181 material is compliant with Regulation (EU) No. 10/2011 and also with FDA specifications. The blue colour also facilitates the often required "optical detectability" in the food industry.

- Compliant with Regulation (EU) No. 10/2011
- FDA-compliant
- Universal installation
- High media resistance
- Wear-resistant
- Lubrication-free
- Maintenance-free



Bar stock, plate
Page 683



tribo-tape liner
Page 691

Typical application areas

- Food industry
- Beverage technology
- Medical technology



Piston rings
Page 584

Descriptive technical specifications

Wear resistance at +23°C	-	<div style="width: 100%; height: 10px; background-color: green;"></div>	+
Wear resistance at +90°C	-	<div style="width: 75%; height: 10px; background-color: green;"></div>	+
Wear resistance at +150°C	-	<div style="width: 50%; height: 10px; background-color: green;"></div>	+
Low coefficient of friction	-	<div style="width: 100%; height: 10px; background-color: green;"></div>	+
Low moisture absorption	-	<div style="width: 100%; height: 10px; background-color: green;"></div>	+
Wear resistance under water	-	<div style="width: 100%; height: 10px; background-color: green;"></div>	+
High media resistance	-	<div style="width: 100%; height: 10px; background-color: green;"></div>	+
Resistant to edge pressures	-	<div style="width: 100%; height: 10px; background-color: green;"></div>	+
Suitable for shock and impact loads	-	<div style="width: 100%; height: 10px; background-color: green;"></div>	+
Resistant to dirt	-	<div style="width: 100%; height: 10px; background-color: green;"></div>	+



Two hole flange bearings
Page 603



Moulded special parts
Page 624



igubal® spherical balls
Page 841

Online product finder
www.igus.eu/iglidur-finder

Online service life calculation
www.igus.eu/iglidur-expert

378 3D CAD, finder and service life calculation ... www.igus.eu/A181



Technical data

General properties		Testing method	
Density	g/cm ³	1.38	
Colour		blue	
Max. moisture absorption at +23°C and 50% r.h.	% weight	0.2	DIN 53495
Max. moisture absorption	% weight	1.3	
Coefficient of friction, dynamic, against steel	μ	0.10 – 0.21	
pv value, max. (dry)	MPa · m/s	0.31	
Mechanical properties			
Flexural modulus	MPa	1,913	DIN 53457
Flexural strength at +20°C	MPa	48	DIN 53452
Compressive strength	MPa	60	
Max. recommended surface pressure (+20°C)	MPa	31	
Shore D hardness		76	DIN 53505
Physical and thermal properties			
Max. application temperature long-term	°C	+90	
Max. application temperature short-term	°C	+110	
Min. application temperature	°C	-50	
Thermal conductivity	W/m · K	0.25	ASTM C 177
Coefficient of thermal expansion (at +23°C)	K ⁻¹ · 10 ⁻⁵	11	DIN 53752
Electrical properties			
Specific contact resistance	Ωcm	> 10 ¹²	DIN IEC 93
Surface resistance	Ω	> 10 ¹²	DIN 53482

Table 01: Material properties

Due to their technical specifications and their conformity with the relevant regulations, iglidur® A181 plain bearings are predestined for applications in food technology. Compared to iglidur® A180 with regard to the mechanical properties, temperature and media resistance, iglidur® A181 is more suitable with respect to the wear resistance in most cases.

Moisture absorption

Under standard climatic conditions, the moisture absorption of iglidur® A181 plain bearings is approximately 0.2% weight. The saturation limit in water is 1.3% weight. This must be taken into account for these types of applications.

Vacuum

In vacuum, any present moisture is released as vapour. Use in vacuum is only possible with dehumidified iglidur® A181 bearings.

Radiation resistance

Plain bearings made from iglidur® A181 are resistant up to a radiation intensity of 2 · 10²Gy.

Resistance to weathering

iglidur® A181 plain bearings are resistant to weathering. The material properties are slightly affected. Discoloration occurs.

Mechanical properties

With increasing temperatures, the compressive strength of iglidur® A181 plain bearings decreases. Diagram 02 shows this inverse relationship. The maximum recommended surface pressure is a mechanical material parameter. No conclusions regarding the tribological properties can be drawn from this.

Diagram 03 shows the elastic deformation of iglidur® A181 at radial loads.

Surface pressure, page 41



-50°C up to +90°C



31MPa



Lubrication-free made easy ... from stock ... no minimum order quantity 379

Permissible surface speeds

iglidur® A181 was developed for low surface speeds. Maximum speeds of up to 0.8m/s (rotating) and 3.5m/s (linear), respectively, are permissible during continuous dry operation. The given values in table 03 indicate the limits at which an increase up to the continuous permissible temperature occurs. This increase is a result of friction. In practice, though, this level is rarely reached, due to varying application conditions.

Surface speed, page 44

Temperature

The long-term upper temperature limit of +90°C permits the broad use in applications with direct contact with food. As shown in diagram 02, with increasing temperatures, the compressive strength decreases. When considering temperatures, the additional frictional heat in the bearing system must be taken into account. For temperatures over +60°C an additional securing is required.

Application temperatures, page 49

Additional securing, page 49

Friction and wear

Similar to wear resistance, the coefficient of friction μ also changes with the surface speed and load (diagrams 04 and 05). For iglidur® A181 plain bearings, the alteration of the coefficient of friction μ depends on surface speed and the shaft surface finish.

Coefficient of friction and surfaces, page 47

Wear resistance, page 50

Shaft materials

Diagram 06 shows results of testing different shaft materials with plain bearings made from iglidur® A181. Particular attention is paid in the food industry to the corrosion-resistant shaft types. Diagram 06 shows that very low wear rates can be achieved in combination with these shafts. As with many of the iglidur® materials, wear rate increases with otherwise identical parameters in rotation (diagram 07).

Shaft materials, page 52

Installation tolerances

iglidur® A181 plain bearings are standard bearings for shafts with h tolerance (recommended minimum h9). The bearings are designed for press-fit into a housing machined to a H7 tolerance. After being assembled into a nominal size housing, in standard cases the inner diameter automatically adjusts to the E10 tolerances.

Testing methods, page 57

Chemicals	Resistance
Alcohols	+
Diluted acids	0 up to -
Diluted alkalines	+
Fuels	+
Greases, oils without additives	+
Hydrocarbons	+
Strong acids	-
Strong alkalines	+ up to 0

All information given at room temperature [+20°C]

Table 02: Chemical resistance

Chemical table, page 1636

	Rotating	Oscillating	linear
long-term m/s	0.8	0.6	3.5
short-term m/s	1.2	1.0	5.0

Table 03: Maximum surface speeds

	Dry	Greases	Oil	Water
Coefficient of friction μ	0.10 – 0.21	0.08	0.03	0.04

Table 04: Coefficient of friction against steel (Ra = 1 μ m, 50HRC)

Ø d1 [mm]	Housing		Plain bearing		Shaft	
	H7 [mm]	E10 [mm]	E10 [mm]	h9 [mm]	h9 [mm]	h9 [mm]
0 – 3	+0.000	+0.010	+0.014	+0.054	-0.025	+0.000
> 3 – 6	+0.000	+0.012	+0.020	+0.068	-0.030	+0.000
> 6 – 10	+0.000	+0.015	+0.025	+0.083	-0.036	+0.000
> 10 – 18	+0.000	+0.018	+0.032	+0.102	-0.043	+0.000
> 18 – 30	+0.000	+0.021	+0.040	+0.124	-0.052	+0.000
> 30 – 50	+0.000	+0.025	+0.050	+0.150	-0.062	+0.000
> 50 – 80	+0.000	+0.030	+0.060	+0.180	-0.074	+0.000
> 80 – 120	+0.000	+0.035	+0.072	+0.212	-0.087	+0.000
> 120 – 180	+0.000	+0.040	+0.085	+0.245	-0.100	+0.000

Table 05: Important tolerances for plain bearings according to ISO 3547-1 after press-fit

Technical data

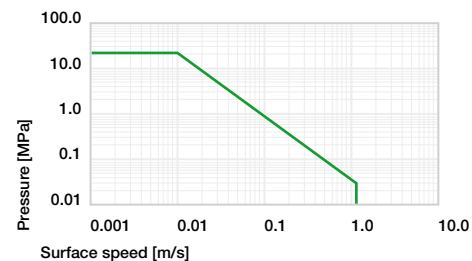


Diagram 01: Permissible pv values for iglidur® A181 plain bearings with a wall thickness of 1mm, dry operation against a steel shaft, at +20°C, mounted in a steel housing

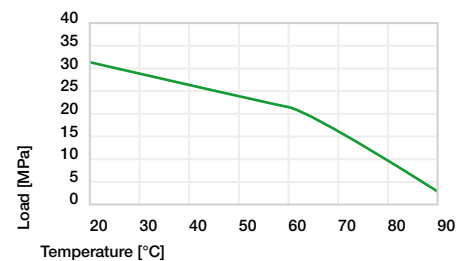


Diagram 02: Maximum recommended surface pressure as a function of temperature (31MPa at +20°C)

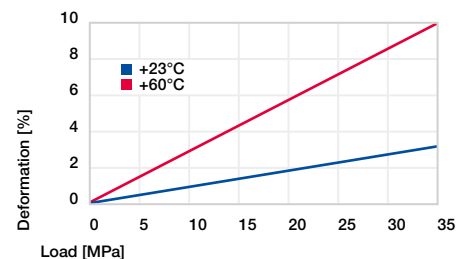


Diagram 03: Deformation under pressure and temperature

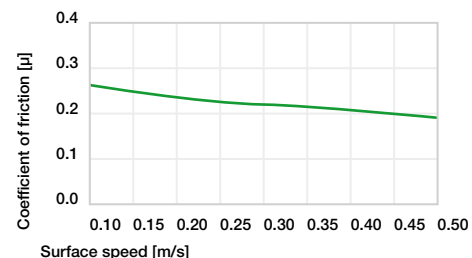


Diagram 04: Coefficient of friction as a function of the surface speed, p = 1MPa

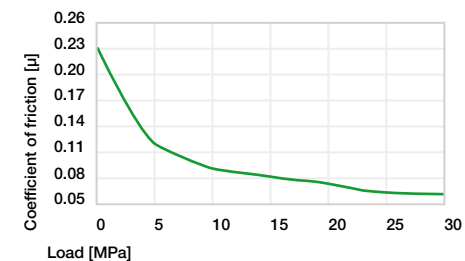


Diagram 05: Coefficient of friction as a function of the load, v = 0.01m/s

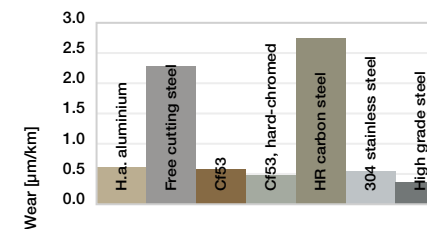


Diagram 06: Wear, rotating with different shaft materials, pressure, p = 1MPa, v = 0.3m/s

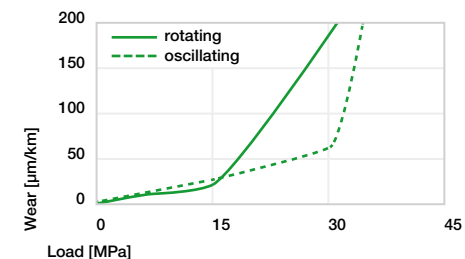
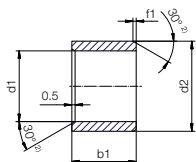


Diagram 07: Wear for oscillating and rotating applications with shaft material Cf53 hardened and ground steel, as a function of the load

Sleeve bearing (form S)



²⁾ Thickness < 0.6mm: Chamfer = 20°

Chamfer in relation to d1

d1 [mm]	Ø 1-6	Ø 6-12	Ø 12-30	Ø > 30
f1 [mm]	0.3	0.5	0.8	1.2

i Dimensions according to ISO 3547-1 and special dimensions

i Order example: **A181SM-0405-04** – no minimum order quantity.
A181 iglidur® material **S** Sleeve bearing **M** Metric **04** Inner Ø d1 **05** Outer Ø d2 **04** Total length b1

d1	d1	d2	b1	Part No.
[mm]	Tolerance ³⁾	[mm]	h13	
4.0		5.5	4.0	A181SM-0405-04
4.0		5.5	6.0	A181SM-0405-06
5.0	+0.020	7.0	5.0	A181SM-0507-05
5.0		7.0	10.0	A181SM-0507-10
6.0	+0.068	8.0	6.0	A181SM-0608-06
6.0		8.0	8.0	A181SM-0608-08
6.0		8.0	10.0	A181SM-0608-10
8.0		10.0	8.0	A181SM-0810-08
8.0		10.0	10.0	A181SM-0810-10
8.0		10.0	12.0	A181SM-0810-12
10.0	+0.025	12.0	8.0	A181SM-1012-08
10.0		12.0	10.0	A181SM-1012-10
10.0	+0.083	12.0	12.0	A181SM-1012-12
10.0		12.0	15.0	A181SM-1012-15
10.0		12.0	20.0	A181SM-1012-20
12.0		14.0	12.0	A181SM-1214-12
12.0		14.0	15.0	A181SM-1214-15
12.0		14.0	20.0	A181SM-1214-20
13.0		15.0	10.0	A181SM-1315-10
13.0		15.0	20.0	A181SM-1315-20
14.0		16.0	15.0	A181SM-1416-15
14.0	+0.032	16.0	20.0	A181SM-1416-20
14.0		+0.102	16.0	25.0
15.0			17.0	15.0
15.0		17.0	20.0	A181SM-1517-20
15.0		17.0	25.0	A181SM-1517-25
16.0		18.0	15.0	A181SM-1618-15
16.0		18.0	20.0	A181SM-1618-20
16.0		18.0	25.0	A181SM-1618-25

d1	d1	d2	b1	Part No.
[mm]	Tolerance ³⁾	[mm]	h13	
18.0		20.0	15.0	A181SM-1820-15
18.0	+0.032	20.0	20.0	A181SM-1820-20
18.0		+0.102	20.0	25.0
20.0			23.0	10.0
20.0		23.0	15.0	A181SM-2023-15
20.0		23.0	20.0	A181SM-2023-20
20.0		23.0	25.0	A181SM-2023-25
20.0		23.0	30.0	A181SM-2023-30
22.0		25.0	15.0	A181SM-2225-15
22.0		25.0	20.0	A181SM-2225-20
22.0		25.0	25.0	A181SM-2225-25
22.0		25.0	30.0	A181SM-2225-30
24.0		27.0	15.0	A181SM-2427-15
24.0		27.0	20.0	A181SM-2427-20
24.0	+0.040	27.0	25.0	A181SM-2427-25
24.0		+0.124	27.0	30.0
25.0			28.0	15.0
25.0		28.0	20.0	A181SM-2528-20
25.0		28.0	25.0	A181SM-2528-25
25.0		28.0	30.0	A181SM-2528-30
28.0		32.0	20.0	A181SM-2832-20
28.0		32.0	25.0	A181SM-2832-25
28.0		32.0	30.0	A181SM-2832-30
28.0		32.0	20.0	A181SM-3034-20
30.0		34.0	25.0	A181SM-3034-25
30.0		34.0	30.0	A181SM-3034-30
30.0		34.0	40.0	A181SM-3034-40
32.0	+0.050	36.0	20.0	A181SM-3236-20
32.0		+0.150	36.0	30.0

³⁾ After press-fit. *Testing methods, page 57*

Product range

d1	d1	d2	b1	Part No.
[mm]	Tolerance ³⁾	[mm]	h13	
32.0		36.0	40.0	A181SM-3236-40
35.0		39.0	20.0	A181SM-3539-20
35.0		39.0	30.0	A181SM-3539-30
35.0		39.0	40.0	A181SM-3539-40
35.0	+0.050	39.0	50.0	A181SM-3539-50
40.0		+0.150	44.0	20.0
40.0			44.0	30.0
40.0		44.0	40.0	A181SM-4044-40
40.0		44.0	50.0	A181SM-4044-50

³⁾ After press-fit. *Testing methods, page 57*

d1	d1	d2	b1	Part No.
[mm]	Tolerance ³⁾	[mm]	h13	
45.0		50.0	20.0	A181SM-4550-20
45.0		50.0	30.0	A181SM-4550-30
45.0		50.0	40.0	A181SM-4550-40
45.0		50.0	50.0	A181SM-4550-50
50.0	+0.050	55.0	20.0	A181SM-5055-20
50.0		+0.150	55.0	30.0
50.0			55.0	40.0
50.0		55.0	50.0	A181SM-5055-50
50.0		55.0	60.0	A181SM-5055-60

Available from stock
 Detailed information about delivery time online.
www.igus.eu/24

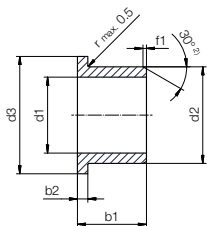
Online ordering
 Including delivery times, prices, online tools
www.igus.eu/A181

Ordering note
 Our prices are scaled according to order quantities, current prices can be found online.

Discount scaling		
1 – 9	50 – 99	500 – 999
10 – 24	100 – 199	1,000 – 2,499
25 – 49	200 – 499	2,500 – 4,999

No minimum order value.
No low-quantity surcharges.
Free shipping within Germany for orders above €150.

Flange bearing (form F)



²⁾ Thickness < 0.6mm: Chamfer = 20°

i Dimensions according to ISO 3547-1 and special dimensions

Chamfer in relation to d1

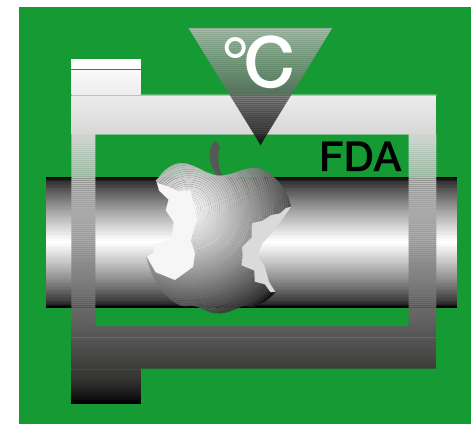
d1 [mm]	Ø 6–12	Ø 12–30	Ø > 30
f1 [mm]	0.5	0.8	1.2

i Order example: **A181FM-0608-04** – no minimum order quantity.
A181 iglidur® material **F** Flange bearing **M** Metric **06** Inner Ø d1 **08** Outer Ø d2 **04** Total length b1

d1	d1	d2	d3	b1	b2	Part No.
[mm]	Tolerance ³⁾	[mm]	d13 ³⁾	h13	h13	
6.0		8.0	12.0	4.0	1.00	A181FM-0608-04
6.0	+0.020	8.0	12.0	6.0	1.00	A181FM-0608-06
6.0	+0.068	8.0	12.0	8.0	1.00	A181FM-0608-08
8.0		10.0	15.0	5.5	1.00	A181FM-0810-05
8.0		10.0	15.0	7.5	1.00	A181FM-0810-07
8.0		10.0	15.0	9.5	1.00	A181FM-0810-09
8.0		10.0	15.0	10.0	1.00	A181FM-0810-10
10.0	+0.025	12.0	18.0	7.0	1.00	A181FM-1012-07
10.0	+0.083	12.0	18.0	9.0	1.00	A181FM-1012-09
10.0		12.0	18.0	10.0	1.00	A181FM-1012-10
10.0		12.0	18.0	12.0	1.00	A181FM-1012-12
10.0		12.0	18.0	17.0	1.00	A181FM-1012-17
12.0		14.0	20.0	7.0	1.00	A181FM-1214-07
12.0		14.0	20.0	9.0	1.00	A181FM-1214-09
12.0		14.0	20.0	12.0	1.00	A181FM-1214-12
12.0	+0.032	14.0	20.0	17.0	1.00	A181FM-1214-17
14.0	+0.102	16.0	22.0	12.0	1.00	A181FM-1416-12
14.0		16.0	22.0	17.0	1.00	A181FM-1416-17
15.0		17.0	23.0	9.0	1.00	A181FM-1517-09

d1	d1	d2	d3	b1	b2	Part No.
[mm]	Tolerance ³⁾	[mm]	d13 ³⁾	h13	h13	
15.0		17.0	23.0	12.0	1.00	A181FM-1517-12
15.0		17.0	23.0	17.0	1.00	A181FM-1517-17
16.0		18.0	24.0	12.0	1.00	A181FM-1618-12
16.0	+0.032	18.0	24.0	17.0	1.00	A181FM-1618-17
18.0	+0.102	20.0	26.0	12.0	1.00	A181FM-1820-12
18.0		20.0	26.0	17.0	1.00	A181FM-1820-17
18.0		20.0	26.0	22.0	1.00	A181FM-1820-22
20.0		23.0	30.0	11.5	1.50	A181FM-2023-11
20.0		23.0	30.0	16.5	1.50	A181FM-2023-16
20.0		23.0	30.0	21.5	1.50	A181FM-2023-21
25.0		28.0	35.0	11.5	1.50	A181FM-2528-11
25.0		28.0	35.0	16.5	1.50	A181FM-2528-16
25.0		28.0	35.0	21.5	1.50	A181FM-2528-21
30.0	+0.040	34.0	42.0	16.0	2.00	A181FM-3034-16
30.0	+0.124	34.0	42.0	26.0	2.00	A181FM-3034-26
35.0		39.0	47.0	16.0	2.00	A181FM-3539-16
35.0		39.0	47.0	26.0	2.00	A181FM-3539-26
40.0		44.0	52.0	30.0	2.00	A181FM-4044-30
40.0		44.0	52.0	40.0	2.00	A181FM-4044-40
45.0		50.0	58.0	50.0	2.50	A181FM-4550-50

³⁾ After press-fit. Testing methods, page 57



The endurance runner at higher temperatures in the food sector Compliant with Regulation (EU) No. 10/2011 and FDA guidelines iglidur® A350



When to use it?

- When FDA compliance is required
- When wear resistance and FDA-compliance are necessary at high loads
- When the bearing is used in acid environments



When not to use?

- When continuous operating temperatures are higher than +180°C
iglidur® A500
- When the maximum wear resistance is necessary
iglidur® J
- When a cost-effective FDA-compliant plain bearing is required
iglidur® A200, iglidur® A180
- For high speeds
iglidur® J