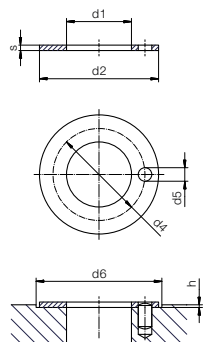


Bearing technology | Plain bearing | iglidur® Q

Thrust washer (form T)



i Dimensions according to ISO 3547-1 and special dimensions

i Order example: **QTM-2842-015** – no minimum order quantity.
Q iglidur® material T Thrust washer M Metric 28 Inner Ø d1 42 Outer Ø d2 015 Thickness s

d1	d2	d4	d5	h	d6	s	Part No.
+0.25	-0.25	-0.12 +0.12	+0.375 +0.125	+0.2/-0.2	+0.12	-0.05	
[mm]	[mm]	[mm]	[mm]	[mm]	[mm]	[mm]	
28	42	35	4	1	42	1.5	QTM-2842-015
32	54	⁴⁾	4	1	54	1.5	QTM-3254-015

⁴⁾ Design without fixing hole

🚚 Available from stock
Detailed information about delivery time online.
www.igus.eu/24

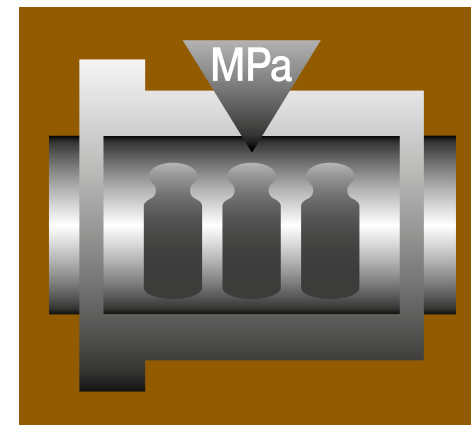
🖱️ Online ordering
Including delivery times, prices, online tools
www.igus.eu/Q

🛒 Ordering note
Our prices are scaled according to order quantities, current prices can be found online.

Discount scaling		
1 – 9	50 – 99	500 – 999
10 – 24	100 – 199	1,000 – 2,499
25 – 49	200 – 499	2,500 – 4,999

No minimum order value.
No low-quantity surcharges.
Free shipping within Germany for orders above €150.

466 3D CAD, finder and service life calculation ... www.igus.eu/Q



Heavy-duty on soft shafts For medium to high loads, especially on soft shafts iglidur® Q290



When to use it?

- When a long-lasting plain bearing is required for tough operating conditions (agricultural equipment, construction machinery, etc.) with medium to high dynamic loads on "soft" shafts



When not to use?

- When permanent static loads higher than 55MPa occur
iglidur® G, iglidur® Q, iglidur® Q2
- When an very wear-resistant plain bearing is required on "soft" shafts for minor loads
iglidur® J, iglidur® J3
- When continuous operating temperatures are higher than +140°C
iglidur® J350, iglidur® Z