

High pressure tank cleaning machine  
PressureClean  
Series 5TP



Features:

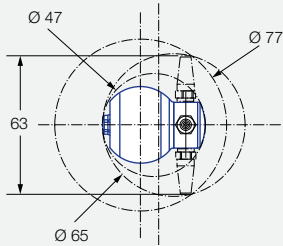
- Intensive cleaning with little water and high pressure
- Ideal for small tanks with the most persistent soiling
- Driven by an efficient 24 V motor
- “IP 65” certified motor housing
- Scope of delivery:
  - PressureClean
  - 5 m cable with matching plug and open cable end
  - Not included: power supply unit for power supply with 24 VDC/1.1 A



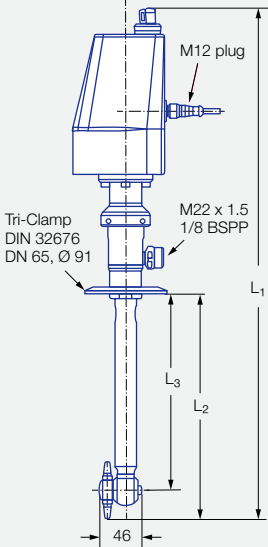
Function video  
[www.lechler.com/de-en/medialibrary/videos-general-industry](http://www.lechler.com/de-en/medialibrary/videos-general-industry)  
Or scan the QR code.

Series 5TP

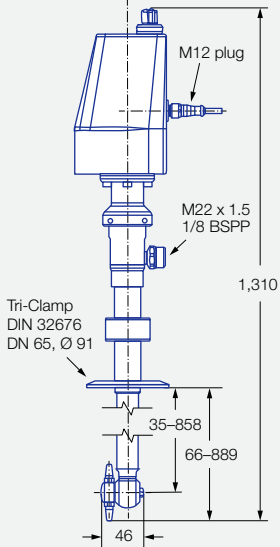
Type	Dimensions [mm]		
	L <sub>1</sub>	L <sub>2</sub>	L <sub>3</sub>
5TP.xx9.1Y.01	566	250	219
5TP.xx9.1Y.02	816	500	469



Insertion diameter and interference circle diameter



5TP.xx9.1Y.01  
5TP.xx9.1Y.02



5TP.xx9.1Y.03

Technical data:



Maximum operating temperature  
90 °C



Maximum ambient temperature  
50 °C



Installation  
Operation in every installation position



Bearing  
Ball bearing



Material  
Process side:  
Stainless steel 316L,  
PTFE with carbon,  
PEEK, Si<sub>3</sub>N<sub>4</sub>, EPDM



Weight  
2.9–5.3 kg



Surface quality  
Ra ≤ 1.6 µm



Surface quality  
Ra ≤ 6.3 µm



Steam suitability  
Not suitable



Insertion diameter  
65 mm



Recommended filter  
Line strainer with a mesh size of 0.2 mm/170 mesh



Recommended operating pressure  
100 bar



Rotation monitoring  
Sensor-compatible, information: see pages 100–101



Maintainable

Dimensions in mm.

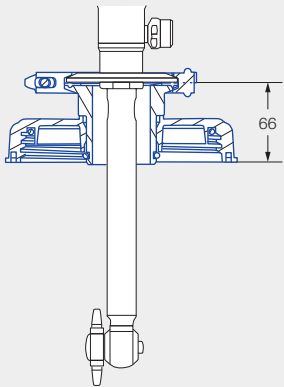
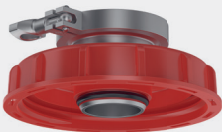


**Max. tank diameter**  
The specified maximum tank diameter applies to the recommended operating pressure and is indicative only. The type of soiling is also decisive for the cleaning result.

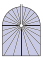
Type	Max. tank diameter for most persistent soiling [m]	Max. tank diameter for medium soiling [m]
5TP.469.1Y	1.0	2.5
5TP.589.1Y	1.2	3.0
5TP.659.1Y	1.4	3.5

Adapter for IBC containers:

- Suitable for all types of PressureClean
- Fits into a G 2 female thread
- Scope of delivery:
  - Adapter with Tri-Clamp as interface for PressureClean
  - IBC cover (DN 150, thread S165 x 7) made of HDPE
  - Stainless steel joint clamp with EPDM seal



Order no.: 05T.P30.00.00.00

Spray angle	Order no.				V̇ water [l/min]		
	Type	Lance length			p [bar] (p <sub>max</sub> = 200 bar)		
		250 [mm]	500 [mm]	1,000 [mm] with adjustable flange	50	100	150
<div>360° </div>	5TP.469.1Y	01	02	03	7	10	12
	5TP.589.1Y	01	02	03	14	20	24
	5TP.659.1Y	01	02	03	21	30	37

Information on operation

- The electric motor may only be switched on when liquid is flowing through the nozzle.

Ordering	Type	+	Lance length	=	Order no.
example:	5TP.469.1Y	+	01	=	5TP.469.1Y.01

