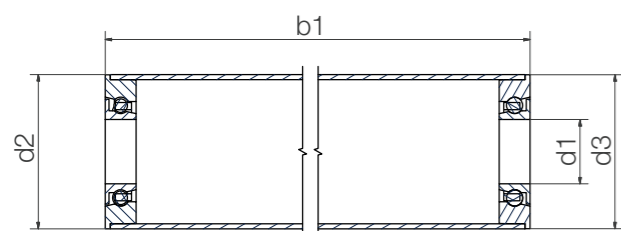




Aluminium tube with xirodur® B180 ball bearing

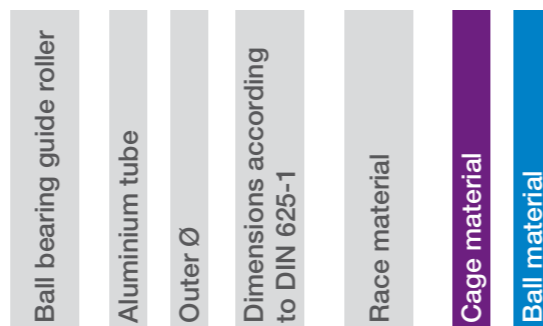
- Suitable for contact with food



Order key

Type Material

BBT-AC 38-6000-B180-10-ES



- i** Radial deep groove ball bearings with flange also available as individual parts
▶Page 910
- Cage material**
10 = PA
30 = xirodur® B180
- Ball material**
ES = Stainless steel

Dimensions [mm]

Inner Ø d1	Outer Ø d2	Flange Ø d3	Length b1	Part No.
6	20	19.9	50–500	BBT-AC20-606-B180-30-ES New
8	20	19.9	50–500	BBT-AC20-688-B180-30-ES New
8	30	29.9	50–1,500	BBT-AC30-608-B180-10-ES
10	30	29.9	50–1,500	BBT-AC30-6000-B180-10-ES
12	30	29.9	50–1,500	BBT-AC30-6001-B180-10-ES
10	38	37.9	50–1,500	BBT-AC38-6000-B180-10-ES
12	38	37.9	50–1,500	BBT-AC38-6001-B180-10-ES
15	38	37.9	50–1,500	BBT-AC38-6002-B180-10-ES
17	38	37.9	50–1,500	BBT-AC38-6003-B180-10-ES
20	50	49.9	50–1,500	BBT-AC50-6004-B180-30-ES
20	60	59.9	50–1,500	BBT-AC60-6004-B180-30-ES



Online configurator for xiros® system solutions

▶ www.igus.eu/xirosAlu



Order example:

BBT-AC38-6000-B180-10-ES, L=500mm = Aluminium tube with 2 ball bearings with race material xirodur® B180, PA cage and stainless steel balls, total length 500mm



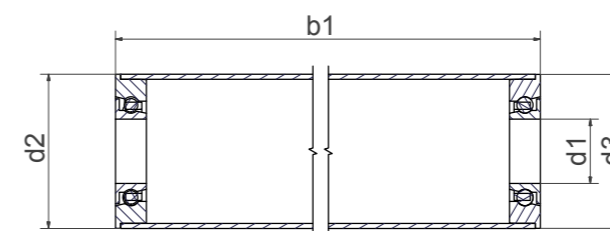
Available from stock

912 Online tools and more information ▶ www.igus.eu/xiros



PVC tube with xirodur® B180 ball bearing

- Components for use in food in accordance with 10/2011/EU and 1935/2004/EG



Order key

Type Material

BBT-PVC 50-6004-B180-30-ES



- Cage material**
30 = xirodur® B180
- Ball material**
ES = Stainless steel

Dimensions [mm]

Inner Ø d1	Outer Ø d2	Flange Ø d3	Length b1	Part No.
8	30	30	50–1,000	BBT-PVC30-608-B180-30-ES
10	30	30	50–1,000	BBT-PVC30-6000-B180-30-ES
10	40	40	50–1,000	BBT-PVC40-6000-B180-30-ES
12	40	40	50–1,000	BBT-PVC40-6001-B180-30-ES
15	40	40	50–1,000	BBT-PVC40-6002-B180-30-ES
17	40	40	50–1,000	BBT-PVC40-6003-B180-30-ES
20	50	50	50–1,000	BBT-PVC50-6004-B180-30-ES
20	63	63	50–1,000	BBT-PVC63-6004-B180-30-ES



Order example:

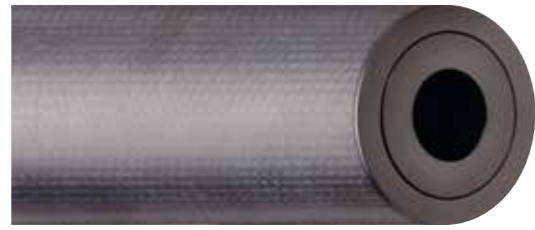
BBT-PVC50-6004-B180-30-ES, L=200mm = PVC tube with 2 ball bearings with race material xirodur® B180, xirodur® B180 cage and stainless steel balls, total length 200mm



Available from stock

3D CAD files, prices and delivery time online ▶ www.igus.eu/xiros 913

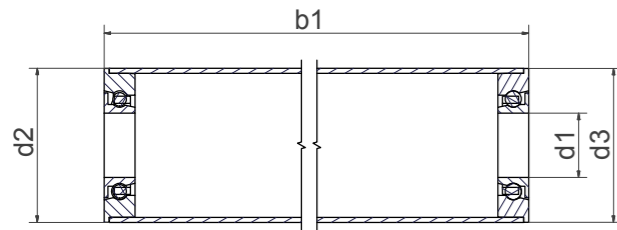




Carbon fibre tube with xirodur® S180 ball bearing, available as ESD version (with xirodur® F180 ball bearing)



Carbon fibre tube with xirodur® F180 ball bearing



Dimensions [mm]

Inner Ø	Outer Ø	Flange Ø	Length	Part No.
d1	d2	d3	b1	
20	50	49.9	50–1,000	BBT-CF50-6004-S180-30-ES
20	100	100.0	50–1,000	BBT-CF100-6004-F180-30-ES

Order key

Type Material

BBT-CF 50-6004-□-30-ES

Ball bearing guide roller	Carbon fibre tube	Outer Ø	Dimensions according to DIN 625-1	Race material	Cage material	Ball material
---------------------------	-------------------	---------	-----------------------------------	---------------	----------------------	----------------------

Cage material

30 = xirodur® B180

Ball material

ES = Stainless steel



Order example:

BBT-CF50-6004-S180-30-ES, L=200mm = Carbon fibre tube with 2 ball bearings xirodur® S180, xirodur® B180 cage and stainless steel balls, total length 200mm



Delivery time: approximately 3 weeks

With xirodur® F180 as ESD version available upon request

914 Online tools and more information ► www.igus.eu/xiros



Closed special solution with aluminium tube and polymer ball bearing for guide rollers and label rollers

Order key

Type Material

BBTG-AC 30-□-30-ES

Ball bearing guide roller	Aluminium tube	Outer Ø	Length – upon request	Cage material	Ball material
---------------------------	----------------	---------	-----------------------	----------------------	----------------------

Cage material

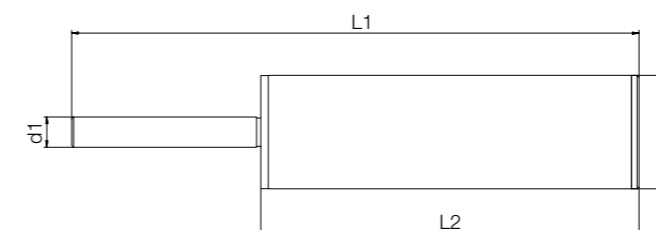
30 = xirodur® B180

Ball material

ES = Stainless steel



Ready-to-install complete systems with shaft to required size upon request



Dimensions [mm]

Outer Ø	Length	Part No.
d2	L1	
30	According to customer request	BBTG-AC30-XX-30-ES



Order example:

BBTG-AC30-200-30-ES, L=200mm = Aluminium with 2 ball bearings with race material xirodur® S180, xirodur® B180 cage and stainless steel balls, total length 200mm



Available upon request

upon request



3D CAD files, prices and delivery time online ► www.igus.eu/xiros 915



PA cage,
stainless steel or
glass balls



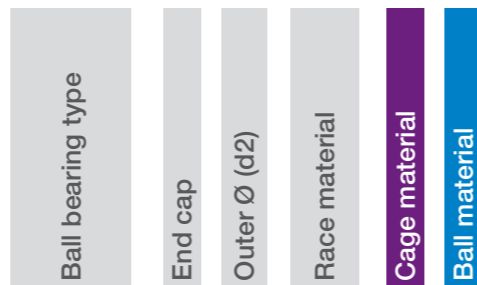
PA cage,
stainless steel balls
hexagon nut socket



Order key

Type Material

BB-6204EC44.5-B180-10-ES

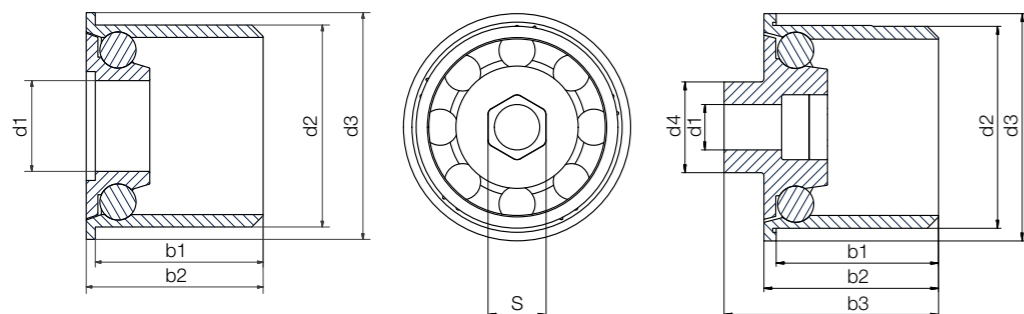


Cage material
10 = PA

Options:
Ball material
ES = Stainless steel
GL = Glass

Example "6204EC"

Example "6204ECM8"



Technical data

Installation size	Radial load capacity		Max. speed [rpm]	Weight	
	stat. [N]	dyn. [N]		PA/ES [g]	PA/GL [g]
6204	245	294	1,800	41.66	29.85
6204	245	294	1,800	48.44	-

Dimensions [mm]

Inner Ø d1	Outer Ø d2, d3		Width d4	b1	b2	b3	S	Cage/ball material combination		Part No.
	d2	d3						PA/ES	PA/GL	
20	44.5	50	-	35.8	38.5	-	-	●	●	BB-6204EC44.5-B180-10-ES
10	44.5	50	20	35.8	38.5	47.3	M8	●	-	BB-6204ECM8-B180-10-ES



Order example:
BB-6204EC44.5-B180-10-ES = End cap with race material xirodur® B180, with PA cage and stainless steel balls



Available from stock

916 Online tools and more information ► www.igus.eu/xiros

